

Welcome

Tuesday, Feb. 3, 2026

Emcee: Sonya Martinez, Communications Director



NEW MEXICO

Early Childhood

Education & Care Department

Thank you for your attention!

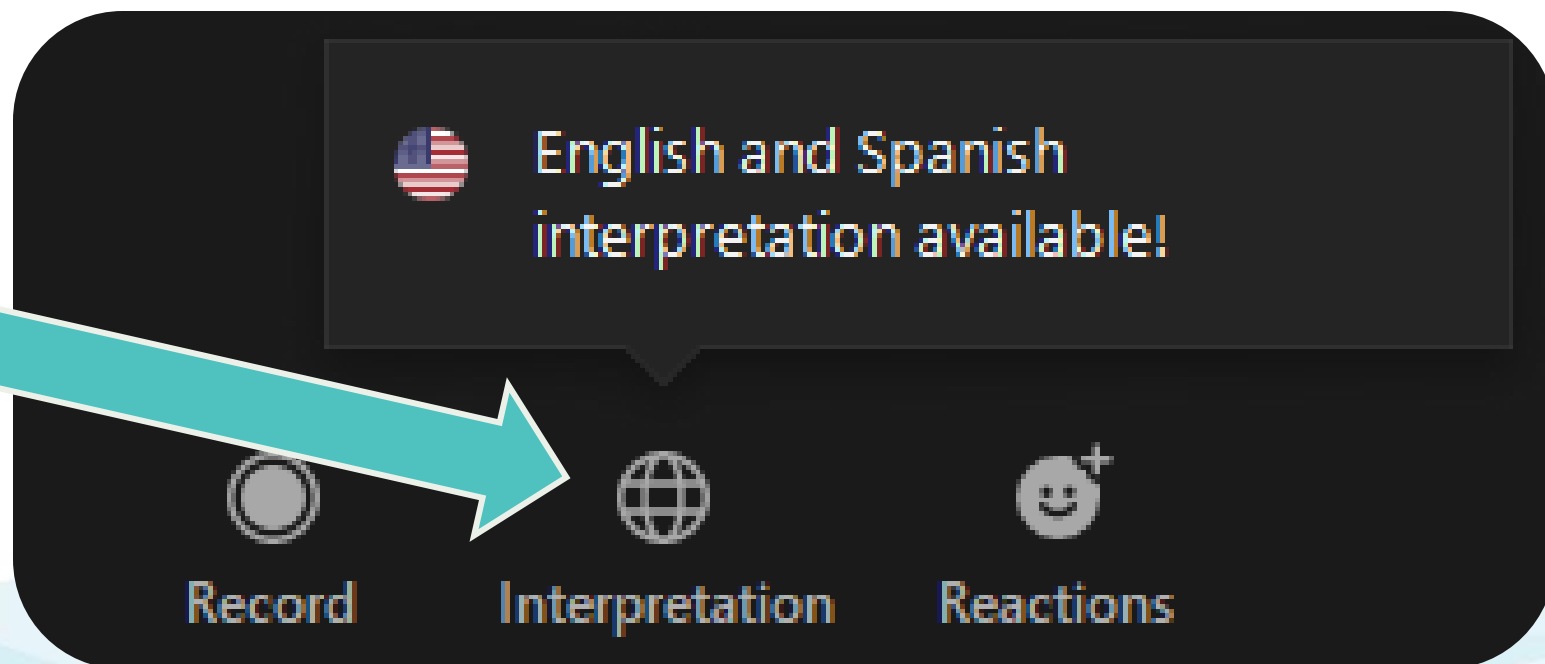
Language Instructions

Inglés > Español

Instrucciones de Interpretación

Step 1: Click the Interpretation Symbol

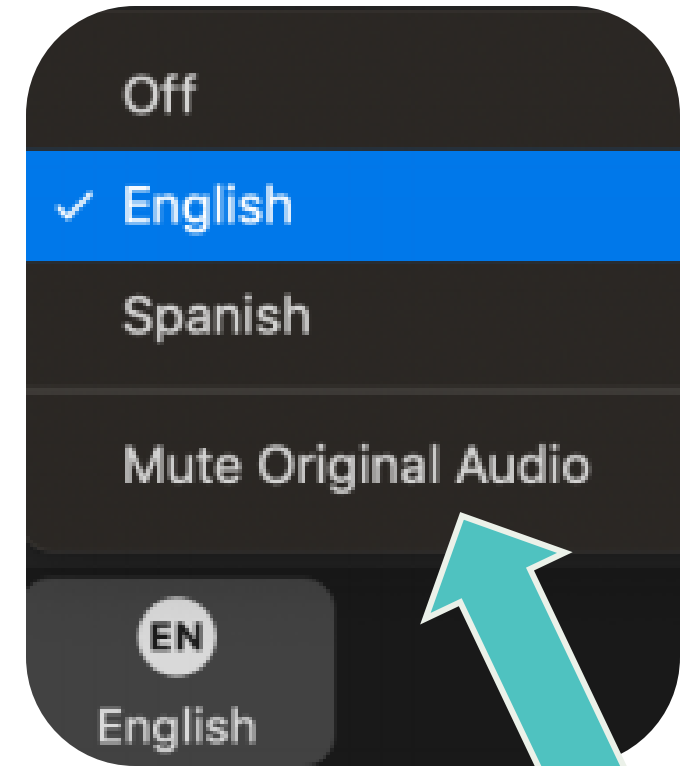
Paso 1: Selecciona el símbolo de INTERPRETACIÓN



Steps 2 and 3: Choose From the Menu

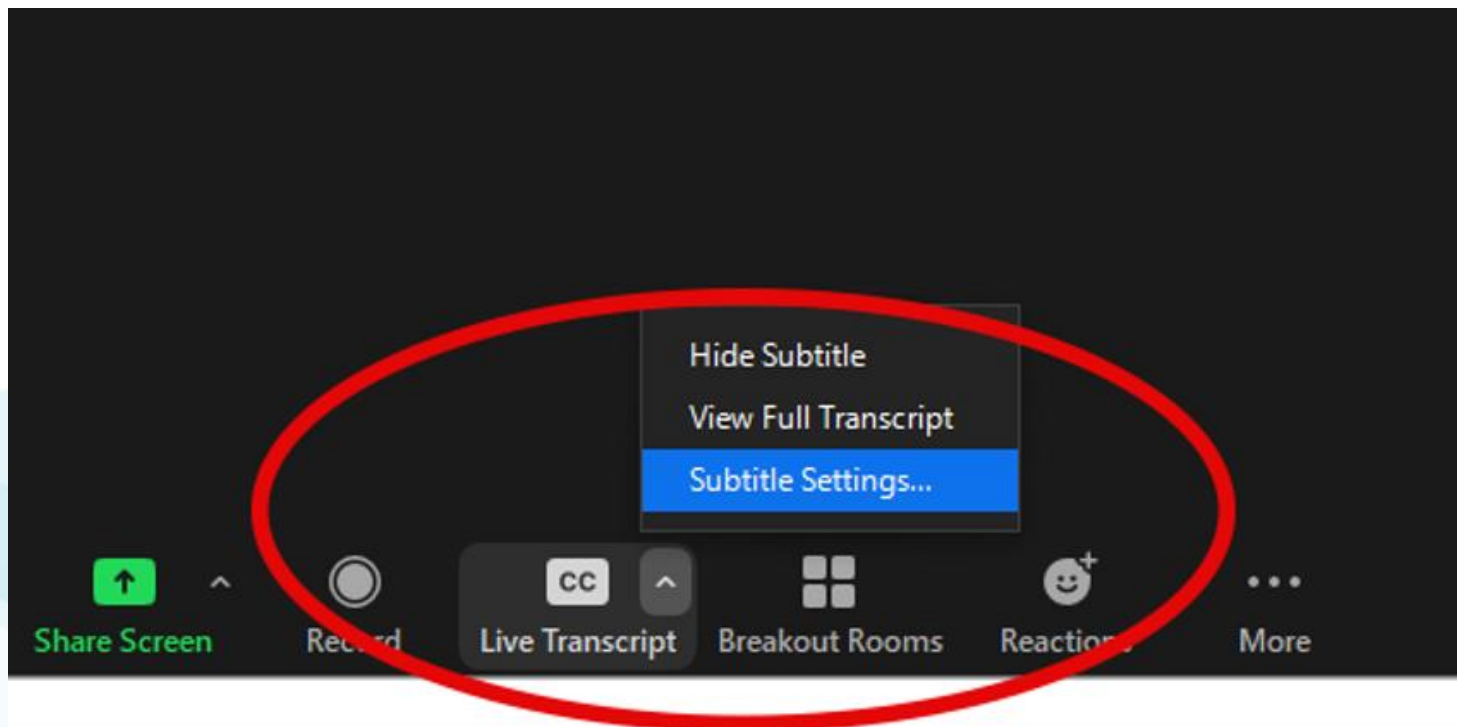
Pasos 2 y 3: Elija del menú

- You'll then see a menu; click "Spanish" OR "English"
 - **Vas a ver el menú; clic "Spanish"**
- If you would prefer to hear ONLY Spanish, also click "Mute Original Audio."
Otherwise you will hear the Spanish loud and clear and the English quietly.
 - **Si usted prefiere escuchar SOLO Español, también clic "Mute Original Audio"** De lo contrario, oirás el español alto y claro y el inglés en voz baja.
- You will now hear the Spanish interpretation.
 - **Usted escuchara ahora la interpretación en Español.**
- If you choose "English" you will automatically hear only English.
 - **Si eliges "English", automáticamente escucharás sólo inglés.**



Enable Closed Captions

- See the Show Captions or CC button in the toolbar.
- Click it and choose Show Captions to turn them on (or Hide Captions to turn off).
- You can click the small arrow next to CC/Captions to adjust caption size.



Agenda

- Welcome and Spanish Interpretation Instructions – Sonya Martinez, Communications Director
- Updates and Announcements – Sonya Martinez, Communications Director
- 2026 Family Engagement Survey – Chase Barnes, Media Desk Communications
- Rave Panic Button – Patricio Ruiloba, Strategic Account Manager, New Mexico
- Infant and Toddler Pay Parity – Nicolas Kennedy, Interim Senior Director of Programs, CNM Ingenuity
- Classroom Assessment Scoring System – Dr. Hailey Heinz, ECECD PRQI Director and Matt Owens, Vice President of Client Strategy

Updates and Announcements

A photograph of a man with a dark beard and mustache, wearing a grey button-down shirt, sitting on a light-colored couch. He is holding a baby in his arms. The baby is wearing a white patterned onesie and is holding a colorful toy. The man is looking down at the baby with a smile. The background is a bright, out-of-focus indoor setting with a window.

Sonya Martinez, Communications
Director

2026



NEW MEXICO
Early Childhood
Education & Care Department

Early Childhood Day at the Roundhouse

SAVE THE DATE

Saturday, February 14

10 a.m. to 3 p.m.

New Mexico State Capitol

Join early childhood educators, families, partners, and advocates for a day of **celebration**, **connection**, and **learning** at the New Mexico State Capitol.

More details to come.





Midway Legislative Session Check-in

Join us for a special webinar spotlighting the 2026 Legislative Session for **families** and **communities**. These webinars are designed to keep our community informed on the progress of our 2026 Legislative and Budget Priorities.

English Session
Monday, February 2, 2026
7 - 8 p.m.

Spanish Session
Tuesday, February 3, 2026
7 - 8 p.m.

Join via Zoom



Sesión Informativa: Mitad del Periodo Legislativo

Acompáñenos en un seminario web especial centrado en la Sesión Legislativa 2026 para las **familias** y **comunidades**. Estos seminarios web están diseñados para mantener a nuestra comunidad informada sobre el progreso de nuestras Prioridades Legislativas y Presupuestarias para el 2026.

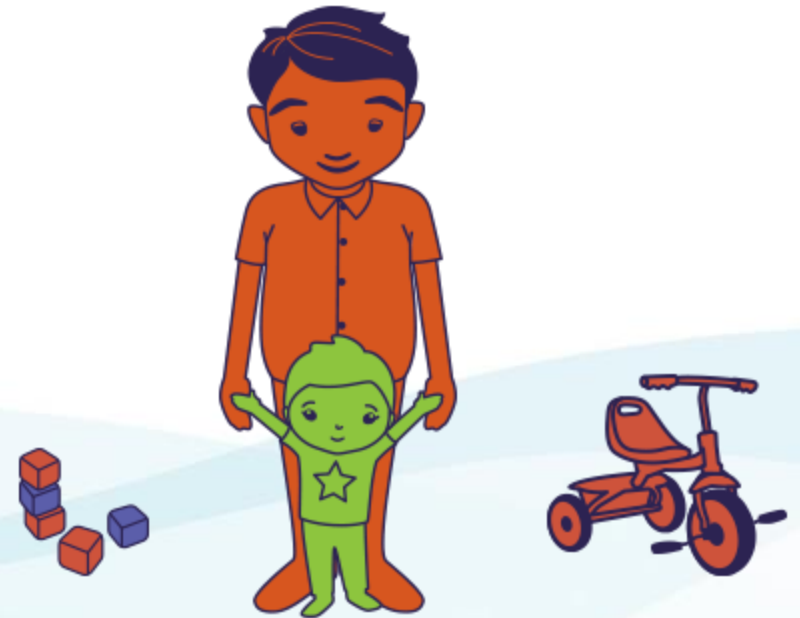
Sesión en inglés
Lunes, 2 de febrero de 2026
7 - 8 p.m.

Sesión en español
Martes, 3 de febrero de 2026
7 - 8 p.m.

Unirse a través de Zoom

FY27 New Mexico PreK Grant Opportunity *Coming Soon*

- The New Mexico Early Childhood Education and Care Department (ECECD) will soon announce grant funding opportunities for the New Mexico PreK (NM PreK) program.
- Funding details will be shared for licensed community providers, tribal programs, Head Start programs, and school-based PreK programs.
- Virtual office hours will be offered to provide an overview of the NM PreK grant opportunity and answer questions from providers.
- **Stay tuned for a special ECECD mailer with additional details, including application information and office hour dates.**



Early Childhood Education and Care Advisory Council

The next meeting is scheduled:

Wednesday, March 11, 2026 from 1 - 4 p.m.

2700 E 7th Street

Clovis, NM 88101

Zoom Link:

<https://nmececdorg.zoom.us/j/89219107988>

Meeting ID: 892 1910 7988

Learn more at nmececd.org/ecec-advisory-council



Legislative Hearings:

Public Participation Encouraged!

The New Mexico Legislature's finance committees review and make recommendations on state spending, budget priorities, and funding proposals that **shape how programs and services are delivered in communities across New Mexico.**

Senate Health and Public Affairs Committee (SHPAC)

Wednesday, Feb. 4 at 1:30 p.m.

Meetings are open to the public and available to attend or view online at www.nmlegis.gov.



*Alax, the Care Ambassador,
with Lieutenant Governor Howie Morales
during Early Childhood Day at the
Roundhouse, 2024.*

Family Engagement Survey

Chase Barnes, Media Desk
Communications Strategist



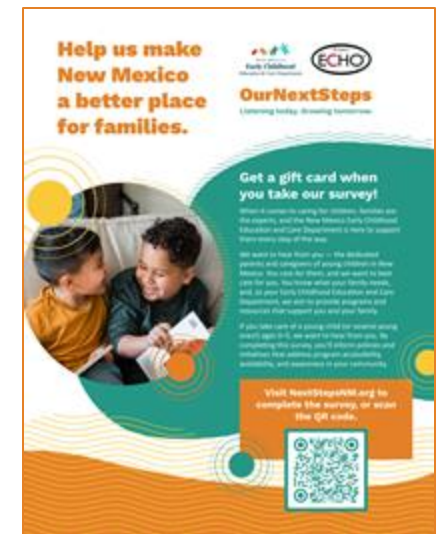
About the Family Engagement Survey

The annual Family Engagement and Satisfaction survey is a way for ECECD to hear directly from parents and caregivers.

Feedback will inform childhood programs and resources that address:

- Language accessibility, culturally diverse materials, and financial support
- Program availability in communities
- Access to programs for children with developmental delays and/or disabilities
- Overall awareness of programs

The survey is for parents and caregivers with young ones ages 0–5.



Survey Findings To Date



Facts + Stats

From our 2022 to 2025 surveys, we learned that:

- **More Families Know About Early Childhood Programs**
 - Awareness of key programs like NM PreK, FIT, and Home Visiting has climbed to **80% statewide**, meaning more families know where to go for support.
- **Child Care Services Are Making a Big Impact**
 - A record **91%** of families using child care or Child Care Assistance said these programs improved their well-being—helping families work, study, and care for their children with confidence.
- **Families Report Higher Well-Being Across All Programs**
 - An overwhelming **89%** of families said early childhood programs made life better for their household—the highest level of positive impact in four years.
- **Child Care Access Has Improved Dramatically**
 - Unmet child care needs **dropped from 32% to 12%** since 2022—one of the largest improvements in the entire early childhood system.



My Family is Part of New Mexico's Early Childhood Story

**TAKE THE SURVEY,
GET \$10**

How can you help?

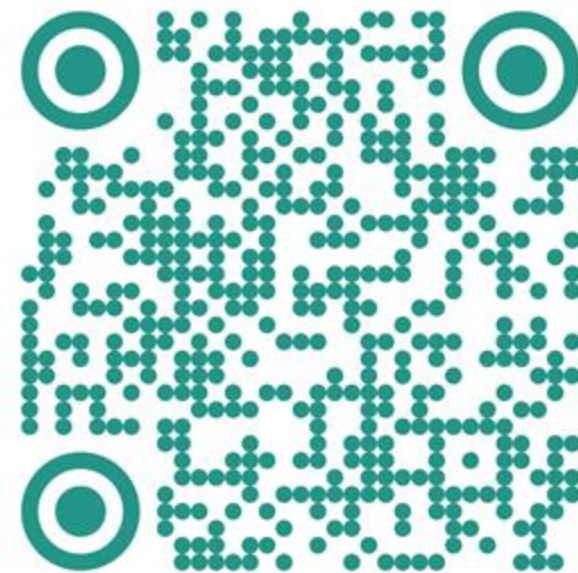
TOOLKIT

Our **Partner Toolkit** will be available on NextStepsNM.org.

There are three easy ways you can use the toolkit to help spread awareness about the survey to your community:

- Share a **social media graphic** to *social platforms*
- **Print flyers** to give to parents and caregivers
- **Email template** to add information about the survey to a newsletter or send to your email list

All materials will be available in **English** and **Spanish**.



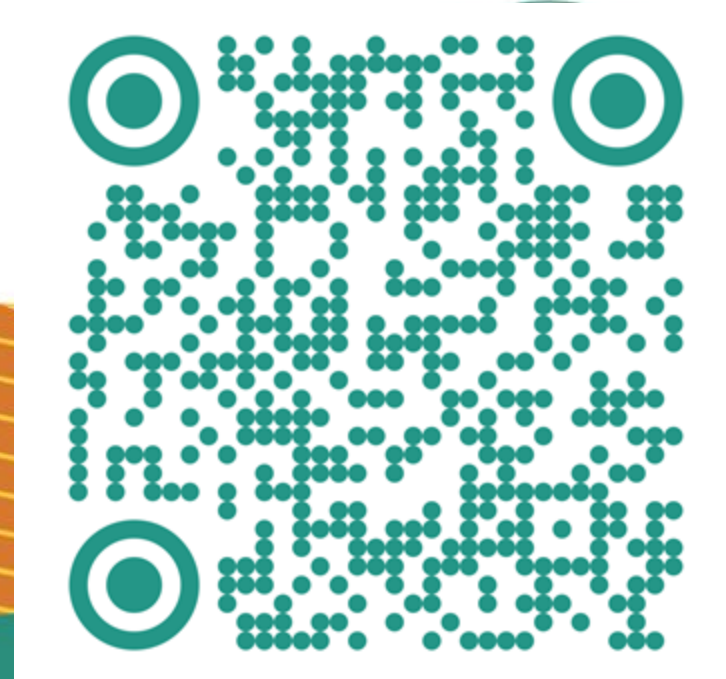
For more information, visit:

NextStepsNM.org

TOOLKIT LINK



WEBSITE LINK



Survey opens

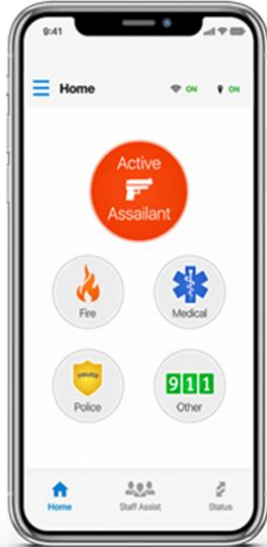
February 5, 2026



Rave Panic Button

Patricio Ruiloba, Strategic
Account Manager, New Mexico

DOWNLOAD RAVE PANIC BUTTON APP

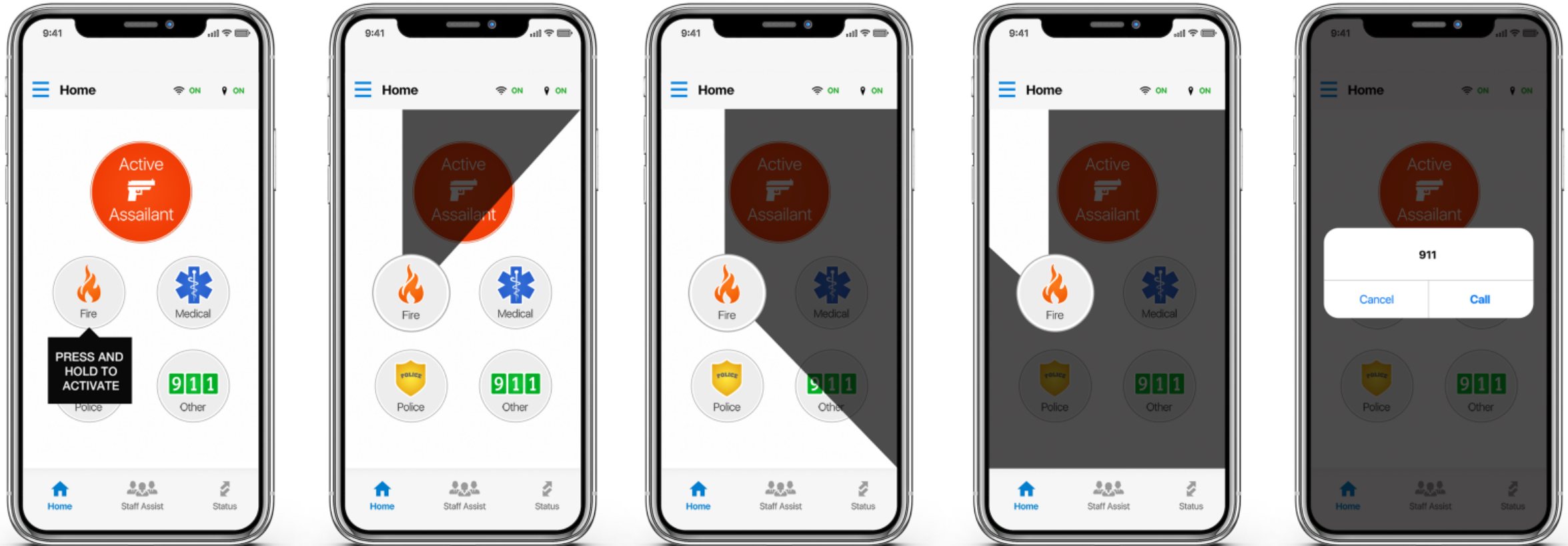


Key features and functionality to help you:

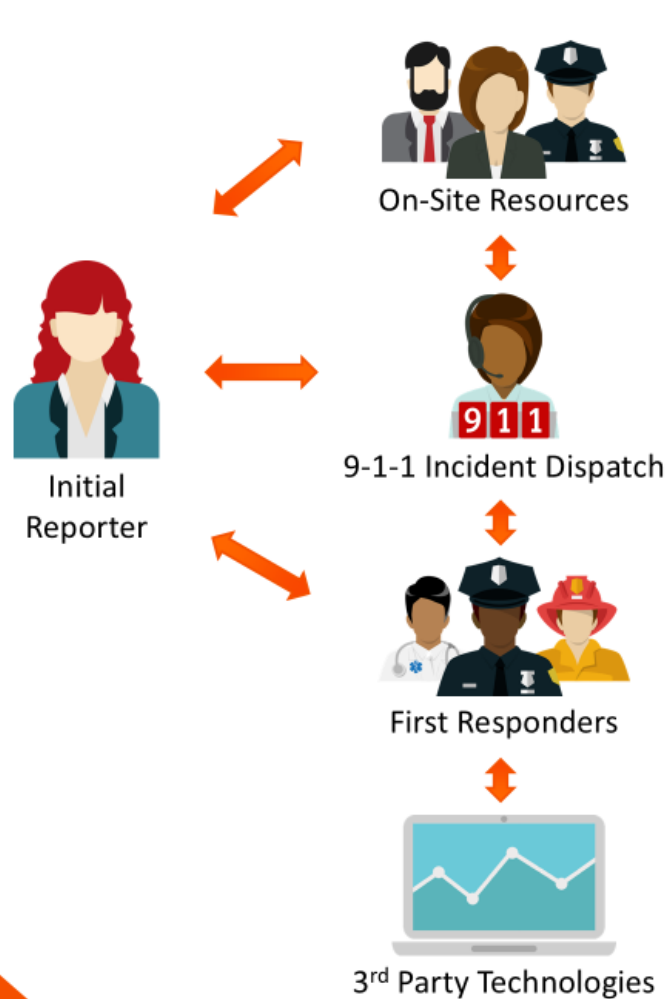
1. Inform All The Right People Instantly
2. Help Everyone Take The Right Actions
3. Bring Responders On-Scene Quicker
4. Support Technology and Agency Interoperability
5. Ensure Compliance with State Regulations

RAVE MOBILE SAFETY Do all you can today.
CONFIDENTIAL ©2020 Rave Mobile Safety All Rights Reserved.

WHEN THE PANIC BUTTON IS PUSHED....



SPEED UP COMMUNICATION & RESPONSE



69% of Active Shooter Incidents last ≤ 5 minutes

Officers arrive before the end of incident only 31% of the time

Source: FBI's *A Study of Active Shooter Incidents in the United States between 2000 and 2013*

RAVE Do all you can today.
MOBILE SAFETY

CONFIDENTIAL ©2020 Rave Mobile Safety All Rights Reserved.

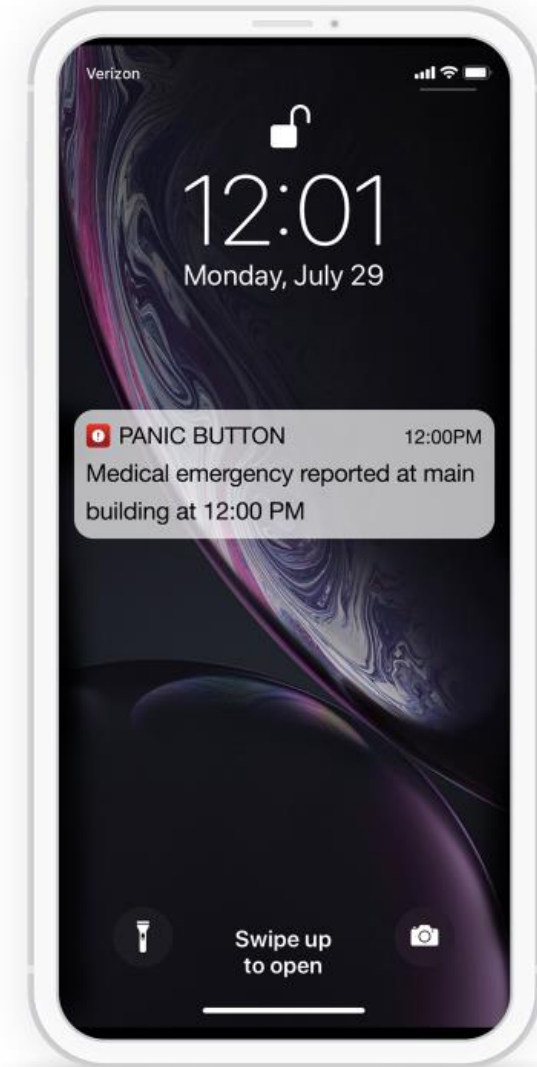
SPEED UP COMMUNICATION & RESPONSE

Receive notifications by:

- Text
- Email
- Push notification

Tells you:

- What (incident type)
- Where (campus & building location)
- Who (staff member who pushed button)
- When







TARGETED NOTIFICATIONS



Medical Emergency Configuration

Recipients

☐ All Staff  ☒ Admin  ☐ Responder  ☒ AED/CPR  ☐ COVID Response

Notification

Medical emergency reported at [campus name]/[building name] by [employee's name] at [time].



TEST - AED Map: <http://bit.ly/AED1stAid3>

14 characters left



Police Configuration

Recipients

☐ All Staff  ☒ Admin  ☒ Responder  ☐ AED/CPR  ☐ COVID Response

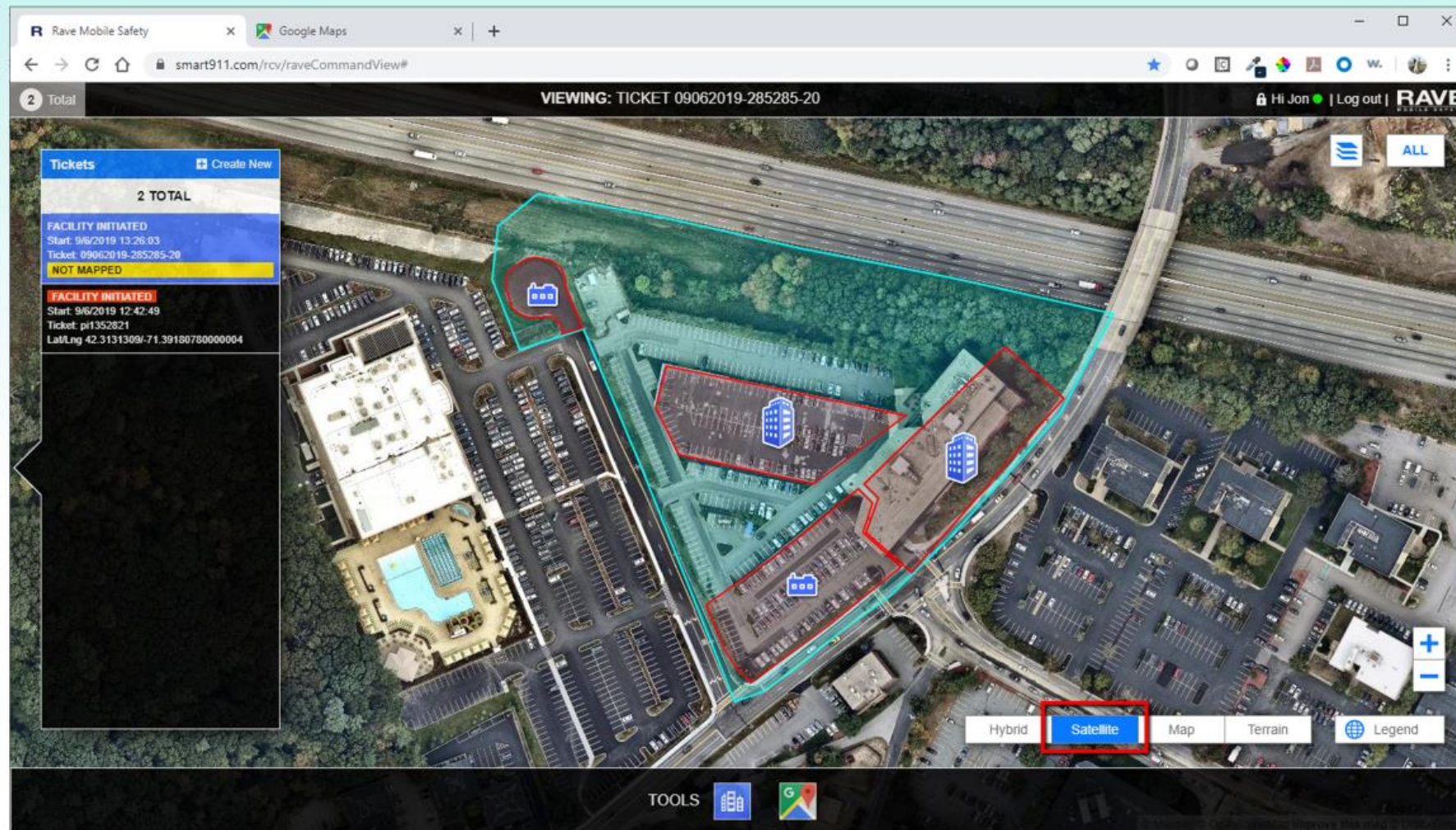
Notification

Police incident reported at [campus name]/[building name] by [employee's name] at [time].

Communicate ongoing details to principal

14 characters left

The Satellite Map View



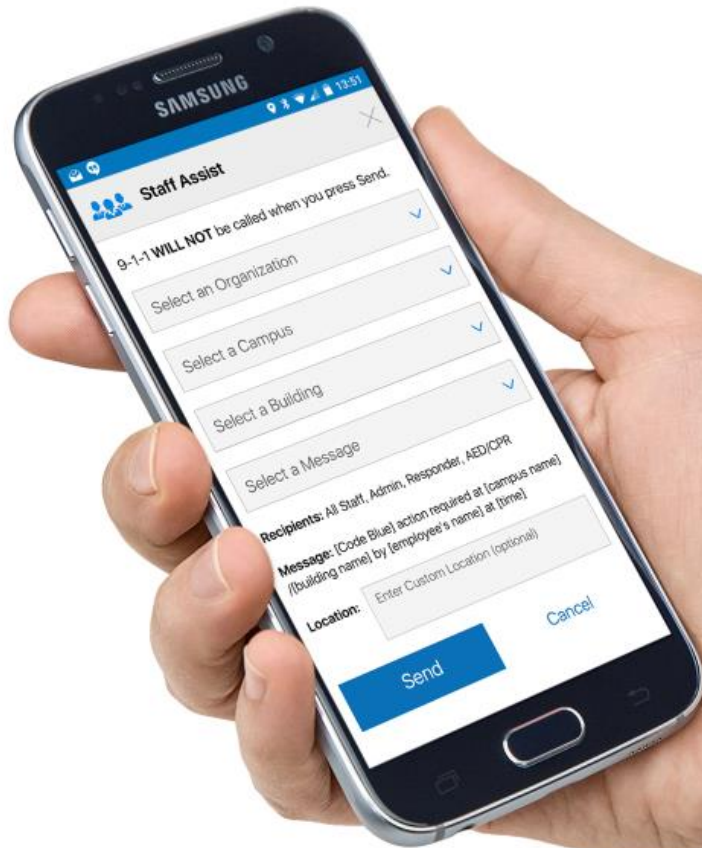
SIMPLE & SCALABLE INTERNAL COMMUNICATION

With Staff Assist, staff can send pre-set messages easily and provide updates during an emergency

10 customized pre-configured templates:

- Assistance Needed, Updates, Instructions, missing student, facility issue disturbance etc...

Designated Administrators can send ad-hoc messages in real-time



Staff Assist

RAVE
MOBILE SAFETY

Do all you can today.

CONFIDENTIAL ©2020 Rave Mobile Safety All Rights Reserved.



Infant and Toddler Pay Parity

Nicolas Kennedy, Interim
Senior Director of Programs,
CNM Ingenuity

Infant Toddler Parity

Open to educators who work in a licensed child care program and serve at least one child through the Child Care Assistance Program.

- Educators: (including home-based providers) must be assigned to a classroom that works with children ages zero, one, or two years old.
- Family child care owners: must be listed on the license and must have at least one infant or toddler at least 6-weeks – 12 months enrolled full-time in their program.
- Directors: must be listed on the license, work full-time and must supervise sites in which there is at least one infant classroom 6-weeks – 12 months. **Only one administrator per site may qualify for Parity.**



Infant Toddler Parity Categories

Category	Parity Rate	Education Requirements	Experience Requirements
Category 1	\$40,000	CDC or CDA	3+ years' experience
Category 2	\$45,000	Associate in ECE	0 - 3 years' experience
Category 3	\$50,000	Associate in ECE	3+ years' experience
Category 4	\$55,000	Bachelor's Degree in ECE	0 - 3 years' experience
Category 5	\$66,000	Bachelor's Degree in ECE OR Other Bachelor's Degree	3+ years' experience
Category 6	\$77,000	Master's Degree or higher	5 years' experience+

Parity Payments

- Applications are accepted August 15 - May 15
- Payments are issued September 15 - June 15

NOTE: Payments are disbursed over 10 months for each month that an applicant qualifies

Parity award calculation:

Parity Category Amount - Annual Salary = Total Parity Award

Total Parity Award \div 10 = Monthly Parity Payment

Example for Applicant qualified by September 15:

\$66,000 (Category 5) - \$58,000 (Annual Yearly Salary) = \$8,000

\$8,000 \div 10 = \$800 per month

Sept through June = 10 payments \times \$800 = \$8,000 total

Example for Applicant qualified by January 15:

\$66,000 (Category 5) - \$58,000 (Annual Yearly Salary) = \$8,000
\$8,000 \div 10 = \$800 per month

January through June = 6 payments \times \$800 = \$4,800 total



Additional Pay Parity Incentive



\$1,000 annual stipend incentive

Qualified Pay Parity applicants can receive an annual stipend of \$1,000 when they upload the following to their application or monthly report:

- Special Education license
- Infant Mental Health Endorsement (IECMH)
- Montessori (AMI, AMS, MACTE, IMI) Certificate

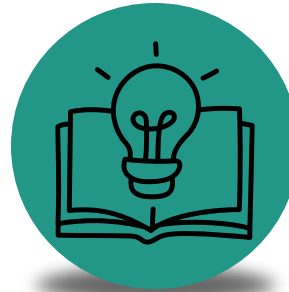
This stipend will be paid in one lump sum.

Additional Programs



Scholarship

The Scholarship program provides **100% of tuition, fees, and books** for early childhood professionals working in the field and pursuing an undergraduate certificate or degree in Early Childhood Education.



CDA Voucher

The CDA Voucher Program provides eligible early childhood educators a **payment voucher that covers the cost of their initial CDA Assessment**. The program is open to those working at least 20 hours per week with children ages 0-5 in qualifying early education settings.



Bilingual Incentive

Qualifying early childhood educators who are certified bilingual or multilingual can receive a **one-time payment of \$1,500**.

Scholarship Program



Work in a Qualified Program

- The ECECD Scholarship is open to Early Childhood educators and professionals who work **at least 20 hours per week** in a:
 - New Mexico licensed or registered childcare setting;
 - Tribal childcare;
 - New Mexico Pre-K or Early Pre-K program in a community-based setting;
 - New Mexico Pre-K or Early Pre-K program authorized by a public school or charter including Title I or 619 Preschool Program;
 - New Mexico Head Start or Early Head Start program;
 - New Mexico Tribal Head Start or Early Head Start program;
 - state-funded New Mexico Home Visiting program;
 - state-funded New Mexico Family Infant Toddler (FIT)-Early Intervention Program;
 - ECECD-funded Early Childhood Coalition programs



Enroll in a qualifying New Mexico institution of higher education



The ECECD Scholarship pays 100% of tuition, fees, and required textbooks for qualifying degrees & certificates



CDA Assessment Voucher



Work in a Qualified Program

- Early Childhood educators and professionals who work **at least 20 hours per week** in a:
 - Early care and education programs that are licensed or registered through ECECD; or
 - Tribal child care; or
 - ECECD-funded PreK and Early PreK programs in a community-based setting; or
 - NM PreK or Early PreK programs authorized by a public school or charter including Title I or 619 Preschool Programs; or
 - NM Head Start or Early Head Start programs; or
 - NM Tribal Head Start or Early Head Start programs; or
 - ECECD-funded New Mexico Home Visiting or Family Infant Toddler Programs



- Qualified applicants will be issued a voucher number to cover the cost of the assessment. We only cover the initial assessment fee.



- Once your CDA application is approved by the Council, you will receive your Ready to Schedule notice and you can schedule your CDA Verification Visit and your CDA Exam.
- You have 6 months from the time of your application to complete your test.



Bilingual Incentive Program



Work in a Qualified Program

- Early Childhood educators and professionals who work **at least 20 hours per week** in a:
 - Early care and education programs that are licensed or registered through ECECD; or
 - Tribal child care; or
 - ECECD-funded PreK and Early PreK programs in a community-based setting; or
 - NM PreK or Early PreK programs authorized by a public school or charter including Title I or 619 Preschool Programs; or
 - NM Head Start or Early Head Start programs; or
 - NM Tribal Head Start or Early Head Start programs; or
 - ECECD-funded New Mexico Home Visiting or Family Infant Toddler Programs; and
 - ECECD-funded Early Childhood Coalition



Provide verification of fluency in your **secondary** language

- Bilingual Certification documents include:
 - passed World Language PRAXIS or other Language Assessment
 - passed La Prueba
 - bilingual seal on High School Diploma
 - Tribal/Pueblo/Nation Certification for indigenous languages
 - Other document showing proficiency
- If you have a different type of certification document not listed above, contact us for help



Qualified applicants will receive a **one-time** stipend of \$1500



Infant Toddler Teacher Network



Professional development, networking, community, and support for infant and toddler teachers across New Mexico



Engage in a community of practice with other teachers who work with children from birth to 36 months of age



Attend monthly Professional Learning Community (PLC) meetings, in-person events, and professional development workshops



Earn stipends for your participation

Applications open April 1, 2026

To learn more and apply, visit ecnetworks.org





Important Information

- **Please note**: All Payment Incentives totaling \$600+ per year are TAXABLE
- Payment Incentive Programs include:
 - Pay Parity Programs
 - Bilingual Incentive Program
- You must have a W9 on file with CNM to receive your payments. The CNM Ingenuity team will contact you on the W9 submission process.

Apply Now!

For more information and links to apply for any of our programs, visit eceedscholarship.org

Programs▼	Announcements
Scholarship	
Bilingual Incentive Payment	
CDA Assessments Voucher	
Head Start Pay Parity Program	
Infant Toddler Pay Parity Program	
Pre-K Pay Parity	
Wage Supplemental Pay	
Early Childhood Networks	



PAY PARITY PROGRAMS

CNM In^genuity, Inc.

Para la aplicación en español, clic aquí o haga clic en el ícono del globo terráqueo en la esquina superior derecha para acceder a la aplicación.

For New Users:

By clicking **Sign Up**, you will be prompted to enter your email address and create a password. **Please use an email address that you can access and check regularly.** Once you have chosen your password, your account will be created and you will gain access to the scholarship application portal. **Remember to check your email account regularly for correspondence from us regarding your application.**

Sign In

Email

Password

Log In

[Forgot your password?](#)

Need an Account?

Sign Up

[Click here to apply for Infant Toddler Parity](#)

Deadlines and application windows for all programs can be found on the Announcements and Deadlines page.

Questions?

We are here to help!



powered by
CNM In^genuity, Inc.


NEW MEXICO
Early Childhood
Education & Care Department
Scholarship, Wage Supplement,
and Bilingual Incentive Programs

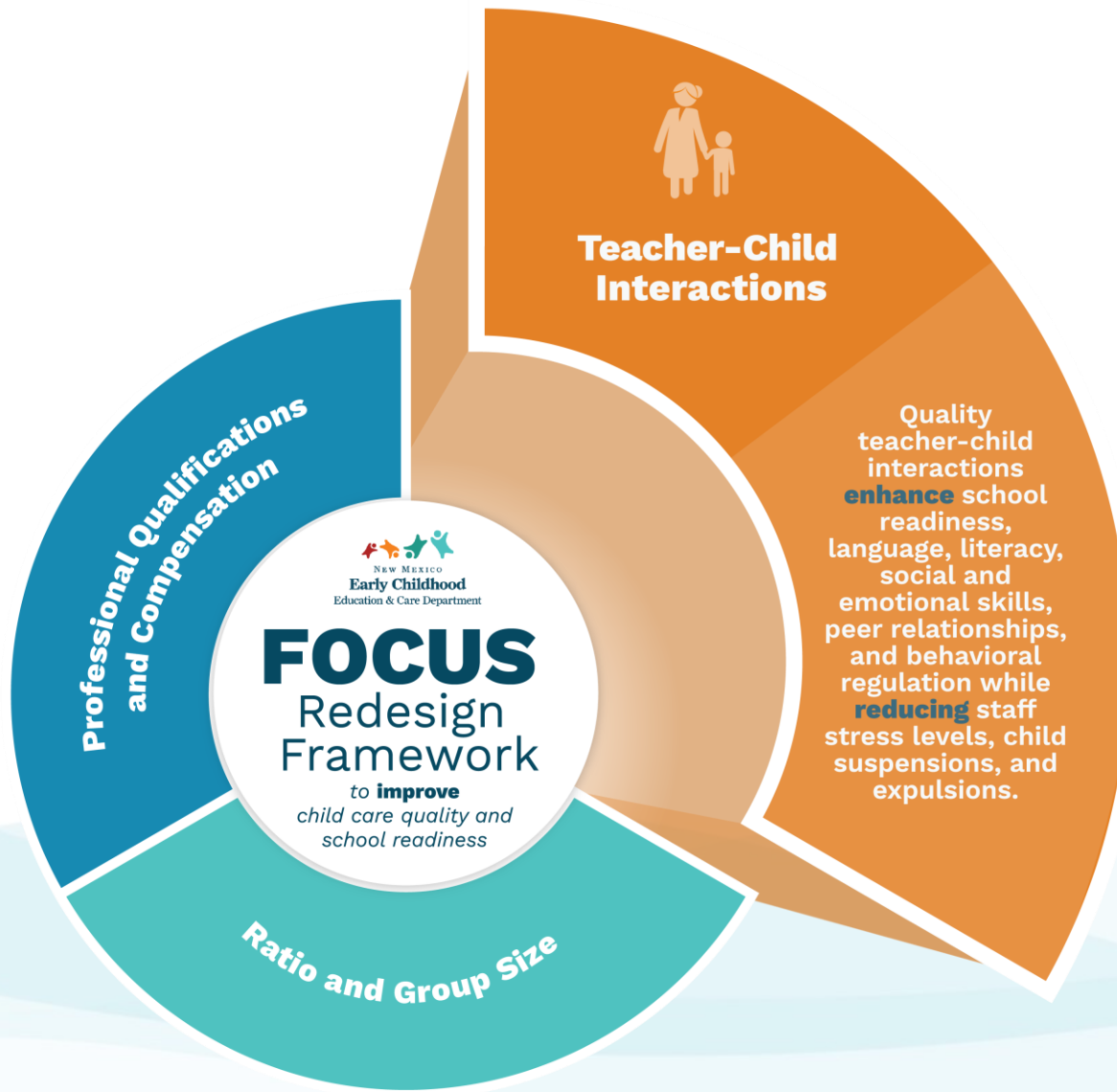


Classroom Assessment Scoring System

Dr. Hailey Heinz, ECECD PRQI
Director, *and*

Matt Owens, Vice President of
Client Strategy

FOCUS Redesign and CLASS



- CLASS will be part of a redesigned FOCUS
- Decisions about how CLASS scores will be incorporated have not yet been made
- Exploratory CLASS data collection is happening in spring 2026
- **This data collection will not affect FOCUS ratings**
- Trained observers will conduct CLASS observations in a random, representative sample of classrooms.
- The sample will be drawn from all licensed programs, including those not currently participating in FOCUS.
- If one of your classrooms is selected for a CLASS observation, you will receive more information.
- Get trained on CLASS! Register at nmels.org or eecd.org/focus-redesign

Classroom Assessment Scoring System (CLASS)

CLASS is **the most evidence-based** and **widely used** measure of **teacher-child interactions**.

Decades of research confirm that teacher-child interactions are the key factor in child care that best **predict success in school and life**.



Benefits of CLASS (1 of 2)



Children

Improved interactions with adults, which result in:

- + Improved experiences day-to-day, moment-to-moment
- + Improved learning outcomes in school
- + Improved outcomes in life



Educators

- + Increases connection with children
- + Reduces stress throughout the day (lowers cortisol levels)
- + Increases educators' control over the central part of their work



Families

- + Provides language to discuss interactions with educators
- + Offers concrete guidance on interactions that can be used at home

Benefits of CLASS (2 of 2)



Coaches

- + Establishes a clear framework for guidance and feedback
- + Can be used across subject areas
- + Informs coaching priorities



Directors

- + Grounds organizational focus
- + Informs organizational decision making
- + Offers a framework to model adult-adult interactions



State & Regional Leaders

- + Provides reliable information about children's experience of interactions
- + Offers ability to analyze trends across programs and schools
- + Establishes confidence that you're focusing the entire system on a key ingredient for children's learning: interactions

How to Improve Program Quality with CLASS



To improve teacher-child interactions, educational systems use CLASS to

- + establish a **focus** on interactions,
- + **measure** the quality of interactions, and
- + **improve** the quality of interactions.

Agenda

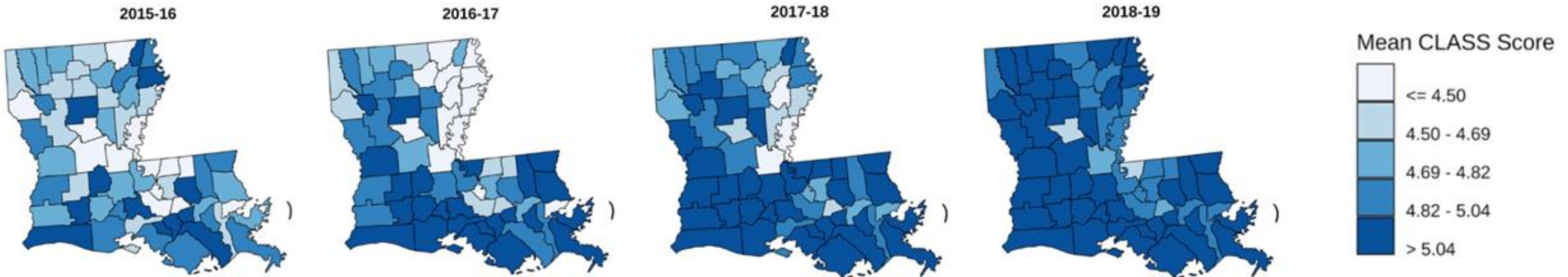
- ✓ What is CLASS?
 - What are the benefits of CLASS?
 - What does it take to improve program quality with CLASS?
- + **Where else has CLASS been used & how has it gone?**
- + What upcoming CLASS trainings are available in New Mexico?



Louisiana

In 2015–16, the Louisiana Department of Education's investment in CLASS illuminated the infrequency of high-quality teacher-child interactions.

CLASS enabled them to implement strategies that resulted in dramatic improvements. By 2018–19 nearly all regions performed in the highest quality category, represented in dark blue.

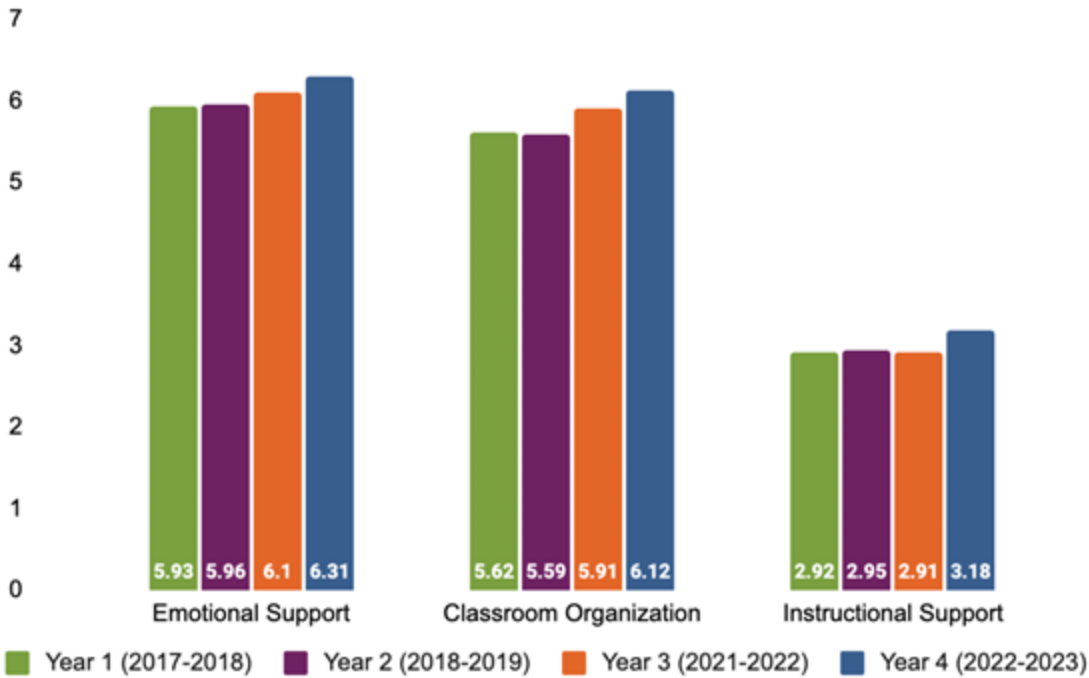


Large Urban School District

A large urban school district on the east coast invested in CLASS, starting in 2017.

Over four years, this district saw improvements in teacher-child interactions in every component of the CLASS tool.

CLASS Domain Scores Across Data Collection Period



The Pre-K CLASS tool measures three domains of teacher-child interactions. Quality in all three domains increased between 2017 and 2023 in the district. District name protected due to confidentiality.

Agenda

- ✓ What is CLASS?
 - What are the benefits of CLASS?
 - What does it take to improve program quality with CLASS?
- ✓ Where else has CLASS been used & how has it gone?
- + **What upcoming CLASS trainings are available in New Mexico?**



Overview of Upcoming Trainings in New Mexico

Intro to Interactions for Educators

- Offered in-person and virtually
- Facilitated in English or Spanish
- Available for 2nd Edition Infant-Toddler and Pre-K-3rd
- Educators will build a shared understanding of how quality interactions create meaningful learning environments, explore the CLASS observation process, and learn how to apply CLASS interactions to daily practices

Access training registration at [NMELS.org](https://nmels.org)

Overview of Upcoming Trainings in New Mexico

Custom Events

- Offered virtually; Multi-age sessions in English and Spanish
- 45 minute PD sessions designed to provide educators, coaches and program leaders with practical strategies to strengthen interactions
- Sample Topics:
 - Strategies to Support Dual Language Learners
 - Effective Interactions that Support Students with Learning Differences

Access training registration at [NMELS.org](https://nmels.org)

Next Community Call

Tuesday, March 3, 2025

Questions?

Email: ececd.communications@state.nm.us

Website: nmeccd.org

Thank you for your attention!