

ECECD Leadership Contacts



Elizabeth Groginsky

Cabinet Secretary

Email: Elizabeth.Groginsky@eecd.nm.gov

Ph: 505-827-7684



Ron Lucero

Administrative Services Division
Director

Email: ron.lucero1@eecd.nm.gov

Ph: 505-901-8207



Helen Quintana

Human Resources Director

Email: HelenT.Quintana@eecd.nm.gov

Ph: 505-660-6975



Janis Gonzales MD, MPH, FAAP

Chief Health Officer

Email: Janis.Gonzales2@eecd.nm.gov

Ph: 505-469-1742

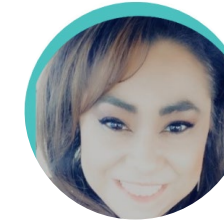


Micah McCoy

Communications Director

Email: micah.mccoy@eecd.nm.gov

Ph: 505-629-9675



Sandy Trujillo-Medina

Division Director Early Childhood Care
and Nutrition

Email:

sandy.trujillomedina@eecd.nm.gov

Ph: 505-231-3219



Mayra Gutierrez

Family Support and Early Intervention
Division Director

Email: mayra.gutierrez@eecd.nm.gov

Ph: 505- 660-7738



Sandeep Patel

Chief Information Officer

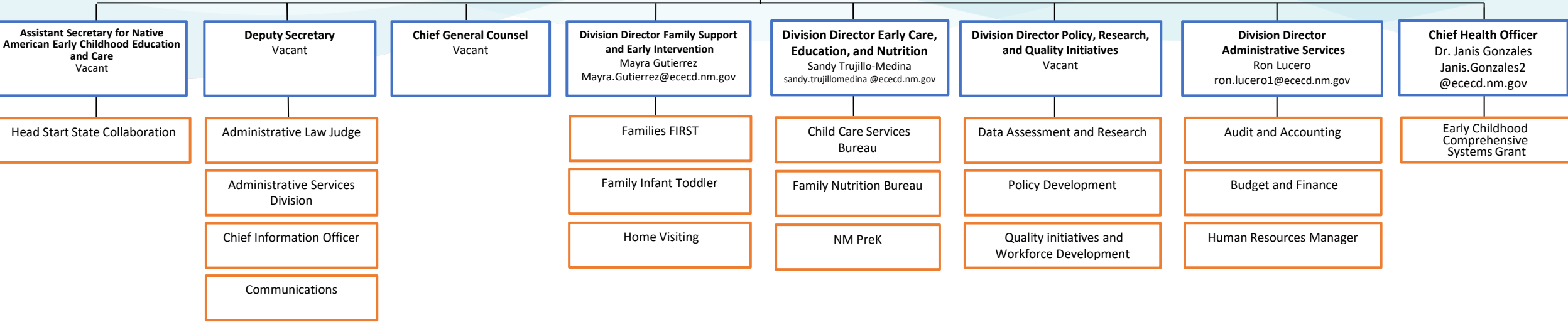
Email: sandeep.patel@eecd.nm.gov

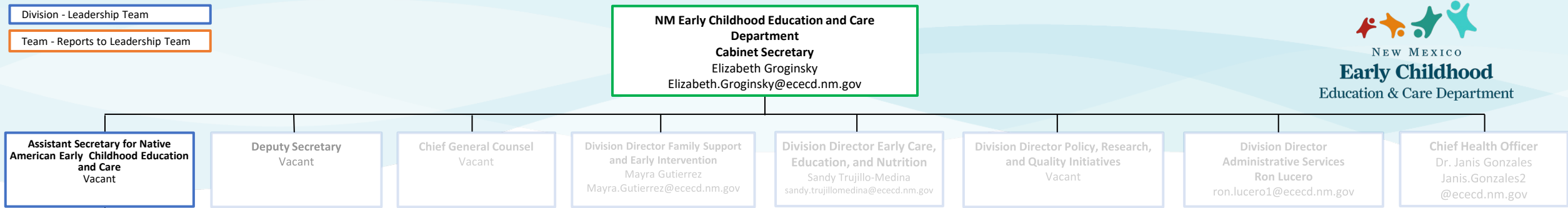
Ph: 505-660-8758

Division - Leadership Team

Team - Reports to Leadership Team

**NM Early Childhood Education and Care
Department**
Cabinet Secretary
Elizabeth Groginsky
Elizabeth.Groginsky@eecd.nm.gov



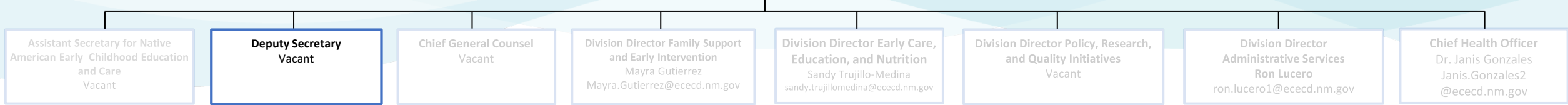


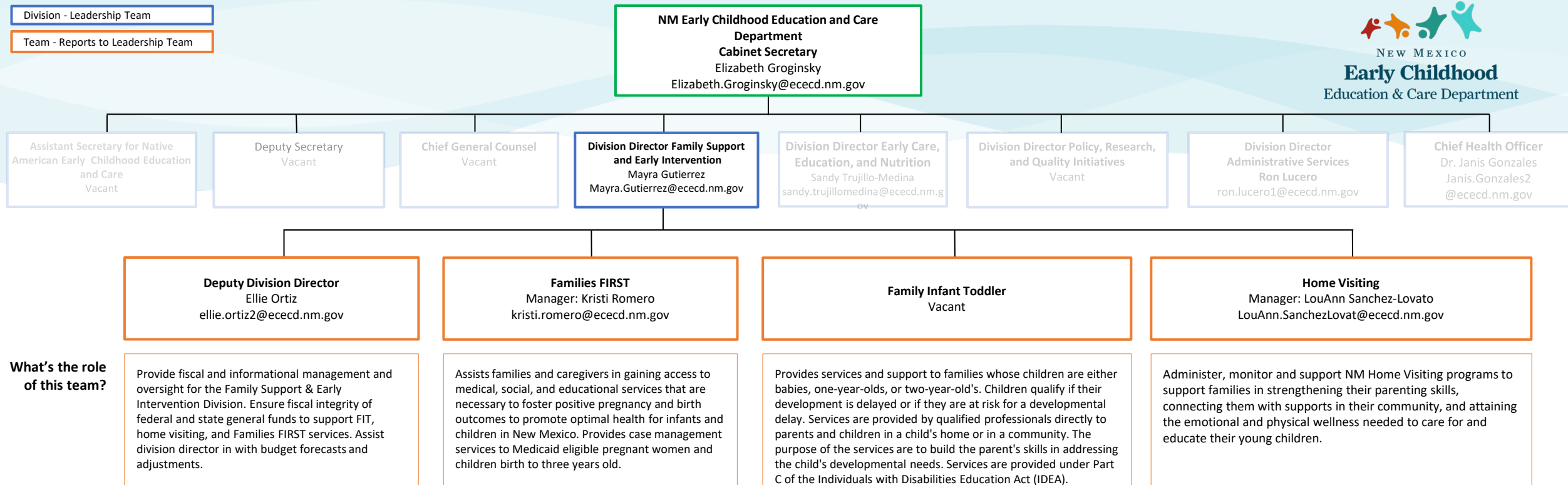
What's the role of this team?

The Head Start Collaboration Office (HSCOs) facilitates collaboration and partnerships between Head Start (tribal and non-tribal), state agencies and other state entities that provide services to benefit low-income children and their families.

- What are the key responsibilities of this team?**

- Partner with the NM Head Start Association and state child care systems emphasizing the Early Head Start-Child Care (EHS-CC) Partnership Initiative
 - Work with state efforts to collect data regarding early childhood programs and child outcomes
 - Support the expansion and access of high-quality workforce and career development opportunities for staff
 - Collaborate with State Quality Rating Improvement Systems (QRIS)
 - Work with state school systems to ensure continuity between Head Start and Kindergarten Entrance Assessment to Kindergarten Observation Tool (KOT)
 - Strengthen the workforce and requirements of degreed teachers
 - Work with tribal and non-tribal Head Start directors to support services
 - Collaborate with IDEA Part C and Part B 619 Coordinator to increase services for Head Start eligible children with special needs.
 - Coordinate professional development supports that are inclusive of language, culture, parent engagement, and leadership supporting the whole child and their continuum of educational services.





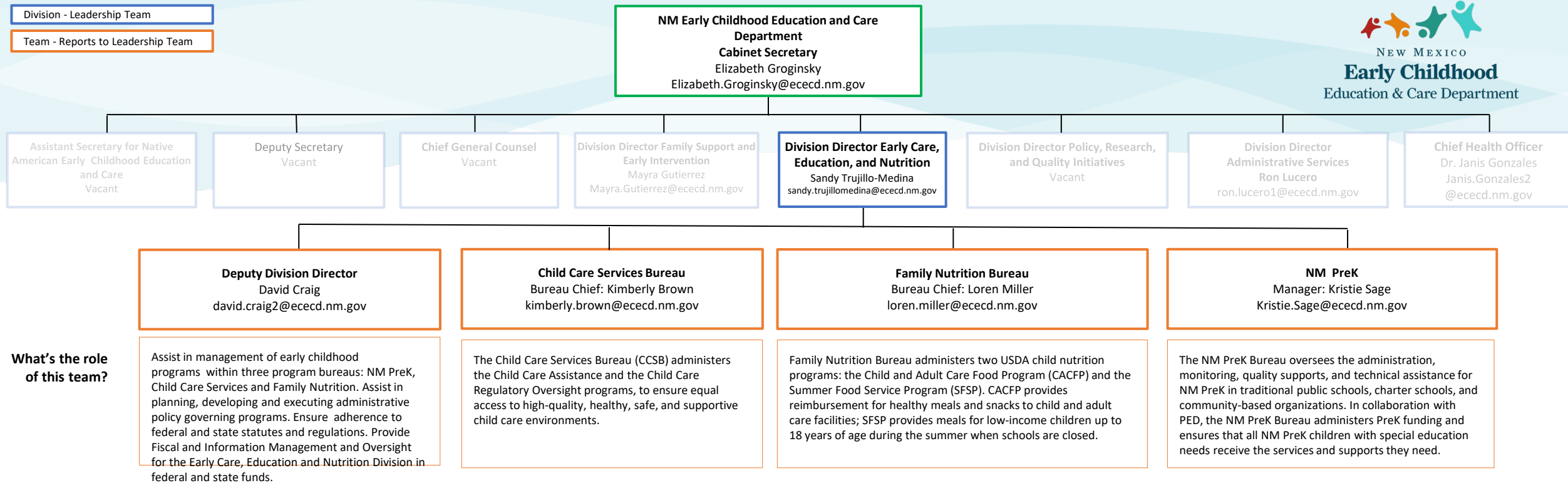
What are the key responsibilities of this team?

- Collaborate with stakeholders to help move both the FSEI and ECED priorities forward.
- Provide prudent management of the division's fiscal resources to ensure that funding is maximized and allows for the greatest impact on delivering services.
- Work in partnership with the Department, its partner agencies and stakeholder to support the mission and priorities that contribute to a seamless coherent service delivery system.

- Helping Medicaid eligible families access prenatal and pediatric care and community resources to improve early development and health outcomes.
- Increase the use of prenatal care and the early entry into care coordination.
- Improve interaction between parents'/caregivers and children.
- Improve pregnancy outcomes as evidenced by reduced low birth weight rates and infant mortality rates.
- Active participation of pregnant women in all aspects of pregnancy, prenatal care, and childbirth.
- Increase participation in Early Periodic Screening, Diagnosis, and Treatment (EPSDT) program.
- Reduced incidence of acute, chronic illness and incidence of injuries.

- Provide oversight of 34 provider agreements with local agencies that delivery FIT services to communities statewide.
- Monitor compliance with New Mexico FIT regulations, standards, and guidance and with federal IDEA regulations.
- Provide Technical Assistance to build the capacity of FIT providers to successfully use evidence-based practice
- Maintain and manage a comprehensive early intervention system.
- Attend all Interagency Coordinating Council meetings and keep the council abreast of any changes in the early intervention system.
- Oversee the system of transition out of FIT services in partnership with child care, PreK, and the PED.
- Maintain New Mexico's early intervention data via the FITkids data system
- Provide reporting to the federal Office of Special Education (OSEP) on program performance, program data, and child outcomes.

- Provide a coordinated continuum of high-quality, community-driven, culturally and linguistically appropriate home visiting services to promote maternal, infant, and early childhood health, safety, development, and strong parent-child relationships.
- Ensure program service delivery is geared toward long term outcomes.
- Provide oversight of home visiting state, federal and TANF budget allocation and financial expenditures.
- Maintain and manage a comprehensive home visiting system
- Provide oversight of home visiting contracts supporting home visiting initiatives. Such as, ongoing monitoring of contracts scope of work to ensure contractual performance and compliance. Including, guidance and oversight of the Maternal, Infant and Early Childhood Home Visiting (MIECHV) federal funded contracts.
- Ensure aggregate and program data is available through the home visiting data base system.
- Provide training and technical assistance, workforce development, and continuous quality improvement support.
- Provide support to expand home visiting and alternative methods of reimbursement (Centennial Home Visiting).



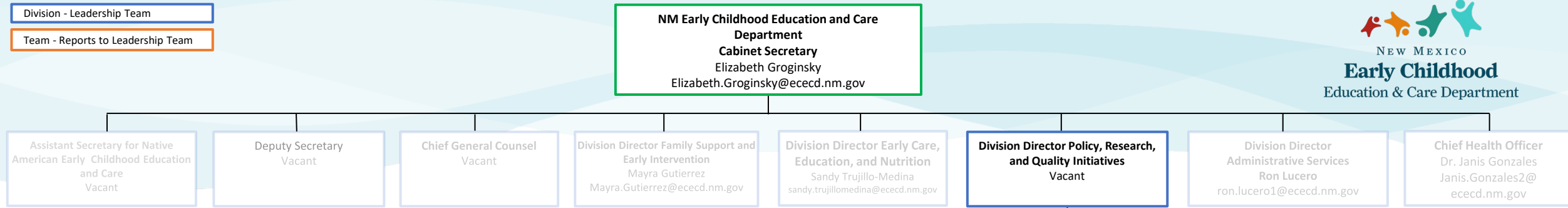
What are the key responsibilities of this team?

- Participate in the leadership and management to assure the collaborative development and successful participation of the Division with the larger ECECD structure.
- Ensure that all Division activities and projects are made in consideration of the budget and available resources.
- Analyze strengths, weaknesses and opportunities for enhancement and refinement of Division activities, including opportunities to collaborate with other Divisions to improve organizational efficiencies and service delivery to clients.
- Support the ECEN Division in the fiscal management, record keeping and reporting of the PreK, Child Care and Family Nutrition Bureaus administered by the Division. Ensuring program integrity, feedback and analysis of information related to the Division. Support the overall Department in the implementation of a seamless delivery system for early care and education.

- The Child Care Assistance Program helps parents/legal guardians who are working, going to school or in a job training program with child care expenses.
- The Regulatory Oversight Unit ensures that licensed child care centers and homes and registered homes provide a quality, safe, and healthy environment for children.
- In collaboration with other ECECD offices, the Child Care Services Bureau plans and coordinates quality child care services (including training, technical assistance, health and safety, and monitoring) and works to build child care capacity statewide.

- FNB recruits, approves, monitors and reimburses local organizations to provide eligible children in NM with nutritious meals and snacks
- FNB is responsible to administer two child nutrition programs (The Child and Adult Care Food Program and the Summer Food Service Program) in accordance with USDA regulations
- FNB provides support, training and technical assistance to eligible organizations which partner with ECECD to ensure successful operations of the two programs the Bureau administers.
- FNB provides monitoring and fiscal oversight of program operations and expenses to ensure that federal and state regulations are met and to ensure funds are appropriately expended .
- FNB ensures records are maintained to document to USDA that the program is properly administered and that funds are being dispensed to eligible organizations for eligible meals and snacks served as a part of meeting the objectives of the programs.
- FNB partners with other state and local organizations (such as HSD, DOH and PED as well as food banks, advocacy groups and similar agencies) to address hunger, access to healthy meals and similar nutrition issues in New Mexico.

- Establish program standards
- Administer a grant application process annually when new funding is available
- Ensure coaching and consultation is available to all programs
- Provide technical assistance in meeting the program standards
- Conduct ongoing monitoring and reviews of programs
- Promote collaboration between public schools, Head Start, BIE, and community-based providers.



What's the role of this team?

Data Assessment and Research works to ensure data accuracy and integrity and provides high-quality statistical reporting, analysis and research for policymakers and the public.

Policy Development works to ensure effective policies and regulations are in place to support children and families while complying with federal and state laws.

Quality Initiatives and Workforce Development oversees New Mexico's Tiered-Quality Rating and Improvement System (FOCUS), manages workforce development efforts across the early childhood field and provides support to registered home providers.

What are the key responsibilities of this team?

- Data analysis
- Data integrity
- Data requests
- Internal and external reporting
- Federal reporting
- Collaborative research (ECIDS)
- Accountability
- System assessment and development

- Family friendly policies
- Provider friendly policies
- Health and safety policies for children
- Program integrity
- Transparent process
- Accountability
- Federal and state compliance
- Public inclusiveness

- FOCUS oversight
- Planning Time Grant
- Scholarship Program
- Wage Supplement Program
- Certificates
- Equivalency Requests
- Provider Support
- Contract Management
- Pay Parity for Preschool Teachers

