

Health and Safety Requirements for Early Childhood Professionals

Janis Gonzales MD, MPH
Chief Health Officer



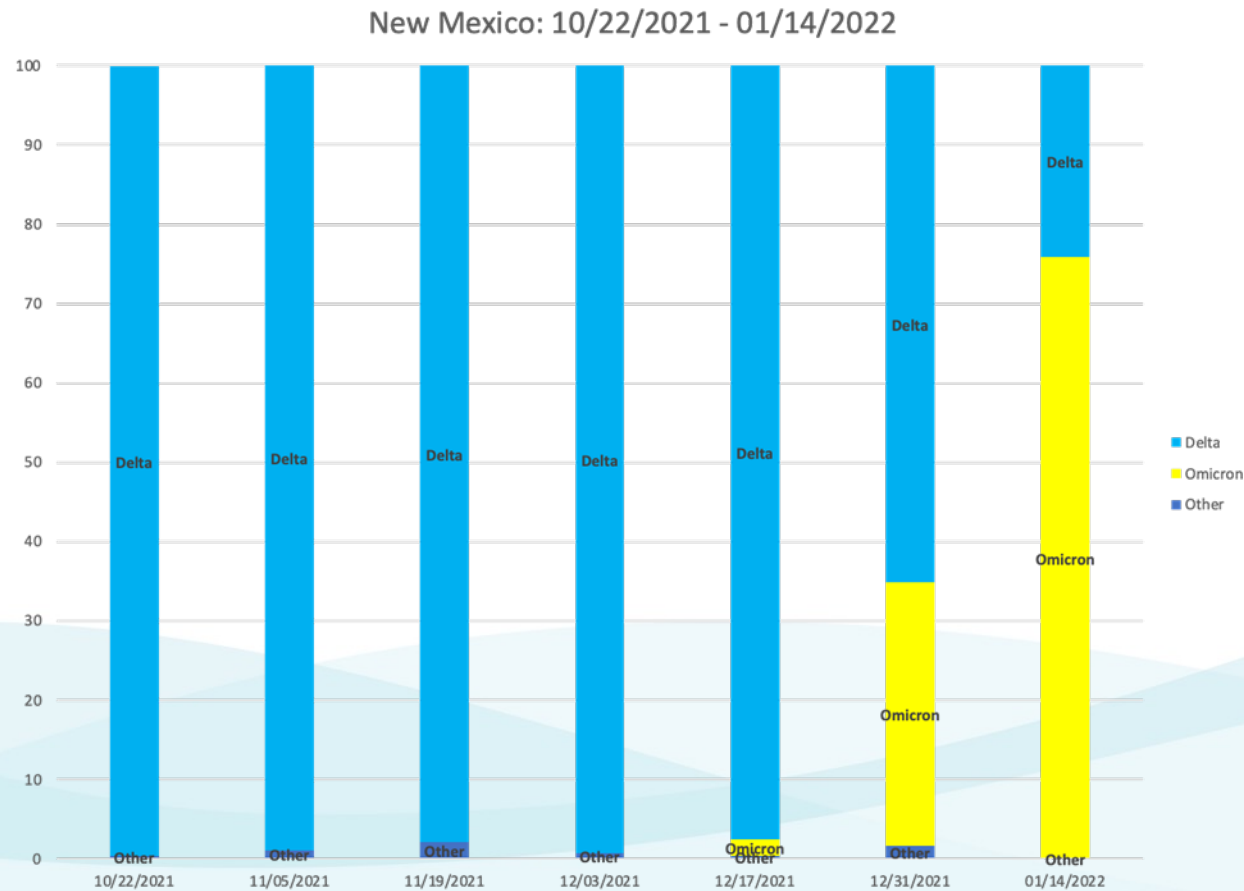
NEW MEXICO

Early Childhood

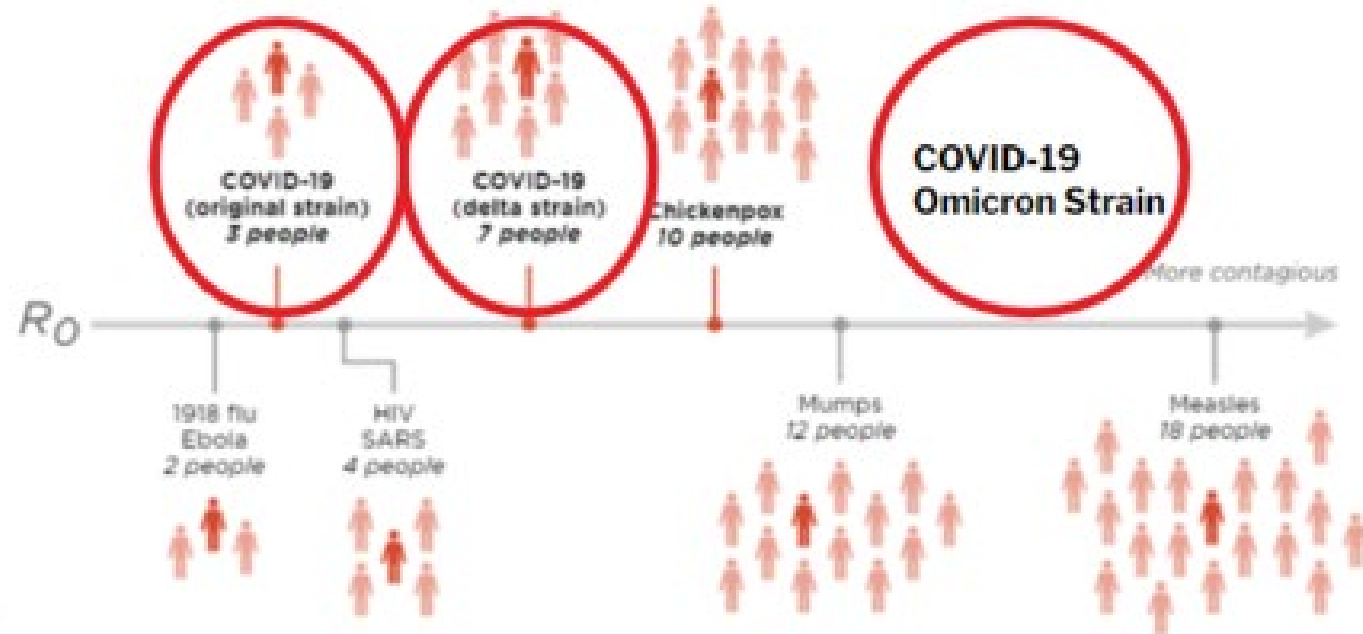
Education & Care Department

Investing for tomorrow, **delivering today**

Omicron Makes up Most of the Cases in NM



Omicron is More Infectious than Other Variants



Source: The Lancet (1918 flu, SARS), University of Michigan School of Public Health (COVID-19, ebola, measles), Johns Hopkins University School of Public Health (chickenpox), Proceedings of the National Academy of Sciences (HIV), Tom Wenseleers at the University of Leuven (COVID-19 delta variant), Australian Government Department of Health (mumps).
Credit: Michaela Doucett, Alyson Hurl and Adam Cole/NPR. Icon by Gerard Higgins/The Noun Project.



NEW MEXICO

Early Childhood

Education & Care Department

Investing for tomorrow, **delivering today**

Dose matters

- The higher dose you get of the Omicron Variant, the more likely you are to get a breakthrough case



NEW MEXICO

Early Childhood

Education & Care Department

Investing for tomorrow, **delivering today**

Why Cloth Masks Might Not Be Enough as Omicron Spreads

Time it takes to transmit an infectious dose of Covid-19

		PERSON NOT INFECTED IS WEARING			
		Nothing	Cloth mask	Surgical mask	N95
PERSON INFECTED IS WEARING	Nothing	15 min.	20 min.	30 min.	2.5 hours
	Cloth mask	20 min.	27 min.	40 min.	3.3 hours
	Surgical mask	30 min.	40 min.	1 hour	5 hours
	N95	2.5 hours	3.3 hours	5 hours	25 hours

It will take 25 hours for an infectious dose of Covid-19 to transmit between people wearing non-fit-tested N95 respirators. If they're using tightly sealed N95s—where only 1% of particles enter the facepiece—they will have 2,500 hours of protection.



NEW MEXICO

Early Childhood

Education & Care Department

Investing for tomorrow, delivering today



Layered Approach to Preventing Transmission and Protecting Children

- Masking
- Handwashing
- Social distancing
- Ventilation/air flow
- Cleaning/disinfecting
- Screening for symptoms
- Vaccinating those around them



nmececd.org/covid-19



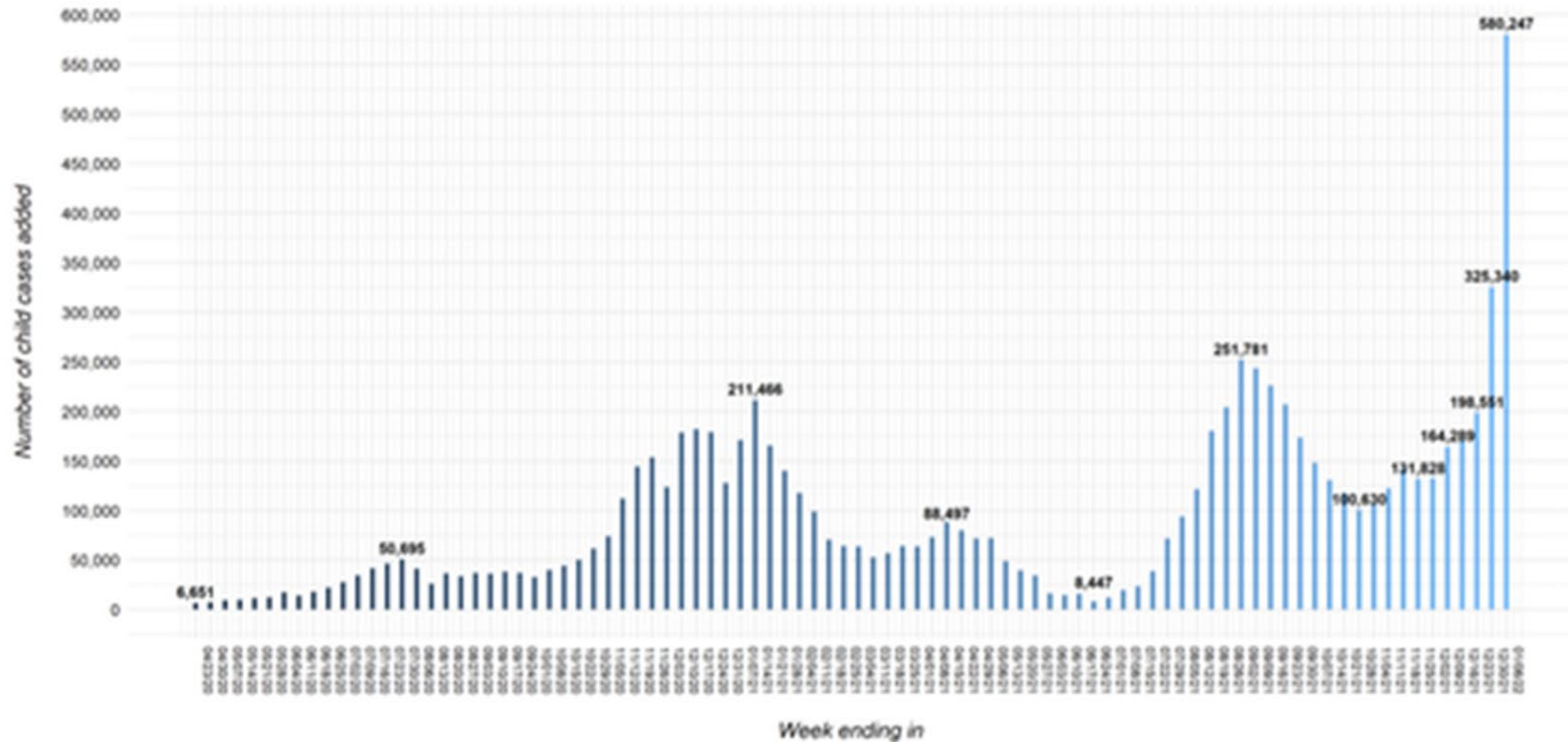
NEW MEXICO

Early Childhood

Education & Care Department

Investing for tomorrow, **delivering today**

Fig 6. United States: Number of Child COVID-19 Cases Added in Past Week*



Who Can Get a Booster Shot?

www.cdc.gov/coronavirus/2019-ncov/vaccines/booster-shot

IF YOU RECEIVED	Who should get a booster:	When to get a booster:	Which booster can you get:
Pfizer-BioNTech	Everyone 12 years and older	At least 5 months after completing your primary COVID-19 vaccination series	<ul style="list-style-type: none">• Pfizer-BioNTech or Moderna (mRNA COVID-19 vaccines) are preferred in most* situations• Teens 12–17 years old may only get a Pfizer-BioNTech COVID-19 vaccine booster
Moderna	Adults 18 years and older	At least 5 months after completing your primary COVID-19 vaccination series	Pfizer-BioNTech or Moderna (mRNA COVID-19 vaccines) are preferred in most* situations
Johnson & Johnson's Janssen*	Adults 18 years and older	At least 2 months after receiving your J&J/Janssen COVID-19 vaccination	Pfizer-BioNTech or Moderna (mRNA COVID-19 vaccines) are preferred in most* situations

Find Health and Safety Requirements Online

 **nmececd.org/covid-19**

The following is a list of **Quarantine and Isolation** health and safety practices, updated **January 12, 2022**, for all New Mexico Child Care Centers, licensed and registered homes, and early childhood professionals.



NEW MEXICO

Early Childhood

Education & Care Department

Investing for tomorrow, **delivering today**

Unchanged Health and Safety Requirements

Previous requirements not discussed here remain unchanged, such as:

- Providers must conduct daily wellness checks on every child
- Training on COVID-safe practices is required for all staff
- Good hygiene practices are required, including frequent handwashing/sanitizing
- Frequently touched surfaces should be cleaned often throughout the day and disinfected at the end of each day.
- **Indoor mask requirements remain in effect for everyone age 2 and over.**



nmececd.org/covid-19



Unchanged Health and Safety Requirements

- **Mandatory Weekly Child Care Covid Report**
 - All New Mexico licensed and regulated child care providers are required to complete a weekly Child Care Covid Report **by 10 a.m. every Tuesday**.
 - Link to online form for weekly reporting can be found at nmececd.org/mandatory-COVID-report.
- **Mandatory report of positive cases (Rapid Response)**

 nmececd.org/covid-19



5-DAY QUARANTINE AND ISOLATION GUIDANCE

For anyone who tests positive for COVID regardless of vaccination status:

- Stay home and isolate for 5 days (minimum). Day 0 is the day of symptom onset, or the day the positive test was taken (for asymptomatic persons).
- You DO NOT need to get an additional PCR test if you have had a positive at-home rapid test. Any positive test is considered positive.
- If you have no symptoms after 5 DAYS, you can leave your house but **must wear a mask** for 5 more days (surgical grade or KN95 preferred).
- Anyone who cannot wear a mask must continue to isolate at home for ten days.
- If you have a fever, or other persistent symptoms, continue to stay home in isolation until your fever is gone for 24 hours and other symptoms are resolving.

NEW Health and Safety Requirements

5-DAY QUARANTINE AND ISOLATION GUIDANCE

For anyone who has been in close contact with someone with COVID-19 (Quarantine): These guidelines differ depending on your vaccination status.

If you are up to date on all COVID-19 vaccines that you are eligible for:

- Wear a mask around others for 10 days. Day 0 is the day of exposure; day 1 is the day after the exposure.
- Test on Day 5 if possible.
- If you develop symptoms at any time, get tested if possible and stay at home until you get your results.
- If you can't get a test, but still have symptoms, assume you are positive and follow guidelines for a COVID-positive test.



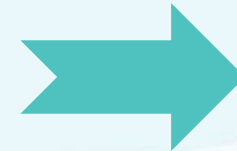
nmececd.org/covid-19

NEW Health and Safety Requirements

5-DAY QUARANTINE AND ISOLATION GUIDANCE FOR CONTACTS

If you are unvaccinated, or not up to date on all vaccinations you are eligible for:

- Stay at home and quarantine for 5 days.
- Then wear a mask around others for 5 MORE DAYS.
- Test on Day 5, if possible.
- If you develop symptoms at any time, get tested if possible and stay at home until you get your results.
- If you cannot wear a mask you must continue to quarantine for 10 days
- If you can't get a test, but still have symptoms, assume you are positive and stay home and follow guidelines for a COVID-positive test.



nmececd.org/covid-19

NEW Health and Safety Requirements

5-DAY QUARANTINE AND ISOLATION GUIDANCE

For anyone who has symptoms of COVID-19 regardless of your vaccination status:

- Get either an at-home rapid test or PCR test if possible and **stay at home until you know your test result.**
- If you test positive, follow the guidelines for a positive test result.
- If you test negative but still have symptoms, continue to stay at home and get a PCR test OR a second at-home rapid test in 1-2 days.
- If you test positive on the PCR or second at-home rapid test, follow guidelines for a COVID-positive test.
- If you can't get a test, but still have symptoms, assume you are positive and follow guidelines for a COVID-positive test.



nmececd.org/covid-19

The Federal Government Home Test Program

- Every household can order up to four at-home tests per address
- Order online beginning Jan. 19th at www.covidtests.gov
- A phone line will also be available for those without internet



NEW MEXICO

Early Childhood

Education & Care Department

Investing for tomorrow, **delivering today**

Insurance Coverage for At-Home Tests

Private Health Insurance Companies, Medicaid, and Children's Health Insurance Program (CHIP) are now required to cover the cost of at-home test kits – up to 8 per month for each insured individual



NEW MEXICO

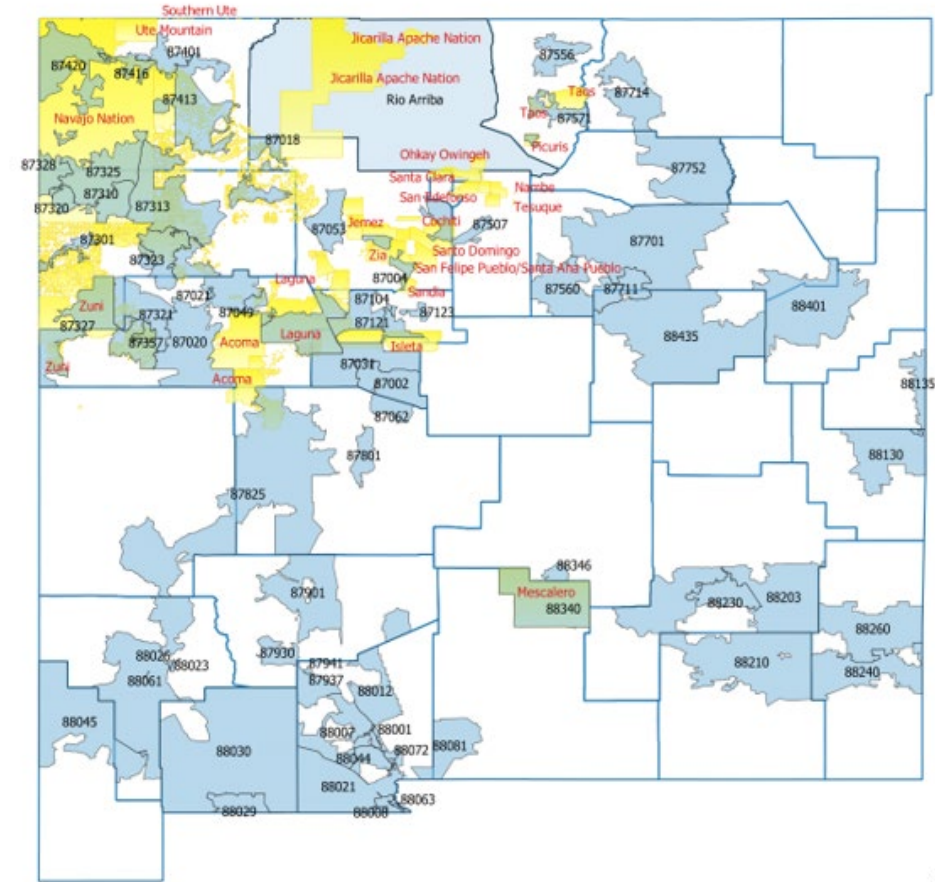
Early Childhood

Education & Care Department

Investing for tomorrow, **delivering today**

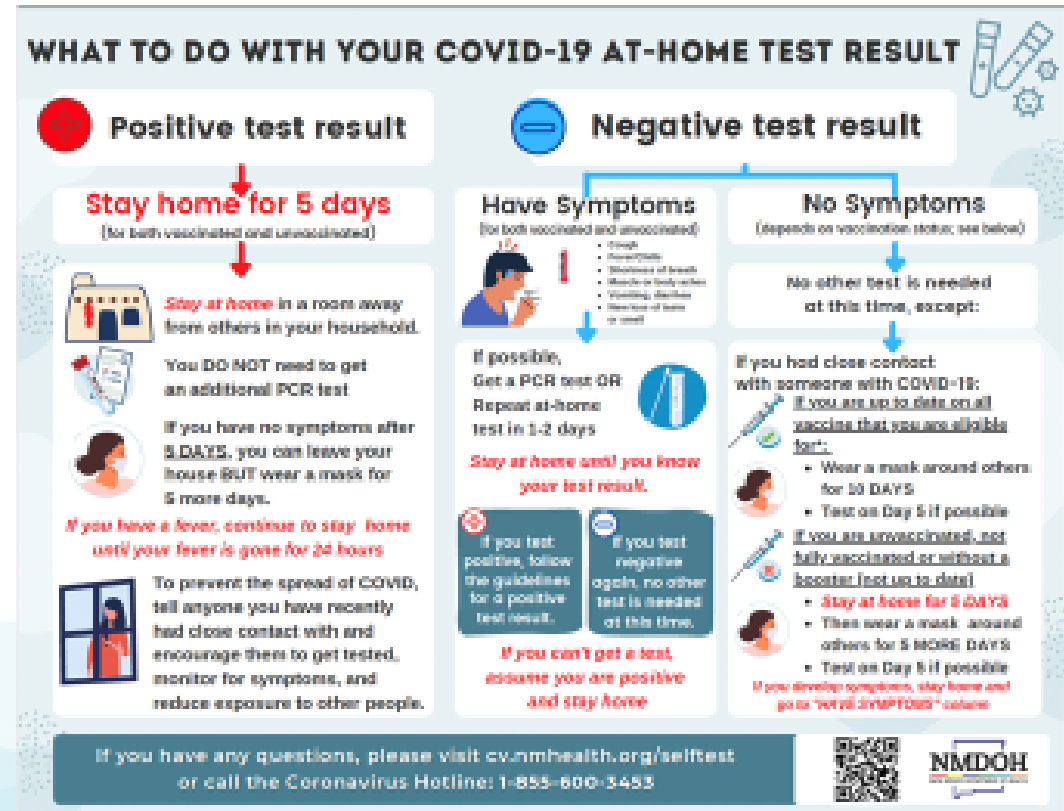
DOH is also Distributing At-Home Tests

- NMDOH identified the 79 zip codes in 26 counties with the highest social vulnerability index and high case rates.
- 11% of tests to tribal communities



Interpreting Home Test Results

- Understanding appropriate follow-up for positive and negative tests is crucial.
- Stay-at-home guidelines can be found in English and Spanish on <https://cv.nmhealth.org/selftest/>
- People receiving at-home test kits should be given either a digital or paper copy of the results guidelines.
- Reporting home test results is not required



Early Childhood

Education & Care Department

Investing for tomorrow, delivering today

Resource Reminder

Download the
Health and
Safety flyer at
nmececd.org/covid-19



Continued Health and Safety Requirements for New Mexico Child Care Facilities and Early Childhood Professionals

- If a close contact is continuously exposed (i.e., lives in the same household), the close contact

Continued Health and Safety Requirements for New Mexico Child Care Facilities and Early Childhood Professionals

- For reg

NEW MEXICO
Early Childhood
Education & Care Department

Health and Safety Requirements for New Mexico Child Care Facilities and Early Childhood Professionals

On March 11, 2020, Governor Michelle Lujan Grisham declared a public health emergency in order to maximize the resources available to fight the spread of COVID-19 and minimize public health risks for New Mexicans. The fight against COVID-19 is ongoing, fluid, and requires our collective diligence and attention. The following is a list of required health and safety practices, effective January 12, 2022, for all New Mexico Child Care Centers, licensed and registered homes, and early childhood professionals.

Required Practices

- **Parents/guardians may resume entry exclusively for the purposes of pick-up or drop-off under the following conditions:**
 - Limit entry to one parent or guardian;
 - Time spent in facility should not extend beyond that which is necessary for picking-up or dropping-off child(ren);
 - Masks are required to be worn indoors by all parents/guardians;
 - All other parental interactions with staff must remain virtual or outdoors (e.g., parent-teacher conferences, daily reports, payment processing, etc.); and
 - Ensure physical distancing is maintained
- All other access to the facility must be limited to essential visitors, which includes breast feeding mothers, parents/guardians seeking services, therapists, early interventionists and special education staff, FOCUS verifiers and FOCUS consultants, ECECD regulatory staff, and practicum students.
- Providers must conduct daily temperature checks and screenings for symptoms prior to entry for non-vaccinated staff and all other essential visitors entering the building.
- **Masks are no longer required** outdoors for staff, children, parents, and essential visitors but are recommended in public places such as parks, etc.
- **Indoor mask requirements remain in effect** for everyone age 2 and over.
- Licensed providers may operate at group sizes and ratios according to their licensed Star level
- Providers must conduct daily wellness checks on every child at the facility.
- **Masks are required indoors for all staff**, plus gloves and gowns as needed for wellness screenings of children or health screenings of staff and essential visitors.
- Masks are required for children age 2 years and older when indoors (except when drinking, eating, or napping)
- Training on COVID safe practices is required for all staff, including cooks and transportation staff.
- Good hygiene practices are required, including frequent handwashing/sanitizing
- Frequently touched surfaces should be cleaned often throughout the day and disinfected at the end of each day.
- Providers should not serve family-style meals; have employees (not children) handle utensils. Wear gloves when serving children. Plate each child's meal.
- Providers must serve meals in the classroom. If spaces such as cafeterias need to be used—as with licensed out of school time programs—stagger use and clean and sanitize between use.
- **Transportation safety requirements:**
 - Mandatory mask wearing for passengers two years of age and older.
 - Use the vehicle's vents and windows to bring in fresh air and avoid using the recirculated air option.
 - If possible, maintain one empty space between passengers.
 - Require handwashing/hand sanitizer before and after exiting the vehicle
 - Clean and sanitize regularly touched surfaces between groups/runs.
- **Requirements regarding testing for non-vaccinated staff and practicum students. conditions:**

Page 1

nmececd.org/covid-19 • Updated January 12, 2022

Thank you!

Janis Gonzales MD, MPH
Chief Health Officer, ECECD
Janis.Gonzales2@state.nm.us



Early Childhood

Education & Care Department

Investing for tomorrow, **delivering today**