

New Mexico
Juvenile Justice Services
Fiscal Year 2008
Annual Report



January 2009

State of New Mexico
CHILDREN, YOUTH AND FAMILIES DEPARTMENT

BILL RICHARDSON
GOVERNOR

DIANE DENISH
LIEUTENANT GOVERNOR



DORIAN DODSON
CABINET SECRETARY

BILL DUNBAR
DEPUTY CABINET SECRETARY

MARISOL ATKINS
DEPUTY CABINET SECRETARY

Juvenile Justice Services
Debra Pritchard

FY2008 Annual Report

Produced by

JJS Data Analysis/FACTS Bureau
Dan W. Hall, Data Manager
Fran T. Bunker, FACTS Reporting Manager

Major Contributors:
John Barela, Field Data Analyst
Jennifer Sanders, Facility Data Analyst
Judith Harmon, FFT/MST Data Analyst
Katherine Courtney, Epidemiologist

Special thanks for contributions by:
Yvonne Montford, FACTS Supervisor
Teresa Sanchez, FACTS Management Analyst
Jeremy Howard, SDM Coordinator
Patti Vowell, JDAI Analyst

Comments/Suggestions regarding this publication may be e-mailed to
JJSDataRequest@state.nm.us



Table of Contents

Juvenile Justice Facilities and Descriptions2

Juvenile Justice in New Mexico Statistics.....3

FY08 Formal Case Processing Time.....5

FY05-FY08 Formal Case Processing Time.....6

FY06-FY08 Formal Case Processing Time by Region/District.....7

Census Population: New Mexico by County: Age 10-178

Expected Change in the Juvenile Population Nationwide10

Number of Referrals and Clients Referred to JPPO11

National Juvenile Arrest Rates12

FY05-08 Number and Percent Change - Referrals by County, Region, & District.....13

FY08 Referrals by Type by Region/District/County14

FY02-FY08 Percent Change - Referrals by District.....15

FY02-FY08 Delinquent Referrals as Percentage of All Referrals, by District.....16

Clients Referred by Gender & Incident Age17

Clients Referred by Ethnicity18

FY08 Offenses Referred.....19

New Mexico Juvenile Detention Alternative Initiative (JDAI) and System Reform.....20

FY08 JPPO/Preliminary Inquiry (PI) Decisions23

FY08 JPPO Decisions for Delinquent Referrals, by Region/District.....24

FY04-FY08 Offenses Found Delinquent25

FY 05-08 Formal Dispositions26

JPPO Caseload on 6/30/08 – Predisposition and Active Supervision by Type.....29

Juvenile Commitments and Admissions.....30

Commitment Trends by Region/District/County.....**Error! Bookmark not defined.**

Facility Commitment/Admission Arrival Times**Error! Bookmark not defined.**

15-Day Diagnostic Evaluations by Region/District/County**Error! Bookmark not defined.**

FY02-FY08 Commitments by Length33

FY02-FY08 Commitments by Gender and Age34

FY02-FY08 Commitments by Ethnicity/Gang Affiliation.....35

FY02-FY08 Commitments – Technical Violation vs. Delinquent36

Risk and Needs Scores of Committed Clients at Admission ...**Error! Bookmark not defined.**

Average Daily Facility Population.....39

Average Daily Facility Population and Facility Profiles**Error! Bookmark not defined.**

Facility Programs & Services Matrix.....41

APPENDICES

Acronyms43

Common Definitions.....44

CYFD



CYFD partners with communities to strengthen families in New Mexico to be productive and self-sufficient.



CYFD believes in the strengths and resiliency of families who are our partners and for whom we advocate to enhance their safety and well-being. We respectfully serve and support children and families and supervise youth in a responsive community based system of care that is client-centered, family focused, and culturally competent.

PRINCIPLES

CYFD believes that children and families should receive:



Services that promote and build individual and family strengths



Services that are provided in the least restrictive setting and most normative environment and are integrated and linked, both within CYFD and with other child-serving agencies and which use peers, family, and natural supports



Early identification and intervention services to address problems as they emerge



Culturally competent services delivered without regard to race, ethnicity, religion, national origin, gender, or disability



Access to a comprehensive array of services that are individualized, community based and, whenever possible, in-home, to meet the unique needs and potential of each child and family



The most effective services that are based on evidence or promising or emerging practices, to achieve positive outcomes



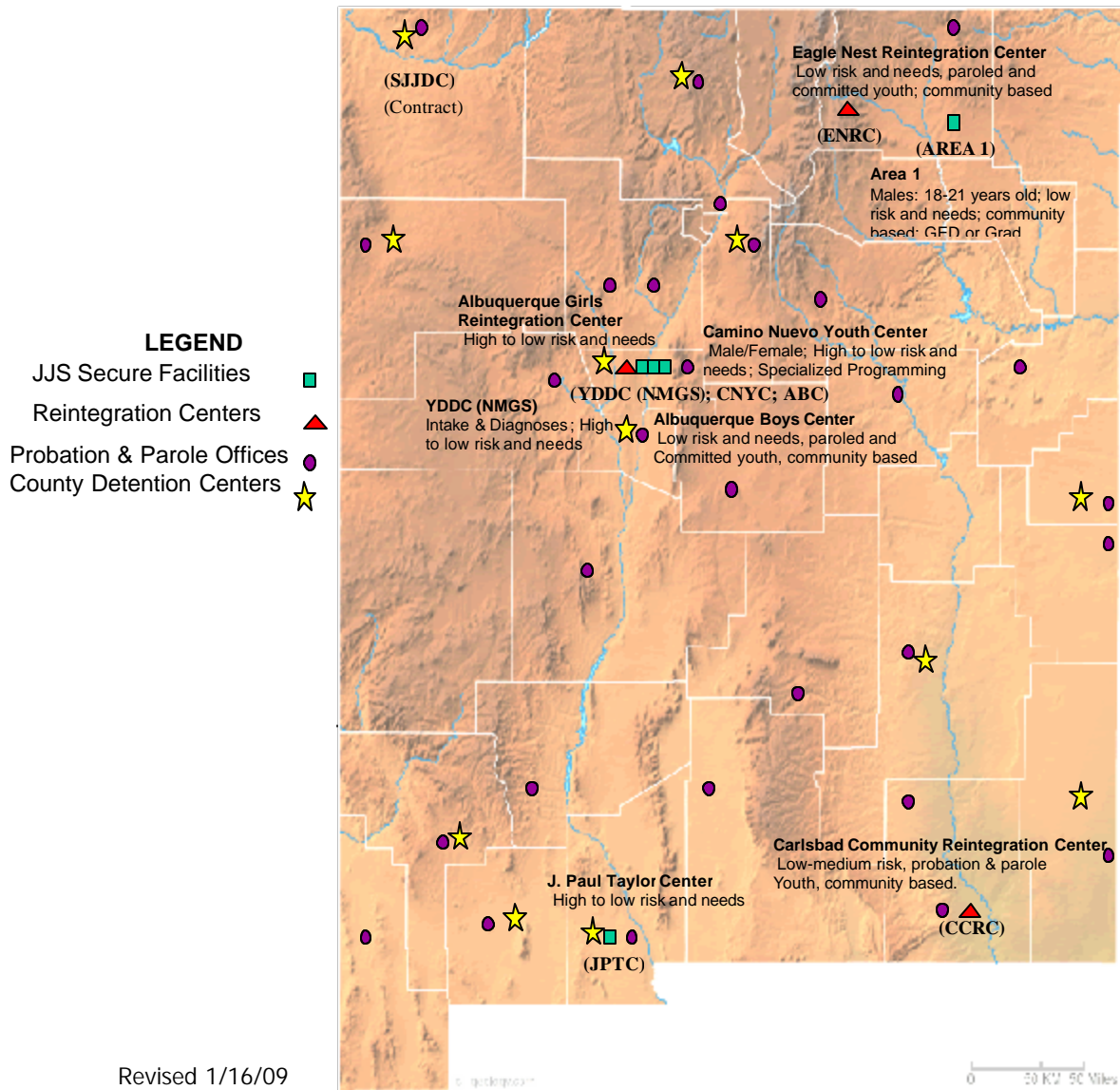
Full participation and choice in all aspects in the planning and delivery of services



Services that insure smooth transitions to adult service systems

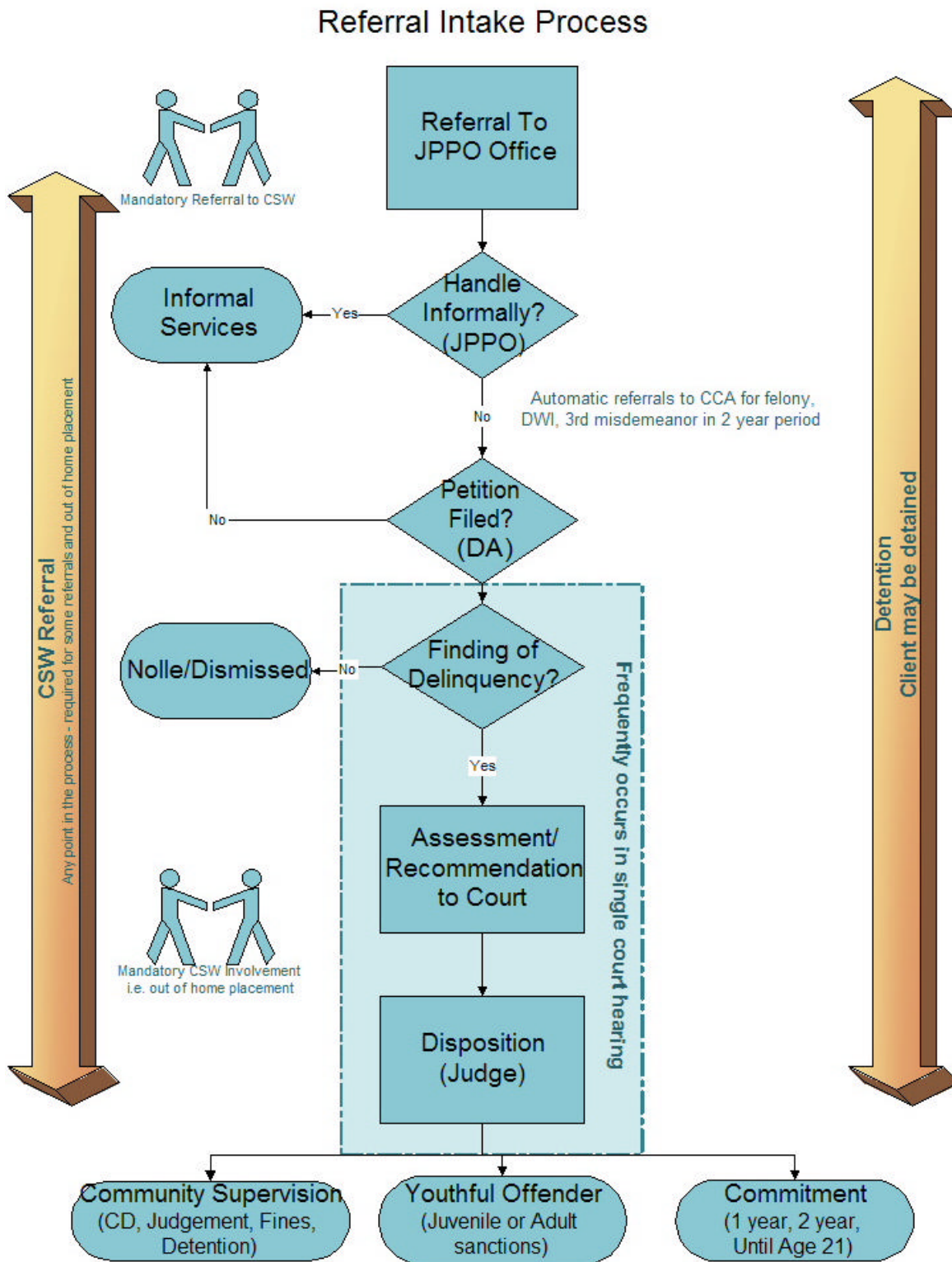


Juvenile Justice Facilities and Descriptions



Juvenile Justice in New Mexico Statistics

Referral Outcome/Elapsed Time



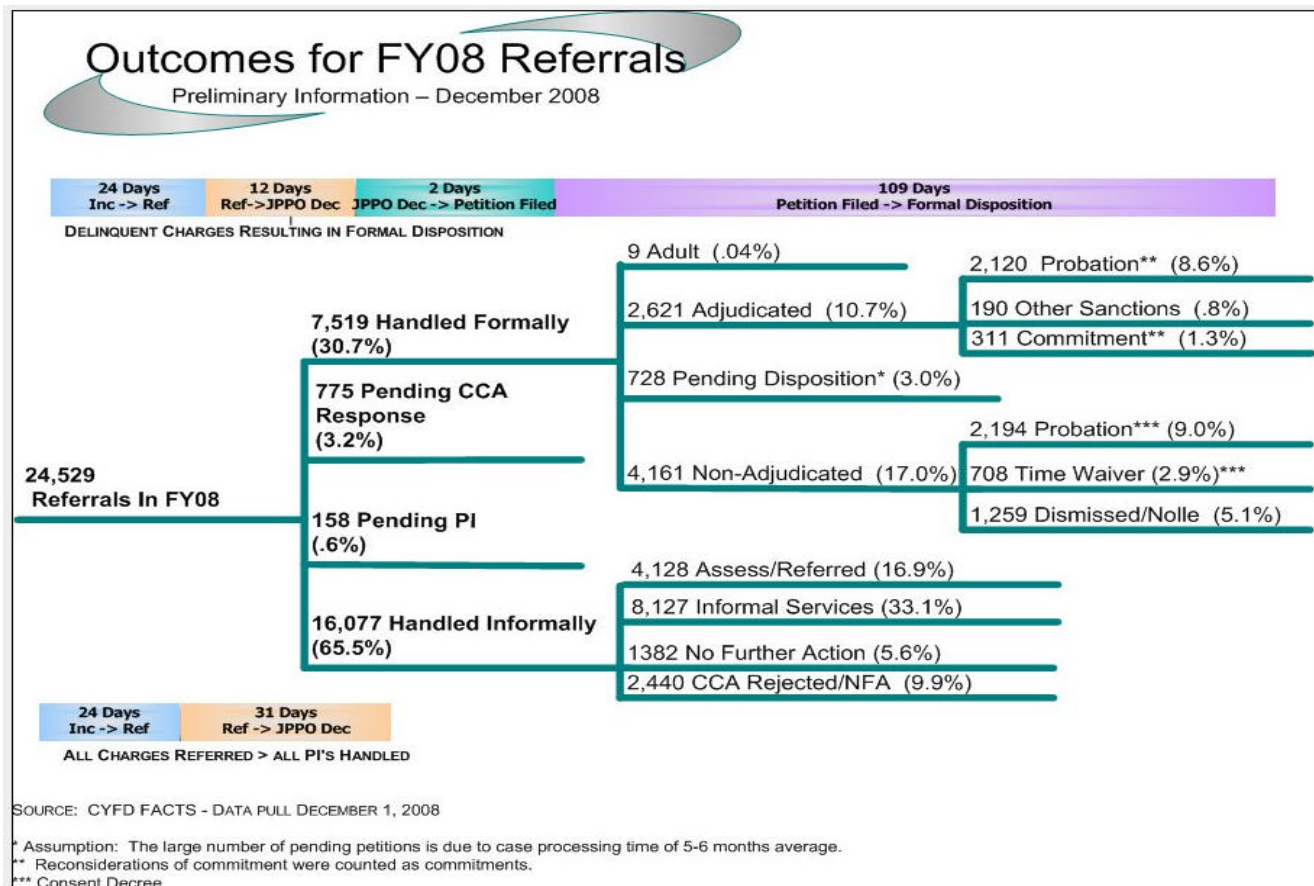


The picture below illustrates the outcome or disposition **of all 24,529 referrals received by JPPO offices during FY08**. It is important to note:

- Dispositions occurred up to December 2008 (the date of the extracted data).
- Each referral's disposition is counted; therefore, a client with multiple referrals has a disposition for each referral represented.
- *Disposition numbers cannot be compared to other summary disposition numbers in this document.* It is important to distinguish as numbers vary because the data is pulled differently:
 - Commitments to a JJS facility (311) represent FY08 referrals resulting in a commitment.
 - Outcomes: FY08 referrals followed through to formal or informal disposition
 - FY08 Dispositions: Based on court hearing date (Date of Judgment/Court Order)
 - FY08 Commitments: Based on admission date to a CYFD Facility

Case Processing Outcomes	
FY07	
Handled Formally	33.4%
Pending PI	1.1%
Handled Informally	61.8%
Pending Disp	3.8%
FY08	
Handled Formally	30.7%
Pending PI	0.6%
Handled Informally	65.5%
Pending Disp	3.2%

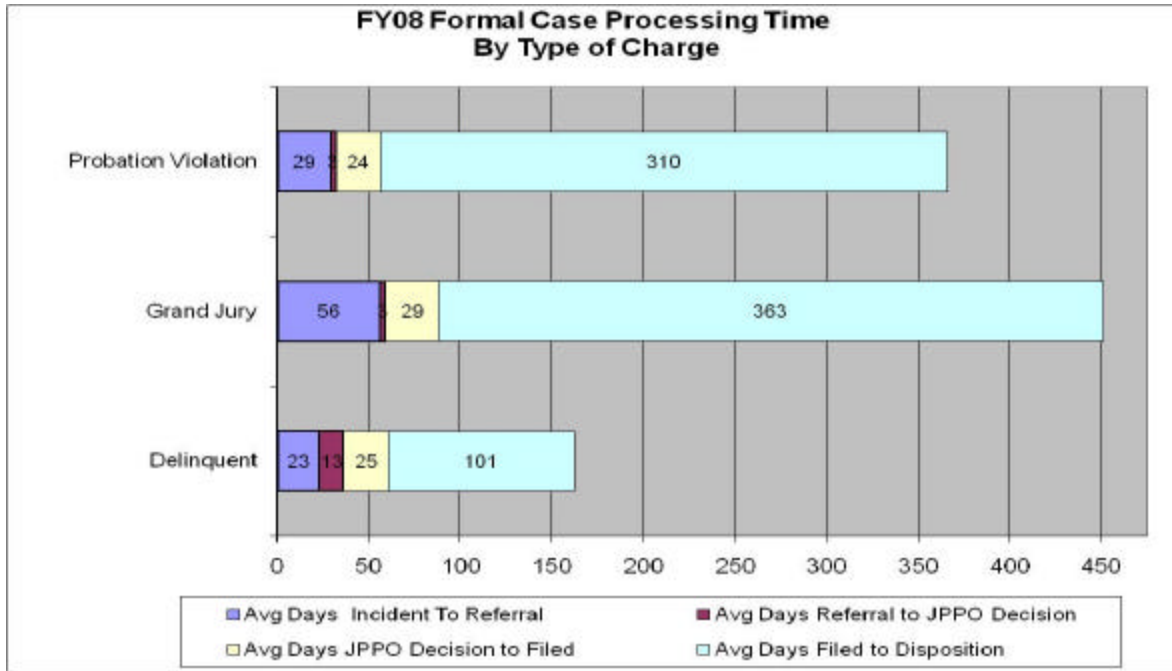
Note that cases pending disposition (3.2% for FY08) will impact final outcomes.



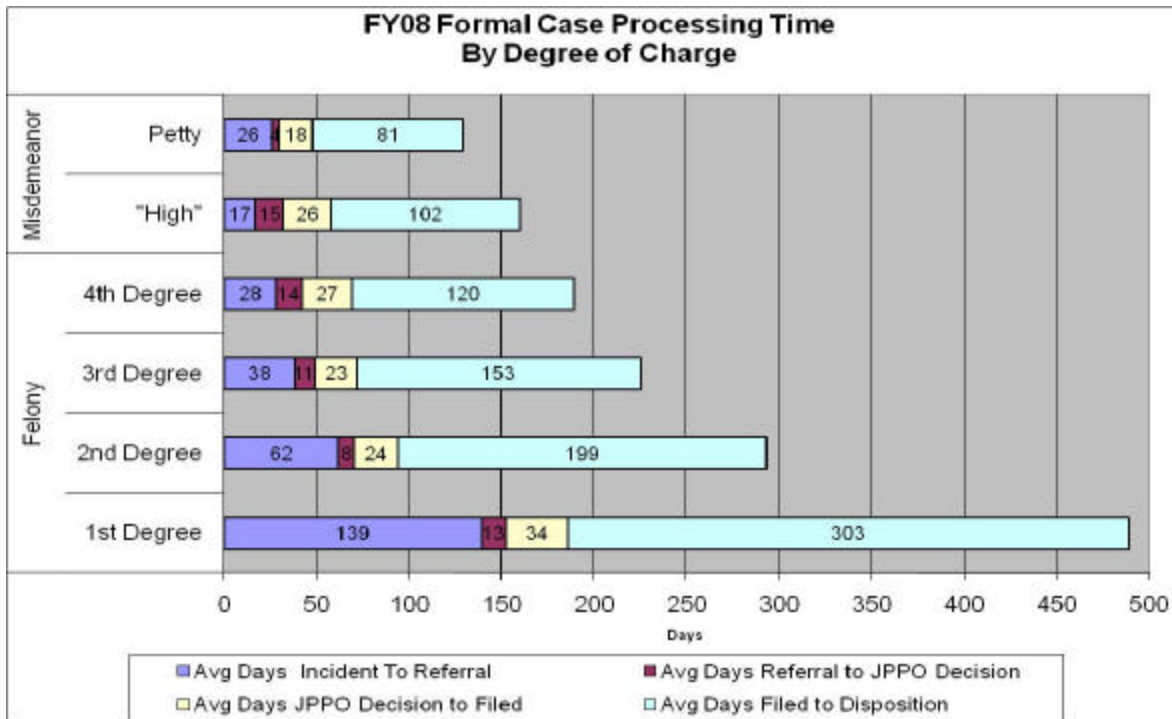


FY08 Formal Case Processing Time

The length of time to disposition is related to the type of petition and seriousness of charge. On average during this fiscal year from the time the incident occurred to the date of disposition, it would take 300 additional days to get through the major decision points for a client charged with a 1st Degree felony rather than a 4th Degree Felony.



SOURCE: FACTS DATA PULLED 10-15-08

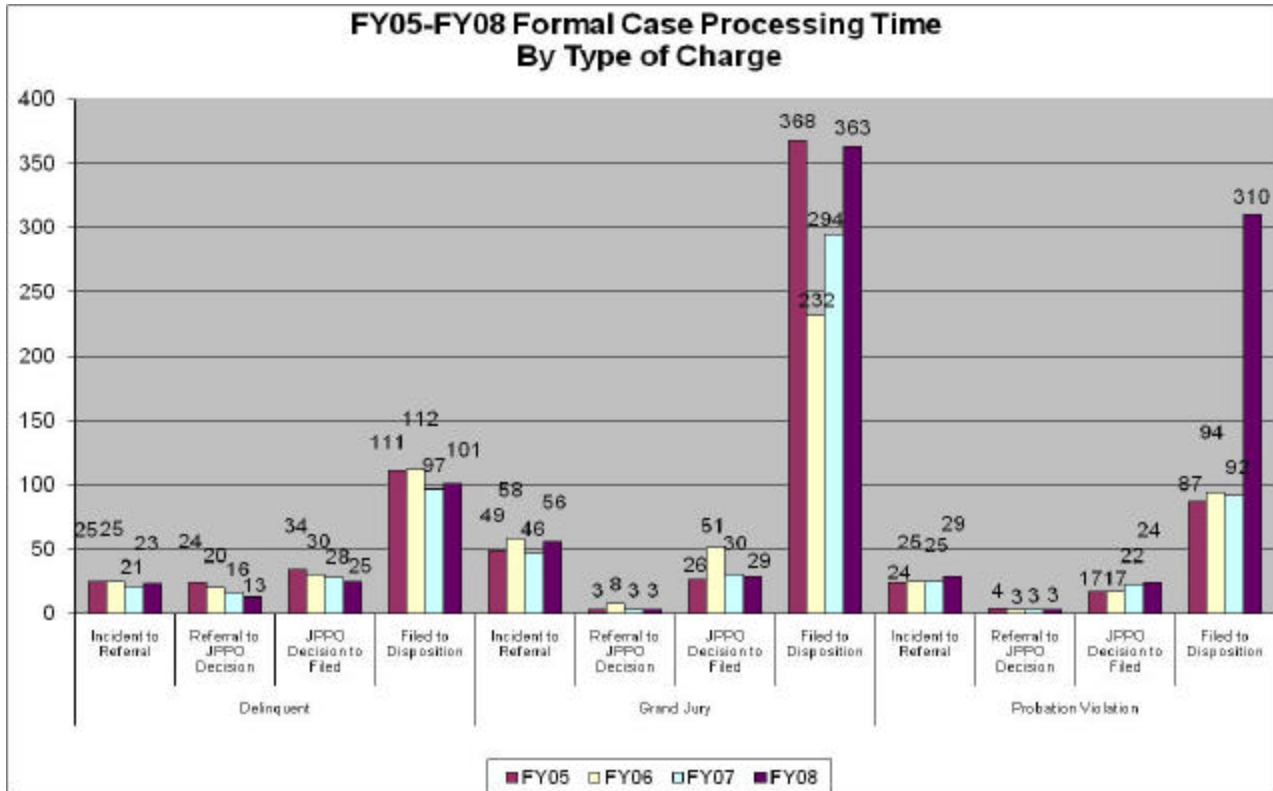


SOURCE: FACTS DATA PULLED 10-15-08



FY05-FY08 Formal Case Processing Time

The following reflects the change in case processing time by “petition type” between FY05-FY08.



SOURCE: FACTS DATA PULLED 10-15-08

The following information illustrates the elapsed time between major decision points only for those cases in which a formal disposition occurred between July 2004 and June 2008 (entered into FACTS as of 10/15/08).

Methodology

- All cases with a finding of delinquency or conviction are included.
- Every charge on petitions disposed during the period is selected. A case is a single petitioned offense record.
- There are typically multiple charges per petition. Each petitioned charge has a charge disposition.
- "Delinquent" Column includes all charges where the Petition Type was not Grand Jury or Criminal Information and the offense was not probation violation.
- "Grand Jury" column includes any charges in a petition whose type is Grand Jury or Criminal Information.
- "Probation Violation" column includes charges where the Petition Type is not Grand Jury or Criminal Information and the charge is a probation violation.
- The “first” disposition on the case is used for disposition date (Reconsiderations and time waivers are included, but the first disposition on the case is used.)

Constraints: Two of the five dates are "data entry" dates in FACTS.



Incident Date: Recorded from the petitioned offense.
 Referral Date: The date the referral is received.
 JPPO Decision: The date the PI decision is entered into FACTS by the JPPO.
 Date Filed: The date the petition was filed.
 Disposition Date: The date of the disposition.

FY06-FY08 Formal Case Processing Time by Region/District

Region	District	Charge Type	Inc To Ref (Average Days)			Ref to JPPO Dec (Average Days)			JPPO Dec to Filed (Average Days)			Filed to Disp (Average Days)		
			FY06	FY07	FY08	FY06	FY07	FY08	FY06	FY07	FY08	FY06	FY07	FY08
1	11	Delinquent	29	23	19	16	15	11	25	19	12	146	119	111
		Grand Jury	0	0	3	0	0	0	0	0	55	0	0	158
		Prob. Violation	3	1	15	1	1	0	1	0	0	45	34	51
	13	Delinquent	26	20	28	20	17	15	54	66	42	122	121	144
		Grand Jury	4	10	3	0	31	2	10	116	20	244	49	165
		Prob. Violation	27	23	24	4	2	2	14	21	19	77	98	207
Region 1 Total			27	21	24	17	15	13	39	43	30	129	119	131
2	1	Delinquent	25	12	11	17	10	8	32	24	14	85	82	79
		Grand Jury	77	7	95	12	2	4	45	39	32	136	289	297
		Prob. Violation	4	13	21	3	1	1	17	14	15	66	75	168
	8	Delinquent	37	21	16	21	16	9	46	33	18	100	102	90
		Grand Jury	37	0	0	7	0	0	70	0	0	18	0	0
		Prob. Violation	33	19	14	3	3	7	12	16	32	63	76	427
4	Delinquent	22	18	18	12	11	8	16	11	15	98	73	89	
	Prob. Violation	35	20	0	1	3	0	7	8	0	72	75	0	
	Region 2 Total	27	15	17	15	10	8	30	22	16	89	88	95	
3	2	Delinquent	22	17	20	23	18	15	27	28	29	119	94	105
		Grand Jury	63	49	60	8	4	4	57	27	28	239	309	430
		Prob. Violation	26	26	32	3	3	3	21	27	34	109	105	416
Region 3 Total			23	19	21	19	15	14	27	28	29	120	101	120
4	5	Delinquent	19	18	18	18	15	11	37	38	22	62	55	60
		Grand Jury	0	5	0	0	0	0	0	7	0	0	678	0
		Prob. Violation	10	15	11	4	11	5	22	17	39	94	135	471
	9	Delinquent	35	26	33	16	13	8	24	20	14	99	92	101
		Grand Jury	9	16	33	12	0	3	11	21	11	345	1,072	434
		Prob. Violation	21	24	24	6	2	2	6	12	6	58	67	173
10	Delinquent	7	24	24	14	9	15	30	10	14	94	95	100	
	Grand Jury	1	0	0	0	0	0	21	0	0	534	0	0	
	Prob. Violation	22	47	0	36	1	0	28	6	0	53	87	0	
14	Delinquent	25	44	27	5	5	6	21	18	23	60	75	88	
	Grand Jury	0	111	2	0	0	0	0	32	37	0	209	67	
	Prob. Violation	29	27	51	2	2	8	4	9	15	50	55	159	
Region 4 Total			24	31	26	10	9	8	23	21	20	72	79	89
5	3	Delinquent	36	28	34	19	17	12	25	19	22	102	99	89
		Grand Jury	11	3	8	0	0	2	23	1	21	257	20	778
		Prob. Violation	23	21	21	1	3	2	18	19	17	84	79	264
	6	Delinquent	38	28	27	14	14	13	27	19	20	44	51	39
		Grand Jury	0	0	0	0	0	0	0	0	0	0	0	0
		Prob. Violation	1	9	24	0	5	0	0	3	0	32	12	8
7	Delinquent	32	28	34	21	22	27	42	22	15	98	130	97	
	Grand Jury	1	0	1	0	0	0	21	0	13	233	0	238	
	Prob. Violation	45	25	116	2	9	0	5	6	0	78	55	129	
12	Delinquent	25	19	28	17	13	11	27	31	24	186	129	111	
	Grand Jury	0	4	0	0	10	0	0	4	0	0	12	0	
	Prob. Violation	44	57	0	3	8	0	11	23	0	111	65	0	
Region 5 Total			33	25	32	17	16	13	28	22	22	113	105	95
Statewide Total			26	22	24	17	14	12	28	28	25	111	100	109



Census Population: New Mexico by County: Age 10-17

County	1990 Population: Age 10-17	2000 Population: Age 10-17	Percent Change from 1990 to 2000
Bernalillo	51,553	63,438	23.05%
Catron	335	404	20.60%
Chaves	7,773	8,562	10.15%
Cibola	3,637	3,628	-0.25%
Colfax	1,808	1,802	-0.33%
Curry	5,305	5,949	12.14%
DeBaca	233	297	27.47%
Dona Ana	17,619	23,646	34.21%
Eddy	6,514	7,015	7.69%
Grant	3,892	3,884	-0.21%
Guadalupe	543	593	9.21%
Harding	139	95	-31.65%
Hidalgo	957	889	-7.11%
Lea	8,178	7,977	-2.46%
Lincoln	1,385	2,228	60.87%
Los Alamos	2,254	2,409	6.88%
Luna	2,445	3,443	40.82%
McKinley	9,690	13,304	37.30%
Mora	534	745	39.51%
Otero	6,301	8,689	37.90%
Quay	1,400	1,288	-8.00%
Rio Arriba	4,756	5,621	18.19%
Roosevelt	1,984	2,279	14.87%
San Juan	14,403	17,806	23.63%
San Miguel	3,371	4,066	20.62%
Sandoval	7,876	12,363	56.97%
Santa Fe	11,039	14,592	32.19%
Sierra	819	1,308	59.71%
Socorro	2,031	2,444	20.33%
Taos	2,991	3,641	21.73%
Torrance	1,530	2,508	63.92%
Union	498	584	17.27%
Valencia	6,011	9,278	54.35%
Total State	189,804	236,775	24.75%

Source: U.S. Census Bureau, Census 2000, Summary File1.

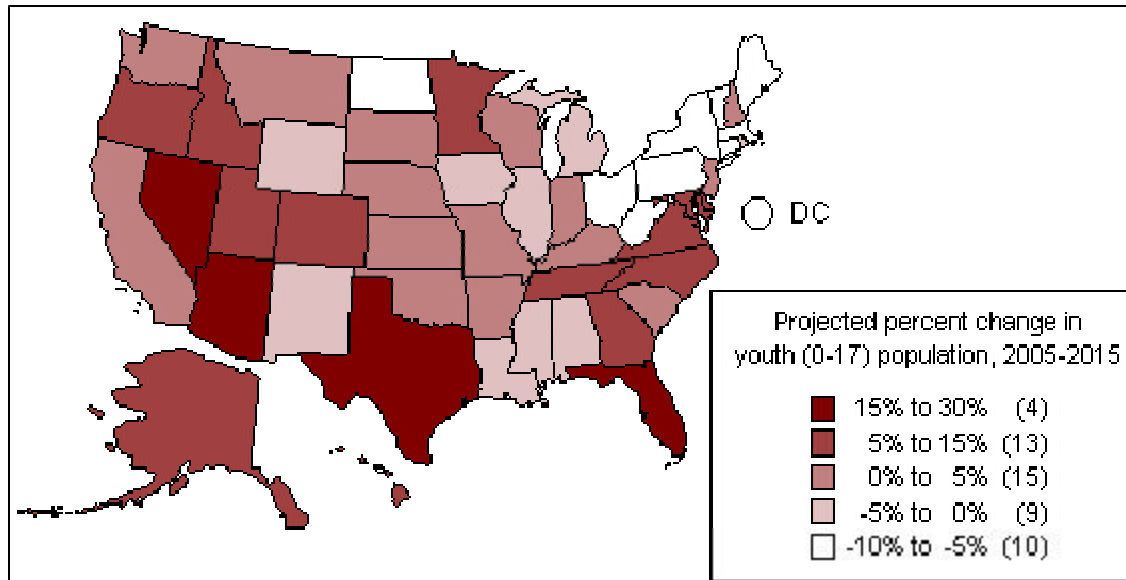


**Race and Ethnic Characteristics of New Mexico
Juvenile Population: Ages 10-17, By County, 2007**

County	American					Total
	White	Black	Indian	Asian	Hispanic	
All Counties	179832	9707	28933	3576	117350	222048
Bernalillo County	55501	4187	4047	1872	36365	65607
Catron County	273	5	13	2	61	293
Chaves County	6898	276	137	70	4399	7381
Cibola County	1464	52	1716	14	1054	3246
Colfax County	1361	12	52	7	836	1432
Curry County	4522	748	101	162	2369	5533
De Baca County	162	1	3	1	68	167
Dona Ana County	21672	981	412	239	17864	23304
Eddy County	5710	202	141	43	3161	6096
Grant County	2858	81	74	17	1768	3030
Guadalupe County	376	2	3	7	327	388
Harding County	55	1	4	0	22	60
Hidalgo County	652	9	5	0	443	666
Lea County	6357	501	94	53	4042	7005
Lincoln County	1849	42	94	7	841	1992
Los Alamos County	1848	31	10	131	350	2020
Luna County	3214	59	60	17	2580	3350
McKinley County	1591	195	8922	67	1388	10775
Mora County	541	3	18	2	473	564
Otero County	6175	506	647	111	3485	7439
Quay County	886	10	19	11	462	926
Rio Arriba County	3688	45	944	15	3559	4692
Roosevelt County	1973	77	37	19	982	2106
Sandoval County	10695	614	2547	257	5471	14113
San Juan County	8135	392	6802	80	3157	15409
San Miguel County	3051	63	85	33	2695	3232
Santa Fe County	12690	257	671	218	8633	13836
Sierra County	1026	18	40	1	543	1085
Socorro County	1563	42	415	28	1153	2048
Taos County	2658	43	293	17	1975	3011
Torrance County	1950	52	75	9	908	2086
Union County	439	0	4	4	208	447
Valencia County	7999	200	448	62	5708	8709

Source: Puzzanchera, C., Sladky, A. and Kang, W. (2008).
 "Easy Access to Juvenile Populations: 1990-2007." Online.
 Available: <http://www.ojjdp.ncjrs.gov/ojstatbb/ezapop/>

Expected Change in the Juvenile Population Nationwide



Source: *OJJDP Statistical Briefing Book*, online. Available: <http://ojjdp.ncjrs.gov/ojstatbb/population/qa01102.asp?qaDate=2005>. Released on September 22, 2006.

The Office of Juvenile Justice and Delinquency Prevention (OJJDP) expects that from the year 2005 to 2015 there will be a decline in juvenile population, persons 17 and younger, in more than one-third of the states. In this same time period the senior citizen population, persons 65 or older, will increase by a dramatic 28%. According to these projections senior citizens will outpace juveniles in all states.

In New Mexico from 2005 to 2015 OJJDP expects the total state population to increase by 7.3%. While this increase is occurring it is anticipated that the juvenile population (age 0-17) is expected to fall by 0.6%.

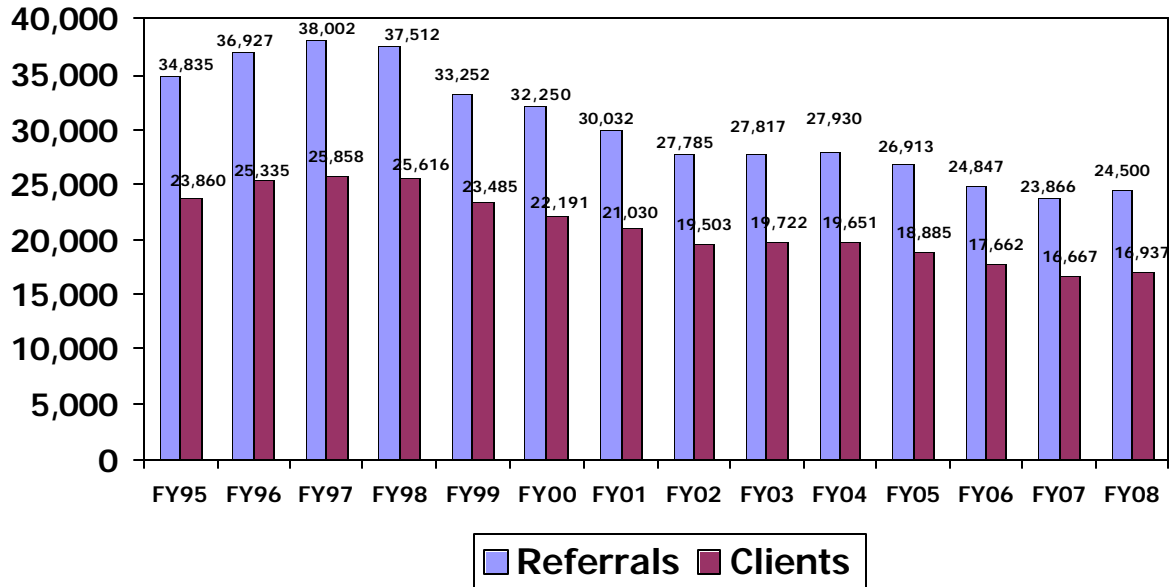


Field Services

Number of Referrals and Clients Referred to JPPO

The following graph shows that the downward trend in Juvenile Justice referrals and clients referred may be changing.

Juvenile Referrals and Population



Source: FACTS & U.S. Census Bureau, Population Division

Juvenile Referrals vs. Individual Client Counts

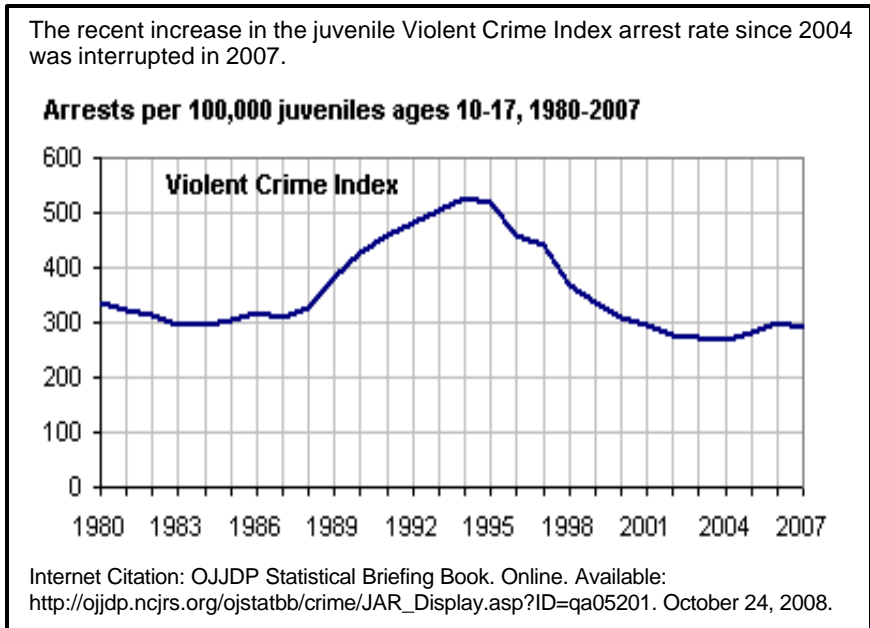
	Referrals	Clients	Annual Rate of Change in Referrals	Annual Change in Client Rate
FY95	34,835	23,860		
FY96	36,927	25,335	6.01%	6.18%
FY97	38,002	25,858	2.91%	2.06%
FY98	37,512	25,616	-1.29%	-0.94%
FY99	33,252	23,485	-11.36%	-8.32%
FY00	32,250	22,191	-3.01%	-5.51%
FY01	30,032	21,030	-6.88%	-5.23%
FY02	27,785	19,503	-7.48%	-7.26%
FY03	27,817	19,722	0.12%	1.12%
FY04	27,930	19,651	0.41%	-0.36%
FY05	26,913	18,885	-3.64%	-3.9%
FY06	24,847	17,662	-7.68%	-6.48%
FY07	23,866	16,667	-3.95%	-5.63%
FY08	24,500	16,937	2.66%	1.62%

Source: FACTS

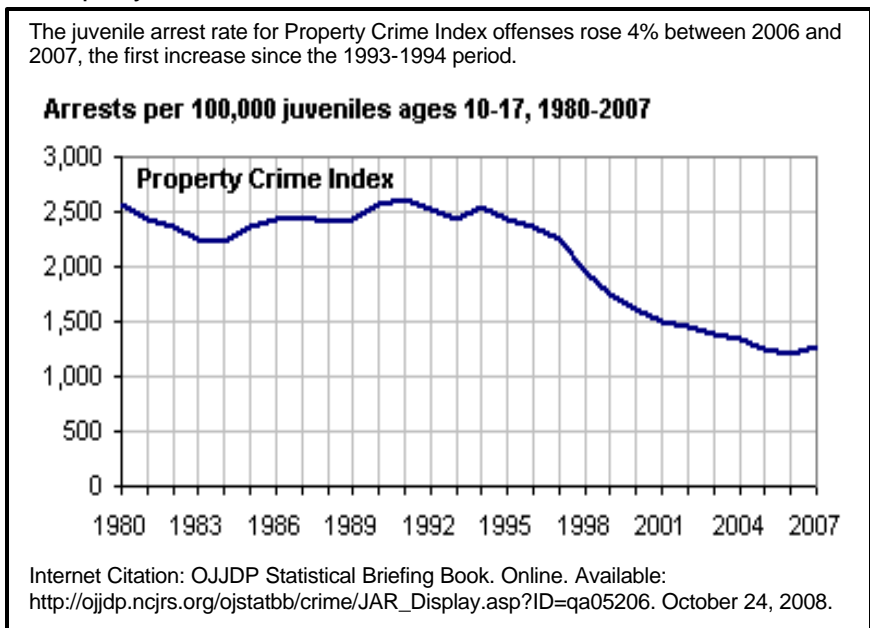


National Juvenile Arrest Rates

- The juvenile Violent Crime Index arrest rate reached a historic low in 2004, down 49% from its 1994 peak. This decade-long decline was followed by a 12% increase over the next 2 years, and then a 3% decline between 2006 and 2007.
- In 2007, there were 292 arrests for Violent Crime index offenses for every 100,000 youth between 10 and 17 years of age.
- If each of these arrests involved a different juvenile (which is unlikely), then no more than 1 in every 340 persons ages 10-17 was arrested for a Violent Crime Index offense in 2007, or about one-third of 1% of all juveniles ages 10 to 17 living in the U.S.



- Despite the recent increase, the 2007 juvenile Property Crime Index arrest rate was 51% below the 1991 peak.
- In 2007, for every 100,000 youth in the U.S. ages 10 to 17, there were 1,270 arrests of juveniles for Property Crime Index offenses.





FY05-08 Number and Percent Change - Referrals by County, Region, & District

Region	District/County	FY05	FY06	FY07	FY08*	% Change FY05-FY06	% Change FY06-FY07	% Change FY07-FY08	3 yr % Change
Region 1	McKinley	830	699	508	517	-15.78%	-27.32%	1.77%	-37.71%
	San Juan	1,329	1,327	1,238	1,239	-0.15%	-6.71%	0.08%	-6.77%
	District 11	2,159	2,026	1,746	1,756	-6.16%	-13.82%	0.57%	-18.67%
	Cibola	822	263	255	172	-68.00%	-3.04%	-32.55%	-79.08%
	Sandoval	1,235	1,296	1,249	1,608	4.94%	-3.63%	28.74%	30.20%
	Valencia	883	692	674	632	-21.63%	-2.60%	-6.23%	-28.43%
	District 13	2,940	2,251	2,178	2,412	-23.44%	-3.24%	10.74%	-17.96%
REGION 1 TOTAL		5,099	4,277	3,924	4,168	-16.12%	-8.25%	6.22%	-18.26%
Region 2	Los Alamos	57	109	118	131	91.23%	8.26%	11.02%	129.82%
	Rio Arriba	525	575	484	385	9.52%	-15.83%	-20.45%	-26.67%
	Santa Fe	1,172	1,177	1,066	1,195	0.43%	-9.43%	12.10%	1.96%
	District 1	1,754	1,861	1,668	1,711	6.10%	-10.37%	2.58%	-2.45%
	Guadalupe	95	87	119	63	-8.42%	36.78%	-47.06%	-33.68%
	Mora	91	31	52	28	-65.93%	67.74%	-46.15%	-69.23%
	San Miguel	450	455	461	471	1.11%	1.32%	2.17%	4.67%
	District 4	636	573	632	562	-9.91%	10.30%	-11.08%	-11.64%
	Colfax	282	334	189	178	18.44%	-43.41%	-5.82%	-36.88%
	Taos	580	460	435	421	-20.69%	-5.43%	-3.22%	-27.41%
Union	63	87	62	50	38.10%	-28.74%	-19.35%	-20.63%	
District 8	925	881	686	649	-4.76%	-22.13%	-5.39%	-29.84%	
REGION 2 TOTAL		3,315	3,315	2,986	2,922	0.00%	-9.92%	-2.14%	-11.86%
Region 3	District 2 - Bernalillo	8,669	7,467	7,199	7,205	-13.87%	-3.59%	0.08%	-16.89%
REGION 3 TOTAL		8,669	7,467	7,199	7,205	-13.87%	-3.59%	0.08%	-16.89%
Region 4	District 5- Lea	955	1,127	1,015	1,026	18.01%	-9.94%	1.08%	7.43%
	Curry	884	969	827	865	9.62%	-14.65%	4.59%	-2.15%
	Roosevelt	142	161	187	199	13.38%	16.15%	6.42%	40.14%
	District 9	1,026	1,130	1,014	1,064	10.14%	-10.27%	4.93%	3.70%
	DeBaca	10	6	4	15	-40.00%	-33.33%	275.00%	50.00%
	Harding	5	3	2	3	-40.00%	-33.33%	50.00%	-40.00%
	Quay	203	125	137	186	-38.42%	9.60%	35.77%	-8.37%
	District 10	218	134	143	204	-38.53%	6.72%	42.66%	-6.42%
	Chaves	1,076	1,206	1,043	993	12.08%	-13.52%	-4.79%	-7.71%
	Eddy	849	811	907	950	-4.48%	11.84%	4.74%	11.90%
District 14	1,925	2,017	1,950	1,943	4.78%	-3.32%	-0.36%	0.94%	
REGION 4 TOTAL		4,124	4,408	4,122	4,237	6.89%	-6.49%	2.79%	2.74%
Region 5	District 3 - Dona Ana	2,838	2,775	3,040	3,326	-2.22%	9.55%	9.41%	17.20%
	Grant	307	254	301	480	-17.26%	18.50%	59.47%	56.35%
	Hidalgo	33	68	45	83	106.06%	-33.82%	84.44%	151.52%
	Luna	364	339	278	311	-89.29%	-17.99%	11.87%	-14.56%
	District 6	704	661	624	874	-6.11%	-5.60%	40.06%	24.15%
	Catron	33	12	22	30	-63.64%	83.33%	36.36%	-9.09%
	Sierra	161	202	145	128	25.47%	-28.22%	-11.72%	-20.50%
	Socorro	413	338	309	235	-18.16%	-8.58%	-23.95%	-43.10%
	Torrance	206	246	235	209	19.42%	-4.47%	-11.06%	1.46%
	District 7	813	798	711	602	-1.85%	-10.90%	-15.33%	-25.95%
	Lincoln	302	246	263	274	-18.54%	6.91%	4.18%	-9.27%
	Otero	1,048	899	997	892	-14.22%	10.90%	-10.53%	-14.89%
District 12	1,350	1,145	1,260	1,166	-15.19%	10.04%	-7.46%	-13.63%	
REGION 5 TOTAL		5,705	5,379	5,635	5,968	-5.71%	4.76%	5.91%	4.61%
STATEWIDE TOTALS		26,912	24,846	23,866	24,500	-7.68%	-3.94%	2.66%	-8.96%

Source: CYFD FACTS Database – *RUN DATE: 10/15/08



FY08 Referrals by Type by Region/District/County

From FY07 to FY08 the total number of referrals increased by approximately 2.7%.

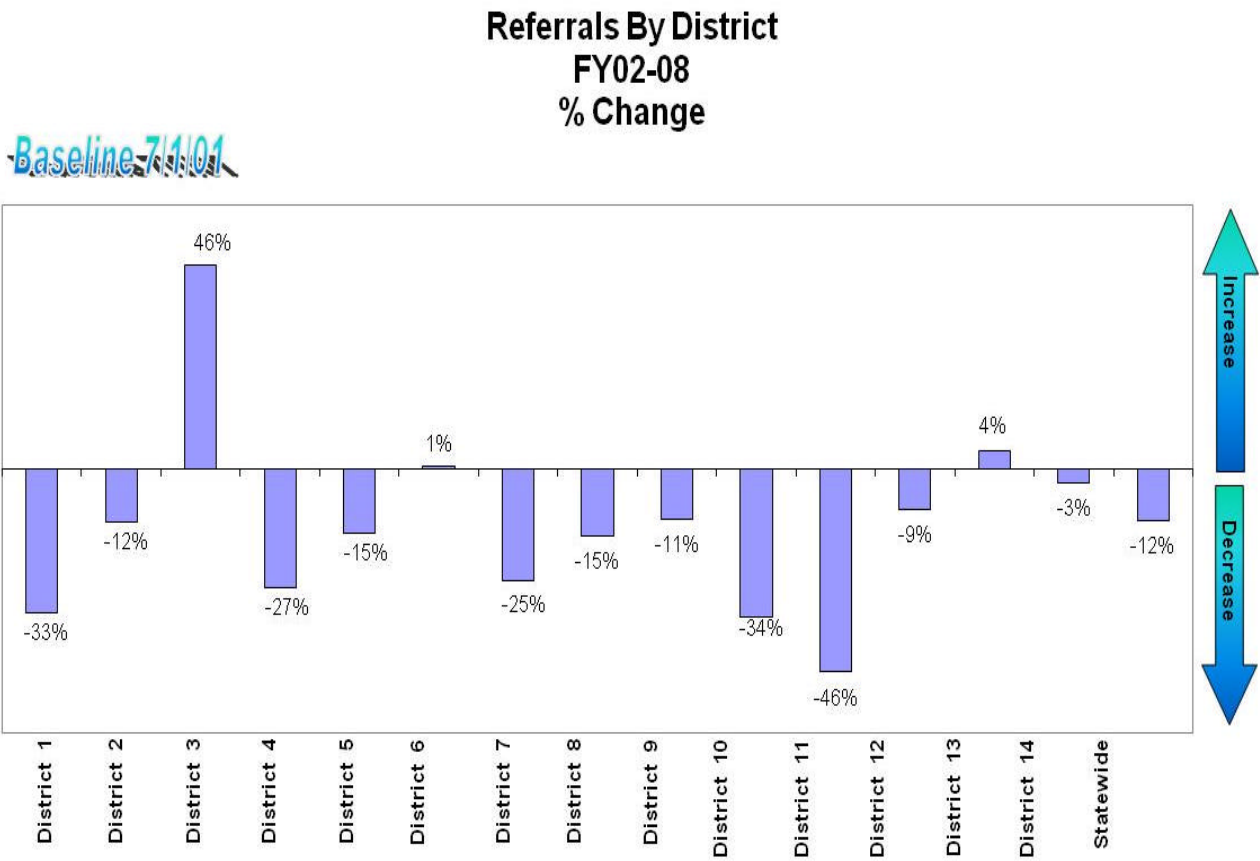
Region	District	County	Delinquent Referrals	Non Delinquent Referrals*	Probation Violation	Grand Total
Region 1	11	McKinley	444	69	4	517
		San Juan	1,021	149	69	1,239
		Cibola	133	8	31	172
	13	Sandoval	1,470	26	112	1,608
		Valencia	585	16	31	632
REGION 1 Total			3,653	268	247	4,168
Region 2	1	Los Alamos	120	9	2	131
		Rio Arriba	305	35	45	385
		Santa Fe	1,087	63	45	1,195
	4	Guadalupe	54	6	3	63
		Mora	23	3	2	28
		San Miguel	414	21	36	471
		Colfax	155	4	19	178
	8	Taos	239	142	40	421
		Union	45	1	4	50
REGION 2 Total			2,442	284	196	2,922
Region 3	2	Bernalillo	6,028	753	424	7,205
	REGION 3 Total			6,028	753	424
Region 4	5	Lea	725	263	38	1,026
		Curry	640	55	170	865
	9	Roosevelt	154	24	21	199
		De Baca	14	1	0	15
		Harding	3	0	0	3
	10	Quay	164	4	18	186
		Chaves	902	42	49	993
		Eddy	841	54	55	950
REGION 4 Total			3,443	443	351	4,237
Region 5	3	Dona Ana	2,679	472	175	3,326
		Grant	282	180	18	480
	6	Hidalgo	82	0	1	83
		Luna	294	1	16	311
		Catron	23	6	1	30
	7	Sierra	123	4	1	128
		Socorro	185	20	30	235
		Torrance	186	8	15	209
	12	Lincoln	177	69	28	274
		Otero	726	105	61	892
REGION 5 Total			4,757	865	346	5,968
Grand Total			20,323	2,613	1,564	24,500

Source: CYFD FACTS Database – RUN 10/15/08

*Includes Truancy, Runaway, Incurrible – not all districts reporting



FY02-FY08 Percent Change - Referrals by District



Note: Delinquent, non-delinquent, and probation violation referrals were included.

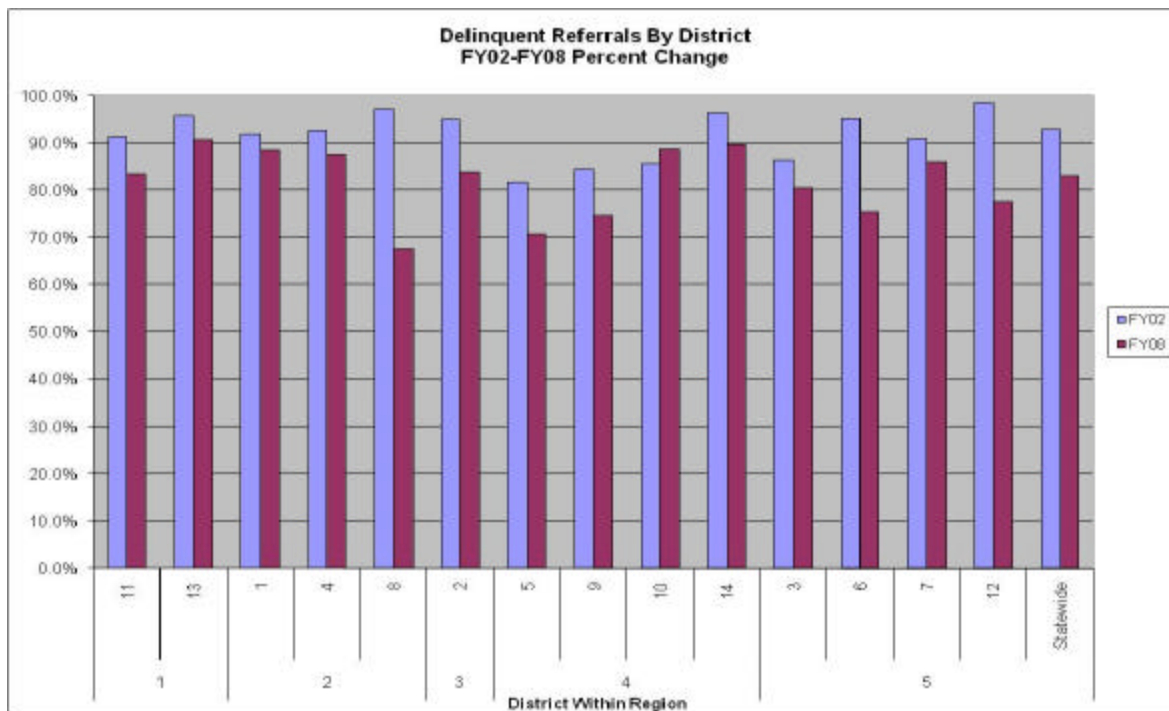
Source: FACTS



FY02-FY08 Delinquent Referrals as Percentage of All Referrals, by District

Region	DISTRICT	FY02			FY08		
		Delinquent Referrals	Non Delinq Referrals	Probation Violation	Delinquent Referrals	Non Delinq Referrals	Probation Violation
1	11	91.1%	6.4%	2.5%	83.4%	12.4%	4.2%
	13	95.7%	1.9%	2.3%	90.7%	2.1%	7.2%
2	1	91.8%	2.9%	5.3%	88.4%	6.3%	5.4%
	4	92.6%	1.0%	6.4%	87.4%	5.3%	7.3%
3	8	97.0%	1.3%	1.8%	67.6%	22.7%	9.7%
	2	94.9%	0.6%	4.5%	83.7%	10.5%	5.9%
4	5	81.6%	12.4%	6.0%	70.7%	25.6%	3.7%
	9	84.3%	0.3%	15.3%	74.6%	7.4%	18.0%
	10	85.6%	1.3%	13.1%	88.7%	2.5%	8.8%
5	14	96.3%	1.2%	2.5%	89.7%	4.9%	5.4%
	3	86.3%	10.0%	3.7%	80.5%	14.2%	5.3%
	6	95.1%	0.2%	4.7%	75.3%	20.7%	4.0%
	7	90.9%	4.9%	4.2%	85.9%	6.3%	7.8%
	12	98.5%	0.7%	0.8%	77.4%	14.9%	7.6%
	Statewide	92.8%	2.8%	4.3%	83.0%	10.7%	6.4%

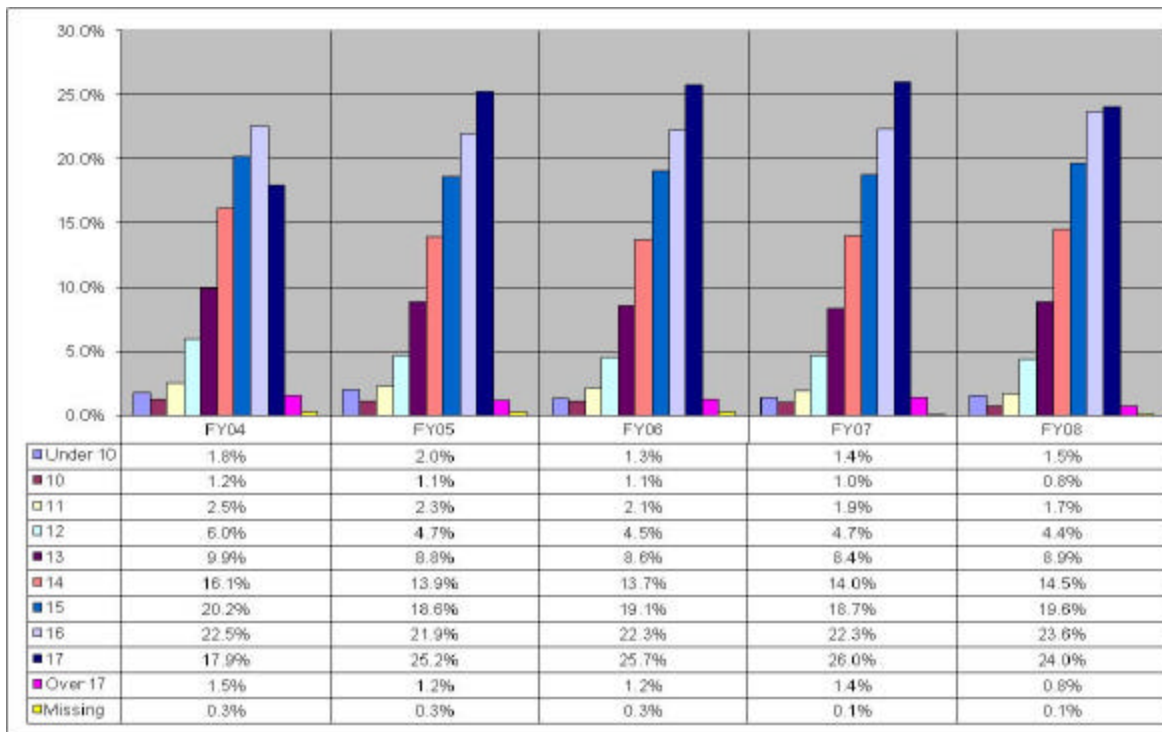
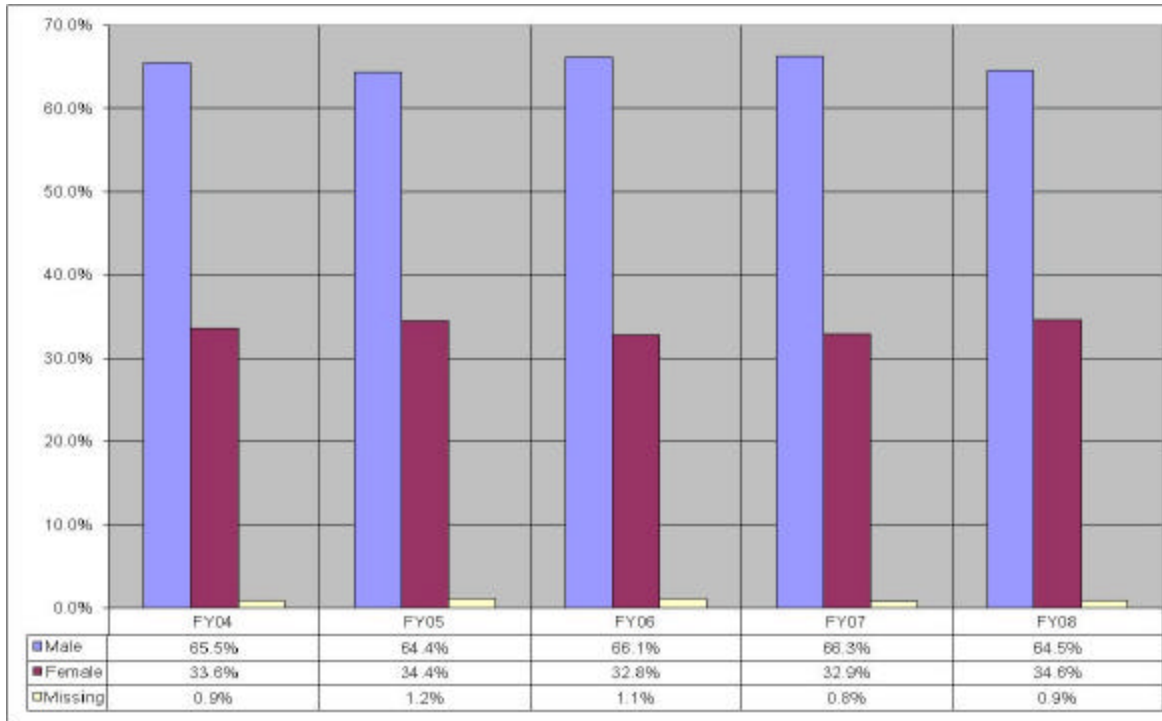
Source: FACTS



Source: FACTS



Clients Referred by Gender & Incident Age*



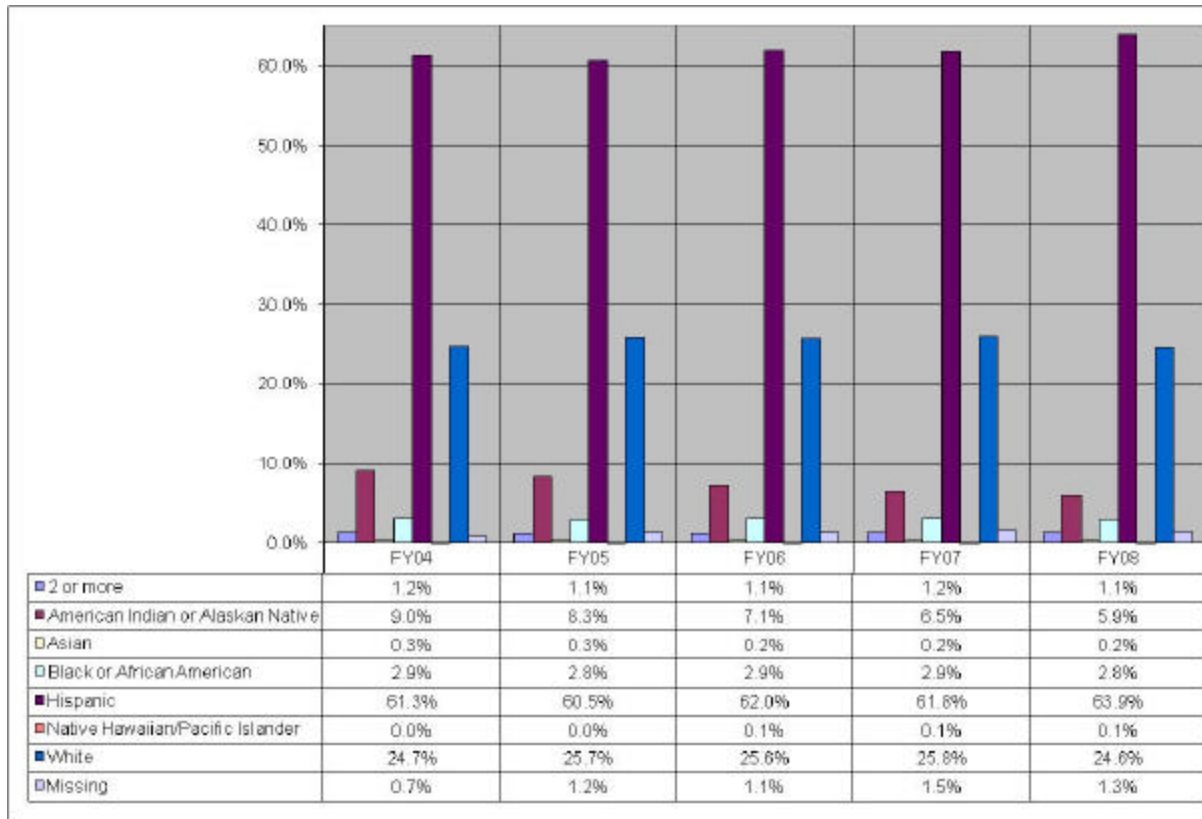
Source: FACTS

The Census Bureau projected that there were 210,520 juveniles (age 10-17) in NM during 2008. 7.85% of juveniles in this age range had at least one referral during the fiscal year.

* Percentages in the tables were derived from unduplicated juvenile counts.



Clients Referred by Ethnicity*



Source: FACTS

As a group Hispanic and White juveniles have accounted for more than 86% of all referrals each fiscal year since FY04. This percentage reached a high of 88.5% in FY08.

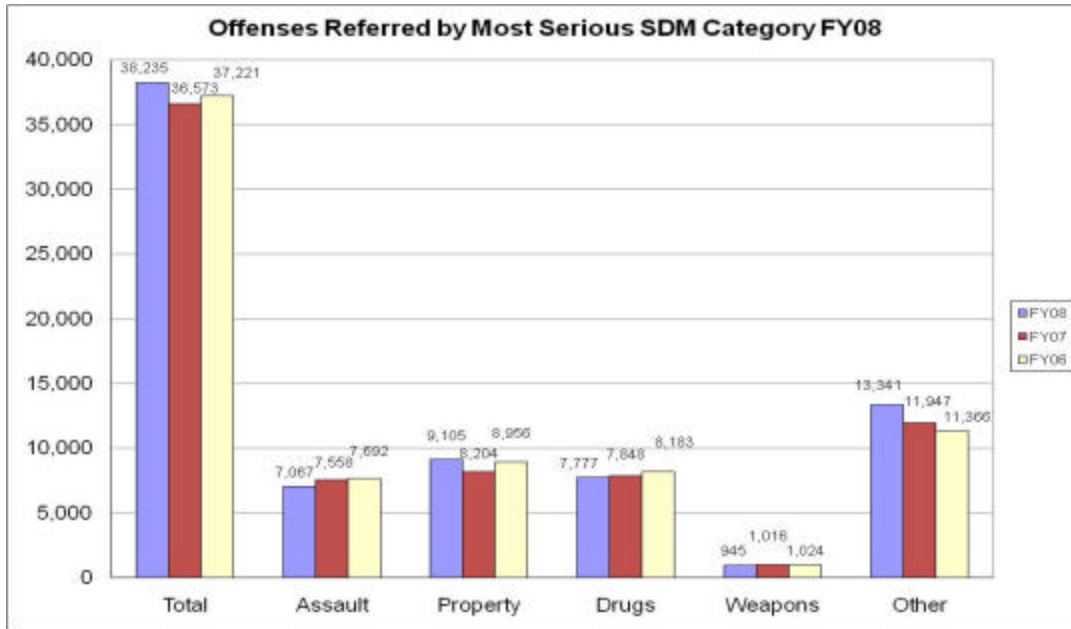
* Percentages in table were derived from unduplicated juvenile counts.



FY08 Offenses Referred

The chart below shows offense breakdowns obtained from JJS FACTS system. Categories based on our SDM offense codes.

The number of offenses referred is greater than the number of referrals due to multiple offenses recorded on the referral. If an offense falls into multiple categories, it is counted once in each SDM category.



In fiscal year 2008, the categories assault, property, drug, weapon, and other accounted for 18.5%, 23.8%, 20.3%, 2.5%, and 34.9% percent of the referred offenses, respectively.

FY08 Top 15 Offenses Referred by Region by Gender

Offense	Region 1			Region 2			Region 3			Region 4			Region 5			Grand Total
	F	M	Tot	F	M	Tot	F	M	Tot	F	M	Tot	F	M	Tot	
Probation Violation	263	549	812	71	362	434	545	939	1484	228	680	924	218	829	1047	4701
Shoplifting (\$250 or less)	183	239	423	70	125	196	581	566	1158	134	187	323	193	253	450	2550
Possession of Marijuana (One Ounce or Less) (1 st Offense)	115	338	455	52	214	266	88	299	396	49	255	306	88	368	457	1880
Battery	126	185	311	131	147	281	155	266	426	110	175	288	204	307	516	1822
Use or Possession of Drug Paraphernalia	104	367	471	52	206	262	89	321	415	28	160	190	57	210	268	1606
Possession of Alcoholic Beverages by a Minor	161	330	494	118	203	327	101	203	306	45	90	136	116	213	331	1594
Criminal Damage to Property	32	193	225	31	140	172	36	393	479	19	115	138	63	345	411	1425
Public Affray	47	75	122	20	29	49	143	167	312	179	221	401	178	238	418	1302
Truancy	34	32	67	94	101	198	15	39	54	149	141	295	246	306	558	1172
Battery (Household Member)	75	121	198	40	47	88	165	208	376	56	99	156	102	154	256	1074
Resisting, Evading or Obstructing an Officer	32	131	164	29	95	125	32	150	182	52	229	282	75	243	319	1072
Runaway	89	53	143	42	17	61	61	34	96	92	65	159	193	186	381	840
Selling or Giving Alcoholic Beverages to a Minor; possession	9	18	27	20	53	75	3	3	6	135	406	546	22	43	67	721
Disorderly Conduct	38	95	133	18	58	78	60	98	159	23	73	96	61	181	243	709
Offenses by Minors	0	4	4	0	0	0	281	291	572	0	0	0	0	0	0	576
Grand Total	1308	2730	4049	788	1797	2612	2355	3977	6421	1299	2896	4240	1816	3876	5722	23044

Note: A juvenile could have multiple offenses referred, and thus be included in the above counts more than once.

Source: FACTS

New Mexico Juvenile Detention Alternative Initiative (JDAI) and System Reform



Since 2002

Children, Youth and Families Department (CYFD), Bernalillo County Juvenile Detention Center (BCJDC), Juvenile Justice Advisory Committee (JJAC), Blue Ribbon Panel Disproportionate Minority Contact (DMC), Association of Counties, Children's Youth Law Center, Annie E. Casey Foundation

JDAI and system reform is implemented nationwide and in New Mexico is a collaborative effort between CYFD- Children, Youth and Families Department and the BCJDC- Bernalillo County Juvenile Detention Center, Director Representative Tom Swisstack. Throughout the state in local communities collaborative partners, the JDAI Statewide Coordinator Stephen P. Archuleta and the JDAI unit have made systematic changes in juvenile detention practices and implemented JDAI objectives:

- ❖ To develop strategies to maintain public safety while applying consistent detention assessment and decision making processes to reduce reliance on secure detention and the number of children inappropriately detained. This is accomplished through improved:
 - ? Collaboration
 - ? Case processing timeframes
 - ? Conditions of confinement
 - ? Data Driven Decisions
 - ? Alternatives to Detention
 - ? Disproportionate minority confinement
 - ? Special Detention Policies
 - ? Admissions policies
- ❖ To promote appearances in court which minimizes the number of youth who fail to appear in court or re-offend pending adjudication while keeping children and families together, where appropriate while maintaining public safety

JDAI Events:

- ❖ A preliminary evaluation/validation of the Risk Assessment Instrument (RAI)
 - ? BCJDC Statistician, Dr. Nicol Moreland was tasked by the Statewide JDAI Steering Committee Data workgroup to conduct evaluation
 - ? The tool was found to appropriately predict risk in nine of ten cases.
 - ? In the event the tool failed to appropriately predict risk, the re-offenses that occurred included non-violent low level misdemeanor offenses
- ❖ CYFD and JJAC seek to support the Continuum, in accord with the legislative appropriation of \$2,000,000.00, through programs that provide cost effective services and temporary, non-secure alternatives to detention for youth arrested or referred to JPPO or at risk of such referral. CYFD and the JJAC also seek to support the



continuum programs previously initiated with federal funding through the JJAC and CYFD.

JDAI Ongoing:

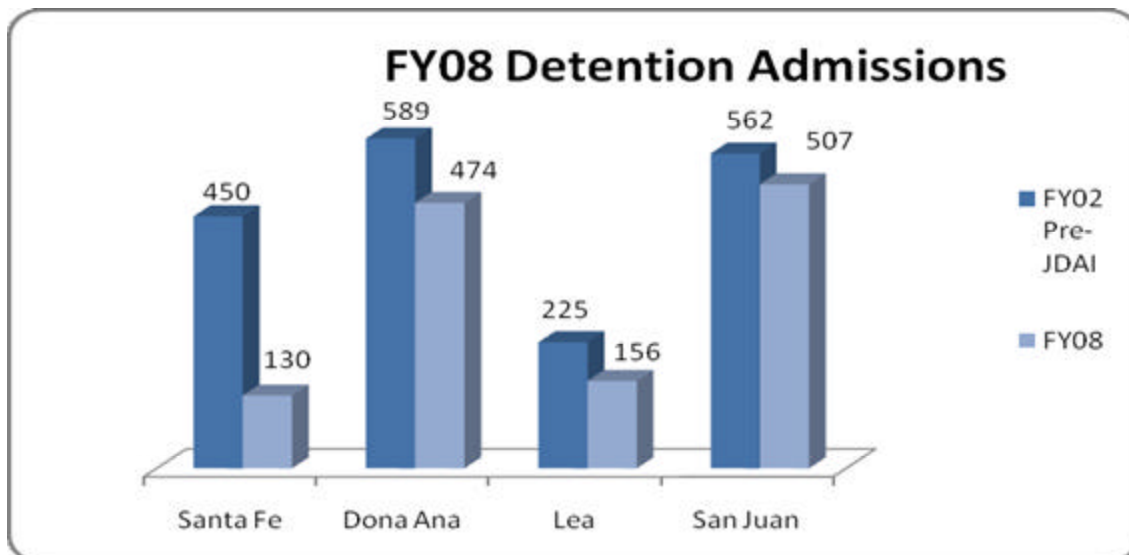
- ❖ NM is the first state to develop an internet-based information system- **SARA** (Screening, Admissions and Releases Application.) This is a secure web site that is available to all Juvenile Justice offices and Detention Centers and Courts. **SARA** consistently screens children presented for detention while also accurately tracking admissions into and releases out of detention and movements from one detention center to another. **SARA** reduces the risk to public safety through unified tracking of client history and outcomes regarding detention and non-secure alternatives.
- ❖ In 2007 and 2008 NM, through the JDAI Office, issued 170 GPS Monitors to all 23 Jurisdictions in New Mexico in order to help bring down the detention population. Policy and Procedures were put into place to ensure only those eligible would be placed on monitors. Furthermore, CYFD enhances the level of supervision and alternatives to detention. The total annual funding available under this RFP is approximately \$400,000.00

FY07 Detention Referrals

A focus on four of the largest counties implementing, practicing and succeeding in JDAI.

- Dona Ana County
- Lea County
- Santa Fe
- San Juan

Admissions into detention
 Source: CYFD RAI database





Ethnicity	DONA ANA		LEA		SAN JUAN		SANTA FE		Total #	Total %
	#	%	#	%	#	%	#	%		
2 or more	20	67%	2	7%	6	20%	2	7%	30	100%
	9	43%	1	5%	11	52%		0%	21	100%
American Indian or Alaskan Native										
Asian	4	2%		0%	218	97%	2	1%	224	100%
Black or African American	1	100%		0%		0%		0%	1	100%
Hispanic	6	23%	11	42%	5	19%	4	15%	26	100%
Missing	373	50%	108	14%	161	22%	103	14%	745	100%
White	1	13%	2	25%	5	63%		0%	8	100%
White	60	28%	32	15%	101	48%	19	9%	212	100%
Grand Total	474	37%	156	12%	507	40%	130	10%	1267	100%

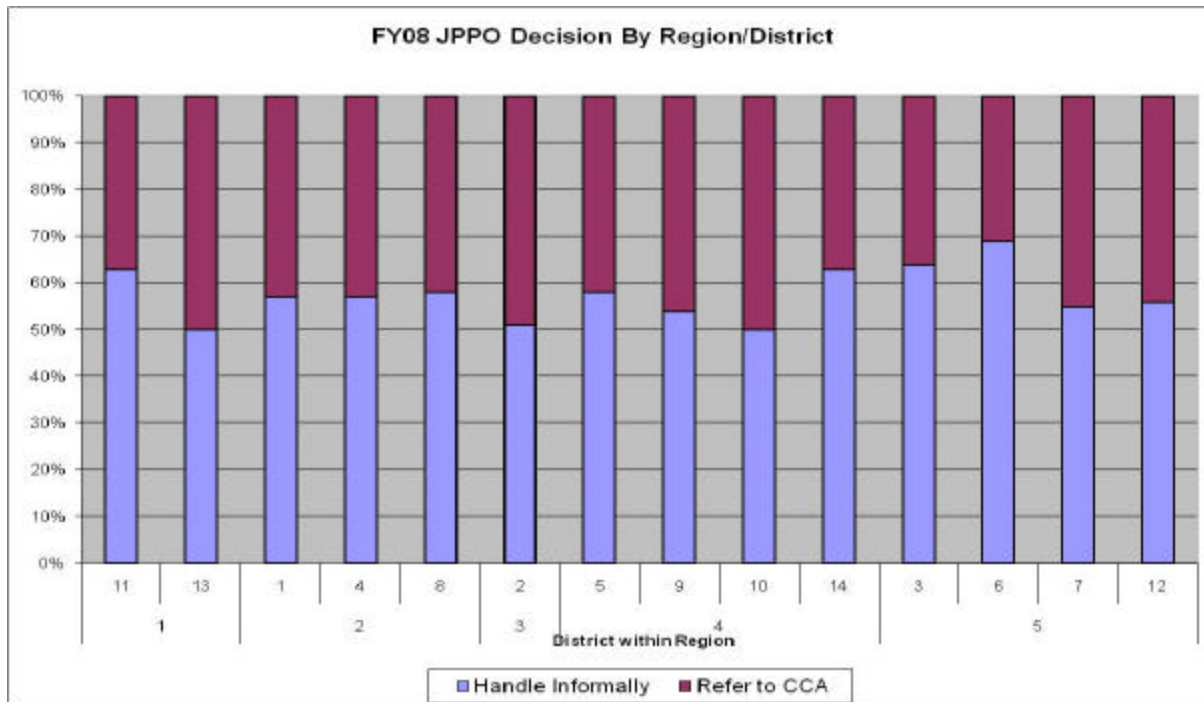
Public Safety Indicator: Percentage of referrals where re-arrest occurred

Source: CYFD FACTS database



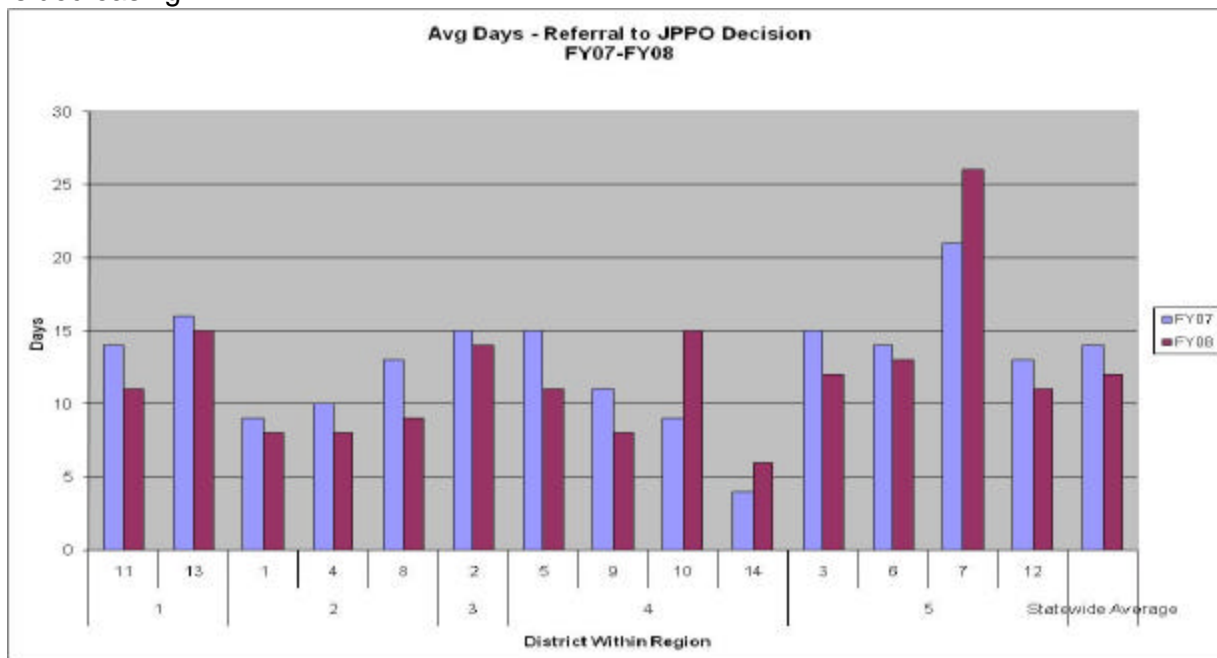
FY08 JPPO/Preliminary Inquiry (PI) Decisions

The majority of referrals are handled informally by the JPPO. Across all districts 56.6% of the referrals received in FY08 were not referred to the children’s court attorney.



Source: FACTS

The chart below indicates that in most districts the length of time from referral to JPPO decision is decreasing.

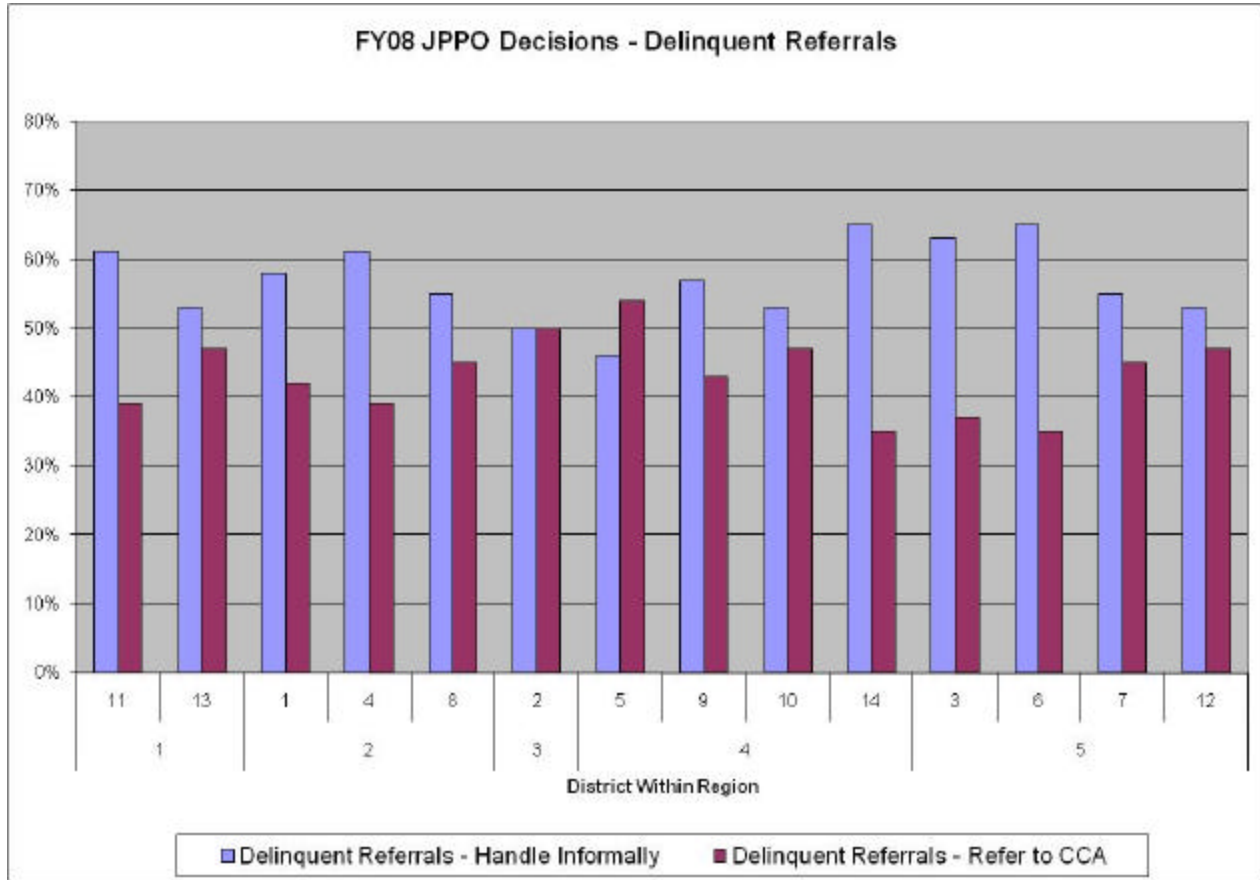


In some districts where the length of time is high, the scheduling of diversion classes may extend the time from referral to JPPO decision. Diversion classes may only be held every 4-6 weeks depending on volume of referrals.



FY08 JPPO Decisions for Delinquent Referrals, by Region/District

In most districts, the majority of decisions regarding delinquent referrals are to attempt informal handling.





FY04-FY08 Offenses Found Delinquent

	Sex	Assault	Property	Drugs	Weapons	Probation	Other	Misdemeanor/Other	Total
Petitioned									
FY04	3327	358	5795	3368	728	2949	499	2454	19478
FY05	3536	282	5733	3093	735	3382	419	2579	19759
FY06	3292	343	5247	2960	792	3371	431	2244	18680
FY07	3306	282	4578	2692	723	3847	415	2112	17955
FY08	3255	197	5157	2704	703	5363	361	2035	19775
Found Delinquent									
FY04	1260	148	2280	1643	311	1556	131	774	8103
FY05	1308	99	2230	1418	297	1855	109	759	8075
FY06	1204	110	2020	1362	315	1903	104	692	7710
FY07	1191	81	1699	1196	289	2233	85	642	7416
FY08	1096	40	2022	1301	266	3134	85	582	8526

FY08 Top 15 Charges Found Delinquent

Offense	Region 1		Region 2		Region 3		Region 4		Region 5		Total	
	#	%	#	%	#	%	#	%	#	%	#	%
Probation Violation	394	7.02%	282	5.03%	339	6.04%	856	15.26%	1263	22.51%	3134	55.85%
Criminal Damage to Property	34	0.61%	38	0.68%	41	0.73%	45	0.80%	99	1.76%	257	4.58%
Possession of Marijuana (One Ounce or Less) (1 st offense)	39	0.70%	20	0.36%	56	1.00%	60	1.07%	56	1.00%	231	4.12%
Driving Under the Influence of Liquor or Drugs (1 st offense)	50	0.89%	37	0.66%	83	1.48%	22	0.39%	34	0.61%	226	4.03%
Battery	44	0.78%	23	0.41%	50	0.89%	51	0.91%	56	1.00%	224	3.99%
Possession of Alcoholic Beverages by a Minor	34	0.61%	25	0.45%	40	0.71%	29	0.52%	74	1.32%	202	3.60%
Resisting, Evading or Obstructing an Officer	28	0.50%	22	0.39%	30	0.53%	58	1.03%	59	1.05%	197	3.51%
Battery (Household Member)	25	0.45%	10	0.18%	54	0.96%	41	0.73%	51	0.91%	181	3.23%
Shoplifting (\$250 or less)	26	0.46%	9	0.16%	52	0.93%	28	0.50%	56	1.00%	171	3.05%
Use or Possession of Drug Paraphernalia	34	0.61%	18	0.32%	35	0.62%	42	0.75%	42	0.75%	171	3.05%
Larceny (\$250 or less)	11	0.20%	7	0.12%	34	0.61%	24	0.43%	65	1.16%	141	2.51%
Burglary (Dwelling House)	13	0.23%	22	0.39%	12	0.21%	23	0.41%	55	0.98%	125	2.23%
Unlawful Carrying of a Deadly Weapon on School Premises	15	0.27%	7	0.12%	35	0.62%	13	0.23%	51	0.91%	121	2.16%
Burglary (Commercial)	8	0.14%	7	0.12%	16	0.29%	30	0.53%	59	1.05%	120	2.14%
Burglary (Automobile)	7	0.12%	5	0.09%	21	0.37%	34	0.61%	43	0.77%	110	1.96%
Grand Total	7631	13.58%	534	9.48%	901	16.00%	1360	24.17%	2068	36.77%	5611	100.00%

- The table above contains the most common charges that were found to have been committed. These counts are of offenses rather than individual youth.



FY 05-08 Formal Dispositions

Disposition	FY05		FY06		FY07		FY08	
	#	%	#	%	#	%	#	%
Probation	2448	31.3%	2054	27.6%	1854	27.4%	1877	26.9%
Consent Decree	1964	25.1%	2199	29.6%	2048	30.3%	2169	31.1%
Dismissed/Nolle	1790	22.9%	1714	23.0%	1432	21.2%	1544	22.2%
Time Waiver	1126	14.4%	960	12.9%	943	14.0%	819	11.8%
Commitment	279	3.6%	272	3.7%	228	3.4%	274	3.9%
Detention	180	2.3%	201	2.7%	216	3.2%	213	3.1%
Adult Sanctions	25	0.3%	18	0.2%	23	0.3%	24	0.3%
YO Commitment	6	0.1%	9	0.1%	2	0.0%	3	0.0%
YO Probation	2	0.0%	5	0.1%	3	0.0%	8	0.1%
YO Detention	2	0.0%	1	0.0%	5	0.1%	2	0.0%
Fines	8	0.1%	4	0.1%	6	0.1%	7	0.1%
Other	0	0.0%	3	0.0%	6	0.1%	25	0.4%
Total	7830	100.0%	7440	100.0%	6766	100.0%	6965	100.0%

Source: CYFD FACTS.

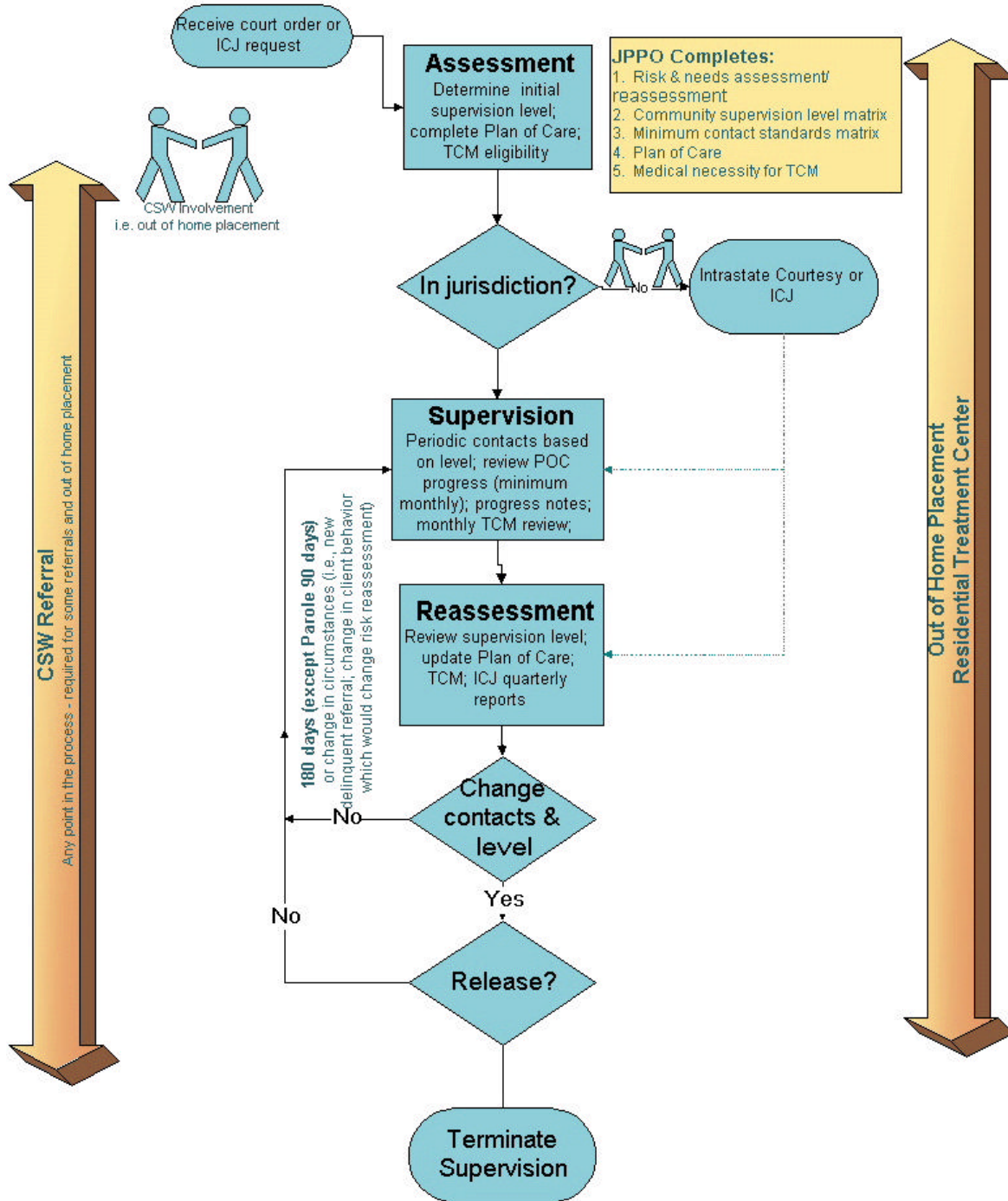
Consent Decree, which provides youth with an opportunity to earn a clean record after successful completion of a period of informal probation, has overtaken Formal Probation as the most common disposition in the last two fiscal years. For FY08, nearly one-third of all dispositions were Consent Decree.



FY08 Formal Dispositions by Type, by Region/District/County

Region	District	Petition County	Formal Probation	Dismissed /Nolle	Time Waiver	Commitment	Detention/Other /Fines	Adult Sanctions	Reconsidered -Probation	Grand Total
1	11	McKinley	53	64	11	1	19	0	0	148
		San Juan	195	152	5	17	23	1	2	395
	11 Total		248	216	16	18	42	1	2	543
	13	Cibola	64	18	12	1	2	0	0	97
		Sandoval	233	106	50	6	4	1	0	400
		Valencia	85	56	64	8	6	0	0	219
13 Total		382	180	126	15	12	1	0	716	
Region 1 Total			630	396	142	33	54	2	2	1259
2	1	Los Alamos	7	3	0	0	0	0	0	10
		Rio Arriba	82	34	8	9	4	0	0	137
		Santa Fe	143	58	22	17	3	0	0	243
		1 Total		232	95	30	26	7	0	0
	4	Guadalupe	13	4	2	0	1	0	0	20
		Mora	4	1	0	0	1	0	0	6
		San Miguel	61	41	16	11	2	0	0	131
	4 Total		78	46	18	11	4	0	0	157
	8	Colfax	39	12	0	5	2	0	0	58
		Taos	71	26	2	6	3	0	0	108
Union		6	0	0	0	1	0	1	8	
8 Total		116	38	2	11	6	0	1	174	
Region 2 Total			426	179	50	48	17	0	1	721
3	2	Bernalillo	1291	527	471	67	24	5	1	2386
	2 Total		1291	527	471	67	24	5	1	2386
Region 3 Total			1291	527	471	67	24	5	1	2386
4	5	Lea	133	126	5	10	40	0	1	315
	5 Total		133	126	5	10	40	0	1	315
	9	Curry	175	36	6	28	16	3	5	269
		Roosevelt	43	12	1	4	4	0	1	65
	9 Total		218	48	7	32	20	3	6	334
	10	De Baca	1	1	0	0	0	0	0	2
		Harding	0	0	0	0	0	0	0	0
		Quay	33	10	4	2	1	0	1	51
	10 Total		34	11	4	2	1	0	1	53
	14	Chaves	117	48	10	15	8	0	0	198
Eddy		180	34	0	10	15	1	1	241	
14 Total		297	82	10	25	23	1	1	439	
Region 4 Total			682	267	26	69	84	4	9	1141
5	3	Dona Ana	553	82	48	16	41	6	0	746
	3 Total		553	82	48	16	41	6	0	746
	6	Grant	78	6	6	0	0	2	0	92
		Hidalgo	13	1	0	0	0	0	0	14
		Luna	60	9	7	4	3	1	1	85
	6 Total		151	16	13	4	3	3	1	191
	7	Catron	5	0	0	0	0	0	0	5
		Sierra	18	15	5	1	1	0	0	40
		Socorro	41	14	5	3	1	3	2	69
		Torrance	40	10	4	5	1	0	0	60
	7 Total		104	39	14	9	3	3	2	174
	12	Lincoln	62	8	18	12	2	1	0	103
Otero		138	30	37	19	19	0	1	244	
12 Total		200	38	55	31	21	1	1	347	
Region 5 Total			1008	175	130	60	68	13	4	1458
Grand Total			4037	1544	819	277	247	24	17	6965

New Mexico Juvenile Justice Services Juveniles in Community Supervision





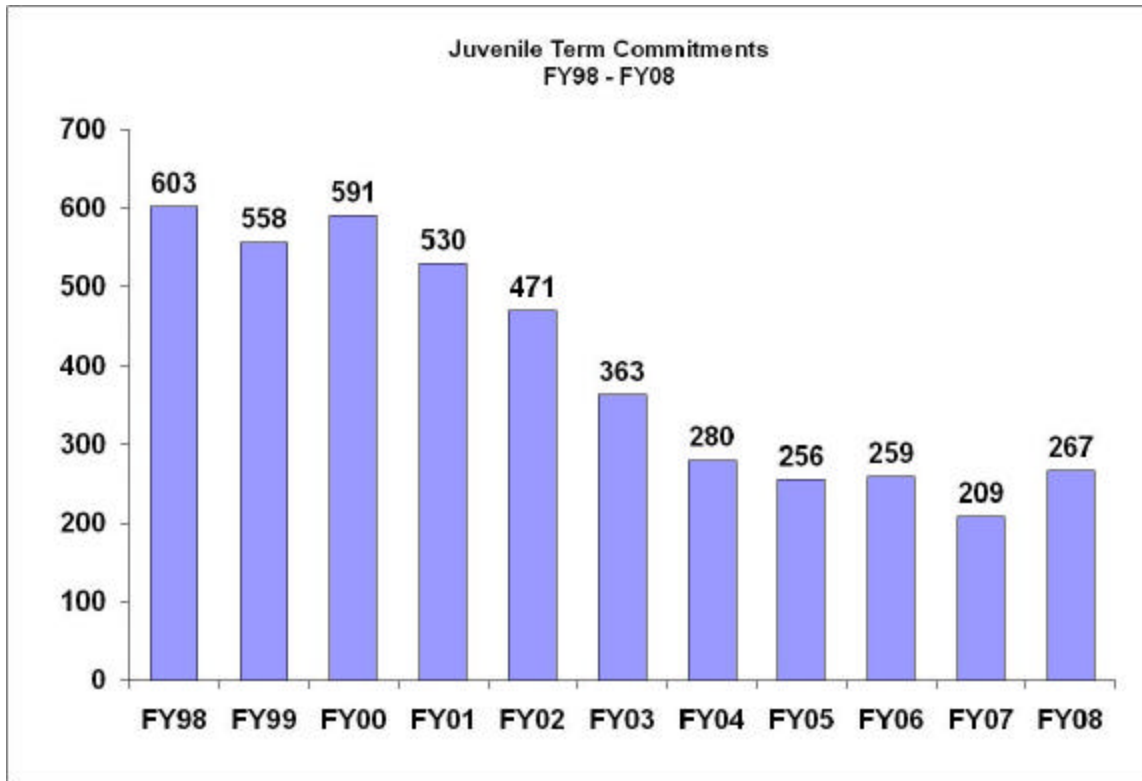
JPPO Caseload on 6/30/08 – Predisposition and Active Supervision by Type

District	County	Pre Disposition	Cond Release	ICJ Parole	ICJ Prob	Informal Conditions	Informal Supervision	Parole	Probation	Time Waiver	Pre-Parole Release	Statewide
1	Rio Arriba	28	13		2		3		59	3		108
	Santa Fe	99	18		3			4	97	11		232
2	Bernalillo	1989	139	3	12	71	11	27	696	226	1	3175
3	Dona Ana	441	4	1	13	329	21		422	46		1277
4	Guadalupe	4	2		1	6	7		13			33
	San Miguel	33	26			17	19	1	53	10		159
5	Lea	194	1		4	54		1	87	1		342
	Grant	12	1		1	34	30		53	3		134
6	Hidalgo											
	Luna	20			3	34	8		41	1		107
7	Sierra	26							8	2		36
	Socorro	68	14	1	1	17	15		57	5		178
7	Torrance											
8	Colfax/Union	39	1		3	9			47			99
	Taos	55	10		1	15		2	55	1		139
9	Curry	75	1	1	3	88	3		124	7		302
	Roosevelt	11				32	5		29			77
10	Quay	20				20			25	4		69
	McKinley	57	12		3	31	15	1	34	2		155
11	San Juan	122	26		3	38	44	3	117	1		354
	Lincoln	19	7			25	2	1	53	19		126
12	Otero	61	17	1	4	85	2		117	36		323
	Cibola	25	16			5			49	10		105
13	Sandoval	222	5		6	64	4		136	20		457
	Valencia	138				16	3	1	80	15		253
14	Chaves	112	3		4	64		5	71	5		264
	Eddy	54			1	63	2	3	146			269
ICJ Out						1		8	38			47
STATEWIDE		3924	316	7	68	1118	194	57	2707	428	1	8820

Source: FACTS Cases by Worker Report 6/30/08.



Facility Services Juvenile Commitments and Admissions



Source: Commitments FY02 - FY08 (YDDC monthly reports prior to FY02)

Note: It is important to distinguish these commitment values reflect admission dates to a CYFD facility, as opposed to total referrals resulting in commitments.

In fiscal year 2008, facility commitments were the highest in four years and were nearly 28 percent over the previous year's commitment total. Recent forecasts have indicated growth in commitments, despite US Census predictions of a shrinking New Mexico juvenile population.

Notwithstanding the recent jump in commitments, the past decade has seen a significant downward trend in juvenile commitments with year-to-year reductions in nearly every year. FY07 commitments were the lowest on record with only 209 commitments. The major policy influences fueling the decline in commitments are likely related to the following efforts:

- Impact of Detention Reform in collaboration with Casey Foundation
- Adoption of classification tool to assist in commitment decisions
- Expansion of Children's Behavioral Health Services through Medicaid
- Restorative Justice Initiative in 1996
- Resulting increase in JPPOs
- Drug Courts
- Available community resources



Commitment Trends by Region/District/County

Region	District	County	Fiscal Year								% Change (FY06/FY08)	% Change (FY08/FY07)	% Change (FY07/FY08)
			2002	2003	2004	2005	2006	2007	2008				
1	11	McKinley	8	10	1	1	2	5	1	100.0%	150.0%	-80.0%	
		San Juan	70	36	34	25	20	20	19	-20.0%	0.0%	0.0%	
	13	Cibola	2	7	1	5	2	1	0	-60.0%	-50.0%	-100.0%	
		Sandoval	10	14	10	17	20	11	6	17.6%	-45.0%	-45.5%	
2	1	Valencia	17	5	3	6	6	2	8	0.0%	-66.7%	300.0%	
		Los Alamos	1	2	0	0	0	0	0	0.0%	0.0%	0.0%	
		Rio Arriba	6	5	5	0	1	5	6	0.0%	400.0%	20.0%	
	4	Santa Fe	7	8	16	8	12	11	16	50.0%	-8.3%	45.5%	
		Guadalupe	3	0	1	0	1	0	0	0.0%	-100.0%	0.0%	
		Mora	0	0	1	0	0	0	0	0.0%	0.0%	0.0%	
	8	San Miguel	21	13	7	2	4	6	11	100.0%	50.0%	83.3%	
		Colfax	12	8	3	11	7	3	5	-36.4%	-57.1%	66.7%	
		Taos	5	0	6	0	2	3	6	0.0%	50.0%	100.0%	
	3	2	Union	1	0	0	0	2	3	0.0%	50.0%	-100.0%	
Bernalillo			162	126	74	73	78	61	63	6.9%	-21.8%	1.6%	
4	5	Lea	11	15	18	21	19	12	10	-9.5%	-36.8%	-16.7%	
	9	Curry	16	10	11	11	12	8	26	9.1%	-33.3%	225.0%	
	10	Roosevelt	4	6	4	3	5	3	5	66.7%	-40.0%	66.7%	
		Quay	4	4	0	1	0	0	2	-100.0%	0.0%	0.0%	
6	14	Chaves	13	8	3	10	14	18	15	40.0%	28.6%	-16.7%	
		Eddy	12	19	18	9	12	7	10	33.3%	-41.7%	42.9%	
5	3	Doña Ana	23	24	29	23	11	12	15	-52.2%	9.1%	25.0%	
	6	Grant	8	6	2	1	4	2	0	300.0%	-50.0%	-100.0%	
		Hidalgo	2	3	1	0	3	0	0	0.0%	-100.0%	0.0%	
		Luna	16	6	6	7	4	3	4	-42.9%	-25.0%	33.3%	
	7	Catron	0	0	0	0	1	0	0	0.0%	-100.0%	0.0%	
		Sierra	10	3	0	0	1	1	1	0.0%	0.0%	0.0%	
		Socorro	1	0	2	5	4	1	3	-20.0%	-75.0%	200.0%	
		Torrance	4	5	7	7	3	1	5	-57.1%	-66.7%	400.0%	
12	Lincoln	5	7	6	3	3	3	12	0.0%	0.0%	300.0%		
	Otero	17	13	11	7	6	7	18	-14.3%	16.7%	157.1%		
Year to Date			471	383	280	268	269	209	287	1.2%	-19.3%	27.8%	

CYFD Juvenile Justice Services – Commitments by County (Source: Commitments FY02 – FY08)

Facility Commitment/Admission Arrival Times

FY08 Term Commitment Arrival Times						
Time of Day	Mon	Tue	Wed	Thu	Fri	Grand Total
7:00 AM					1	1
8:00 AM	2	7	2	3	1	15
9:00 AM	3	7	11	7	7	35
10:00 AM	2	2	8	3	13	28
11:00 AM	5	5	10	10	16	46
12:00 PM	1	9	13	12	14	49
1:00 PM	7	7	7	4	7	32
2:00 PM	3	4	9	6	3	25
3:00 PM	2	2	2	2	2	10
4:00 PM	1	8				9
5:00 PM	2	1	2	1	1	7
6:00 PM			1	1		2
7:00 PM				2	2	4
8:00 PM				1		1
9:00 PM						
10:00 PM						
11:00 PM			1	1	1	3
12:00 AM						
1:00 AM						
Grand Total	28	52	66	53	68	267



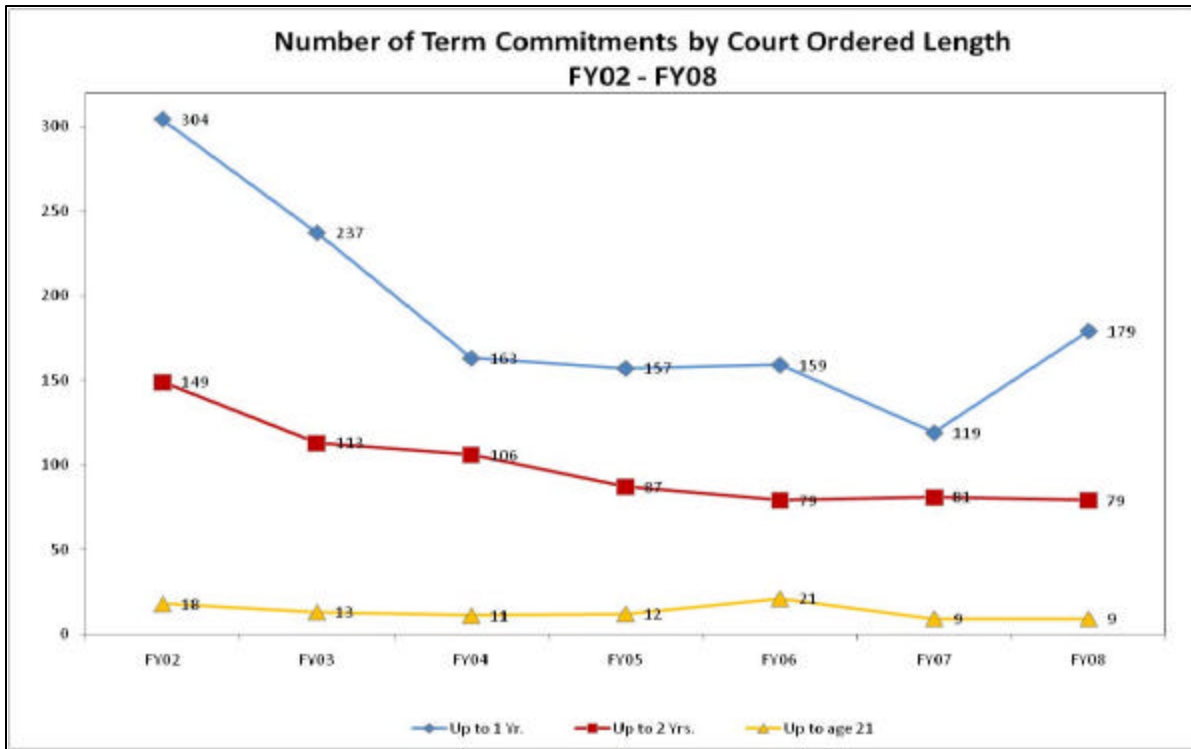
15-Day Diagnostic Evaluations by Region/District/County

Region	District	County	Fiscal Year			% Change (FY06/FY07)	% Change (FY07/FY08)
			2006	2007	2008		
1	11	McKinley	5	4	1	-20.00%	-75.00%
		San Juan	17	18	3	5.88%	-83.33%
	13	Cibola	9	2	0	-77.78%	-100.00%
		Sandoval	29	20	18	-31.03%	-10.00%
2	1	Valencia	5	4	1	-20.00%	-75.00%
		Los Alamos	0	0	0	0.00%	0.00%
		Rio Arriba	4	4	1	0.00%	-75.00%
	4	Santa Fe	9	5	7	-44.44%	40.00%
		Guadalupe	0	0	0	0.00%	0.00%
		Mora	0	0	0	0.00%	0.00%
	8	San Miguel	3	8	5	166.67%	-37.50%
		Colfax	1	7	8	600.00%	14.29%
		Taos	4	2	4	-50.00%	100.00%
	3	2	Union	2	5	1	150.00%
Bernalillo			26	18	19	-30.77%	5.56%
4	5	Lea	11	1	1	-90.91%	0.00%
	9	Curry	28	10	17	-64.29%	70.00%
		Roosevelt	6	1	9	-83.33%	800.00%
	10	Quay	0	0	6	0.00%	0.00%
	14	Chaves	22	9	13	-59.09%	44.44%
Eddy		11	14	16	27.27%	14.29%	
5	3	Dona Ana	4	1	7	-75.00%	600.00%
		Grant	2	3	7	50.00%	133.33%
	6	Hidalgo	3	1	1	-66.67%	0.00%
		Luna	2	3	6	50.00%	100.00%
		Catron	0	1	0	100.00%	-100.00%
	7	Sierra	9	2	1	-77.78%	-50.00%
		Socorro	13	13	6	0.00%	-53.85%
		Torrance	10	10	5	0.00%	-50.00%
	12	Lincoln	2	5	13	150.00%	160.00%
		Otero	16	13	12	-18.75%	-7.69%
Year to Date			253	184	188	-27.27%	2.17%

Facility 15-Day Diagnostic Arrival Times

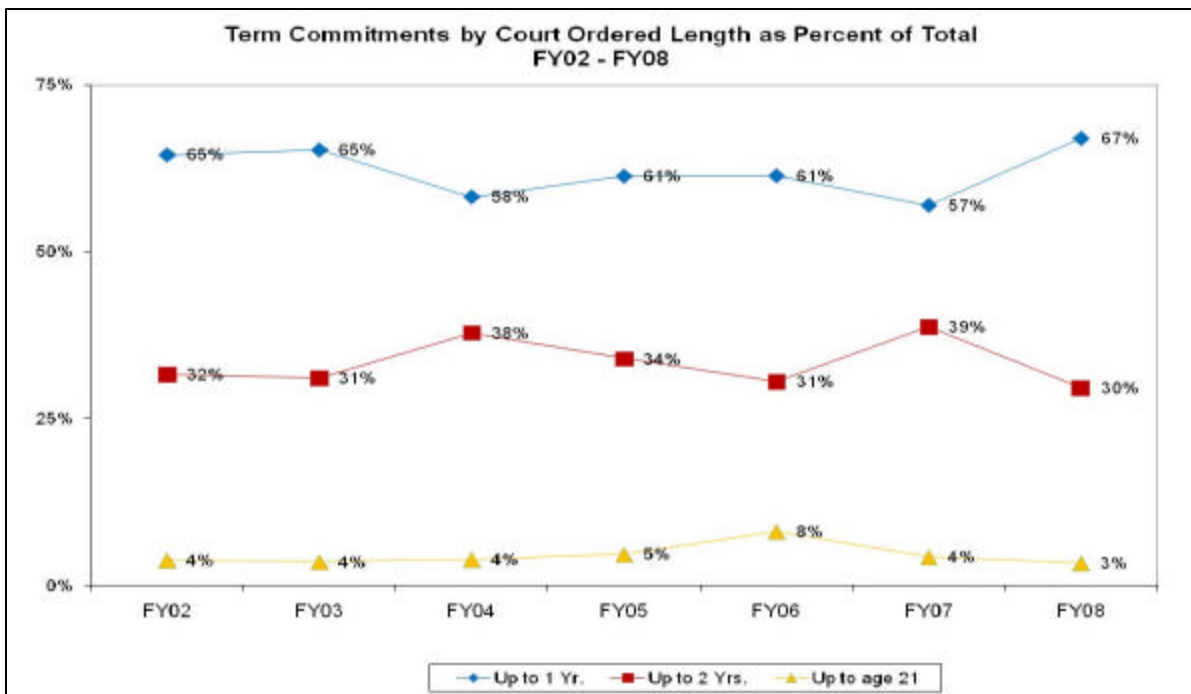
FY08 Diagnostics Arrival Times							
Time of Day	Mon	Tue	Wed	Thu	Fri	Sat	Grand Total
7:00 AM			1				1
8:00 AM		1			1		2
9:00 AM	1	2	9	3	3		18
10:00 AM	1	2	8	7	5		23
11:00 AM	1	5	7	5	8		26
12:00 PM	10	3	5	4	5	1	28
1:00 PM	1	9	7	10	2	2	31
2:00 PM	3	2	1	4			10
3:00 PM	3	7	1	3	1		15
4:00 PM	2	3	4		2		11
5:00 PM	2	3	1	4	3		13
6:00 PM		2	1	1	1		5
7:00 PM				2	2		4
8:00 PM							
9:00 PM			1				1
10:00 PM							
11:00 PM							
12:00 AM							
1:00 AM							
Grand Total	24	39	46	43	33	3	188

FY02-FY08 Commitments by Length



Source: Commitments FY02 – FY08

The numbers of two-year and up-to-age-21 commitments were essentially unchanged from the previous year, but one-year commitments rose by 50 percent, or by 60 juvenile commitments.

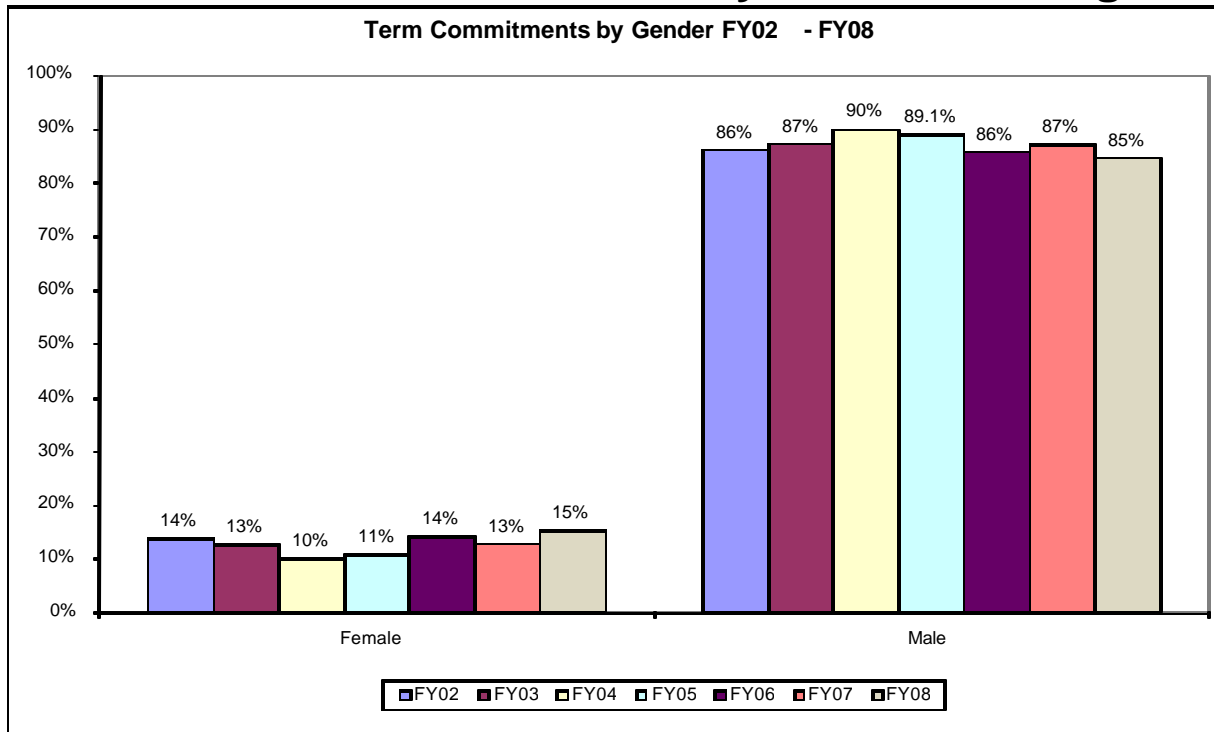


Source: Commitments FY02 – FY08

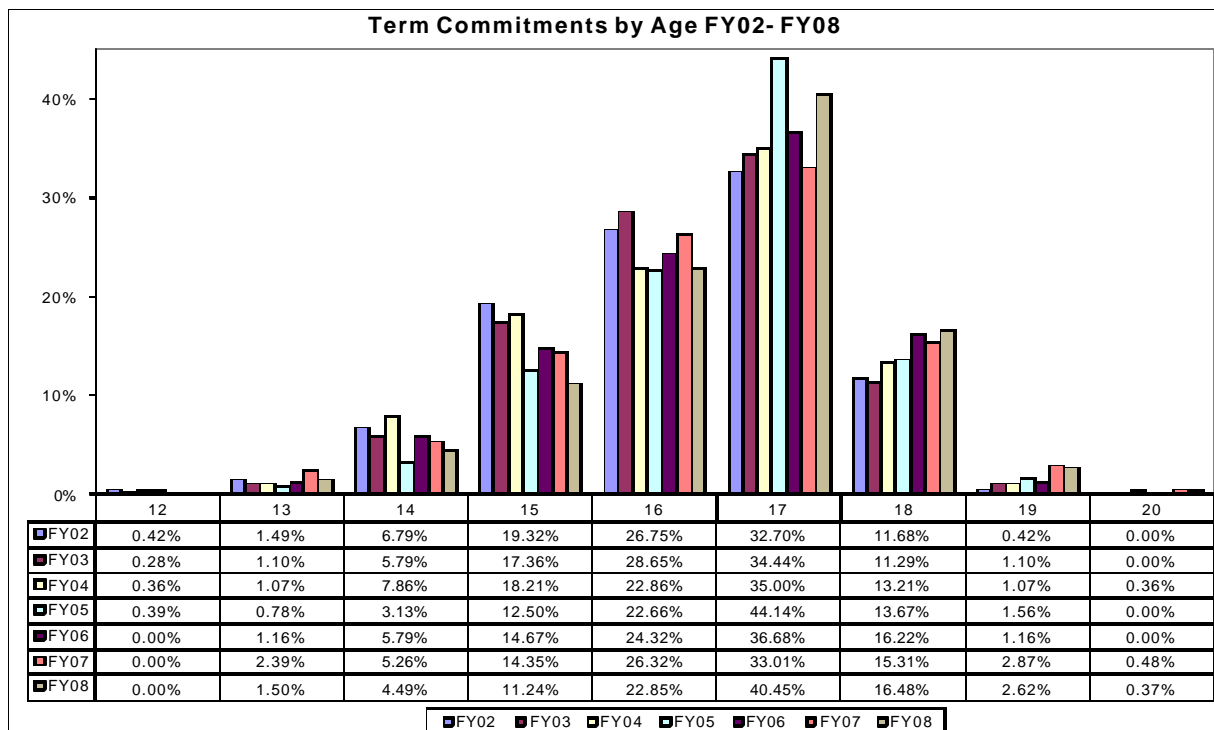
Given the jump in the number of one-year commitments in FY08, the distribution in terms of commitment length has shifted slightly.



FY02-FY08 Commitments by Gender and Age



Source: Commitments FY02 – FY08



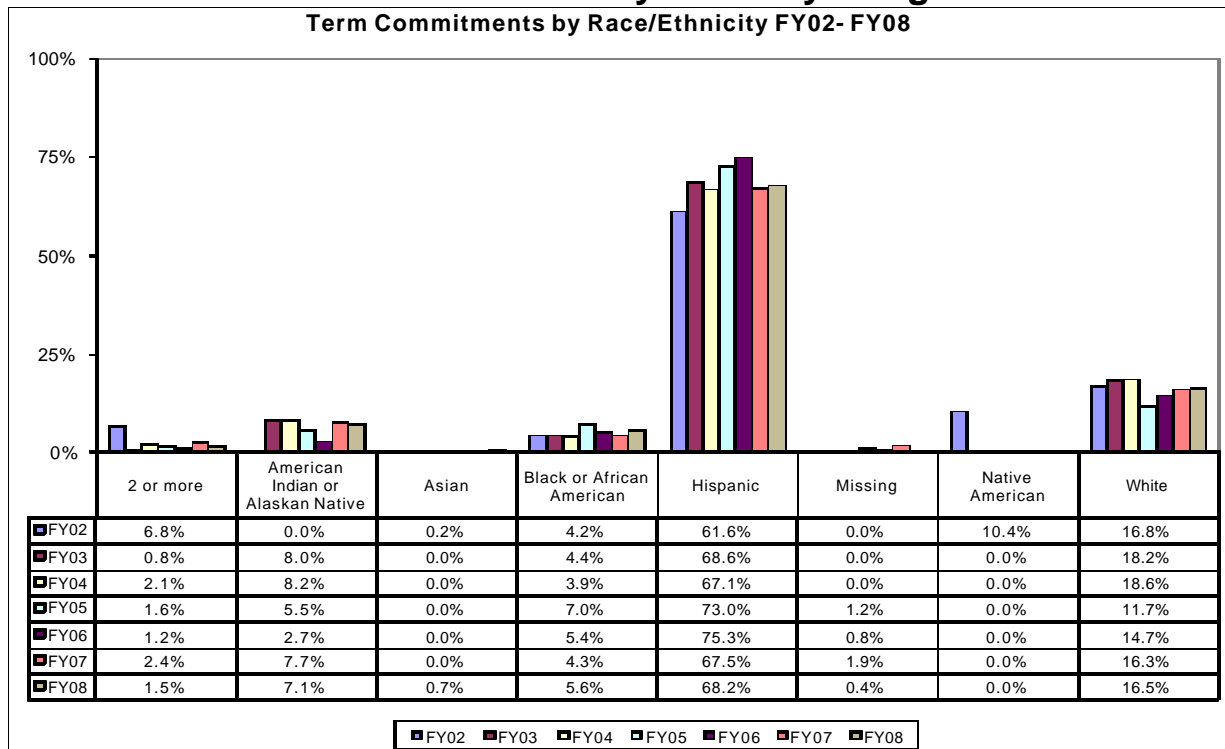
Source: Commitments FY02 – FY08

Average Age of Committed Client, FY02 - FY08

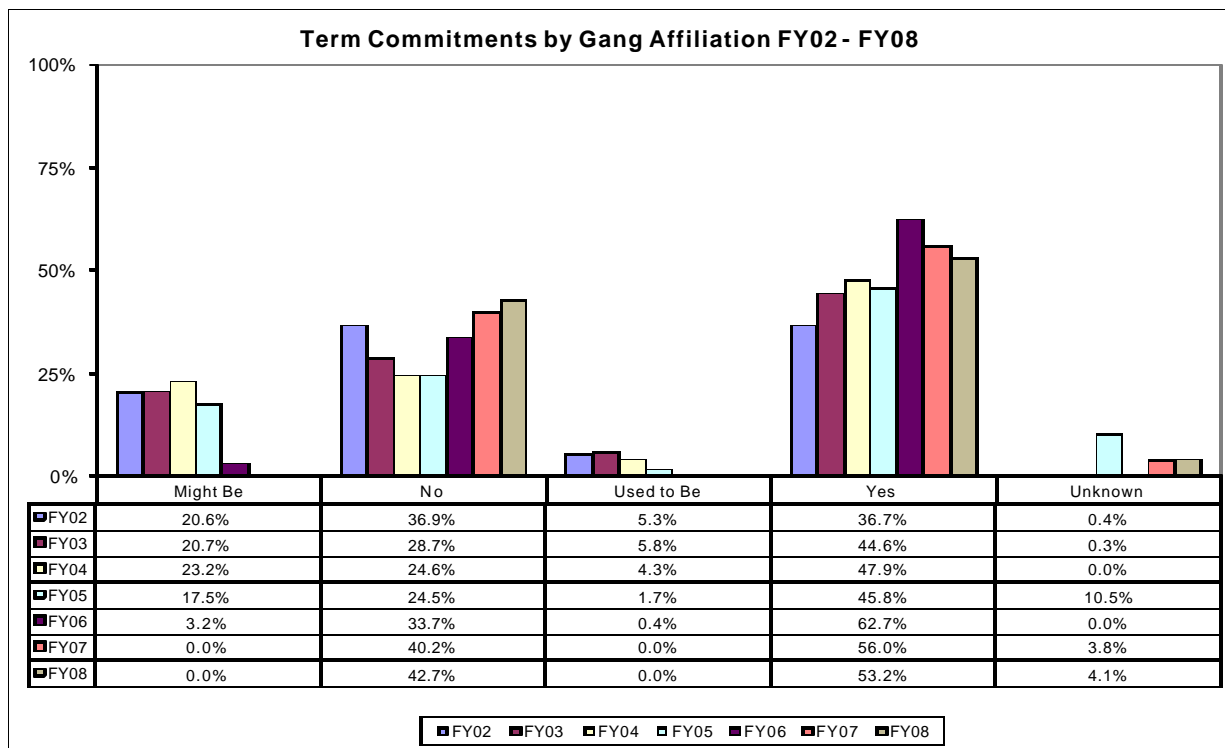
FY02	FY03	FY04	FY05	FY06	FY07	FY08
16.2	16.3	16.3	16.5	16.4	16.9	16.6



FY02-FY08 Commitments by Ethnicity/Gang Affiliation



Source: Commitments FY02 – FY08

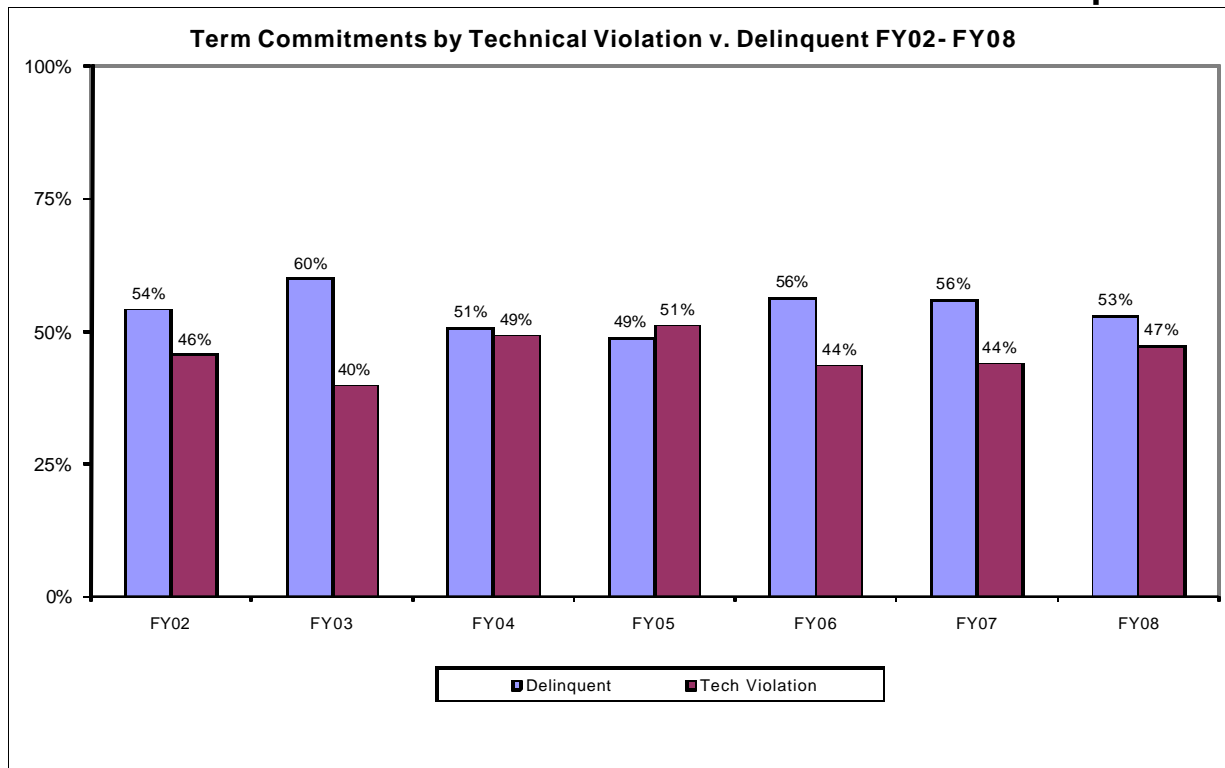


Source: JJS Central Intake Database

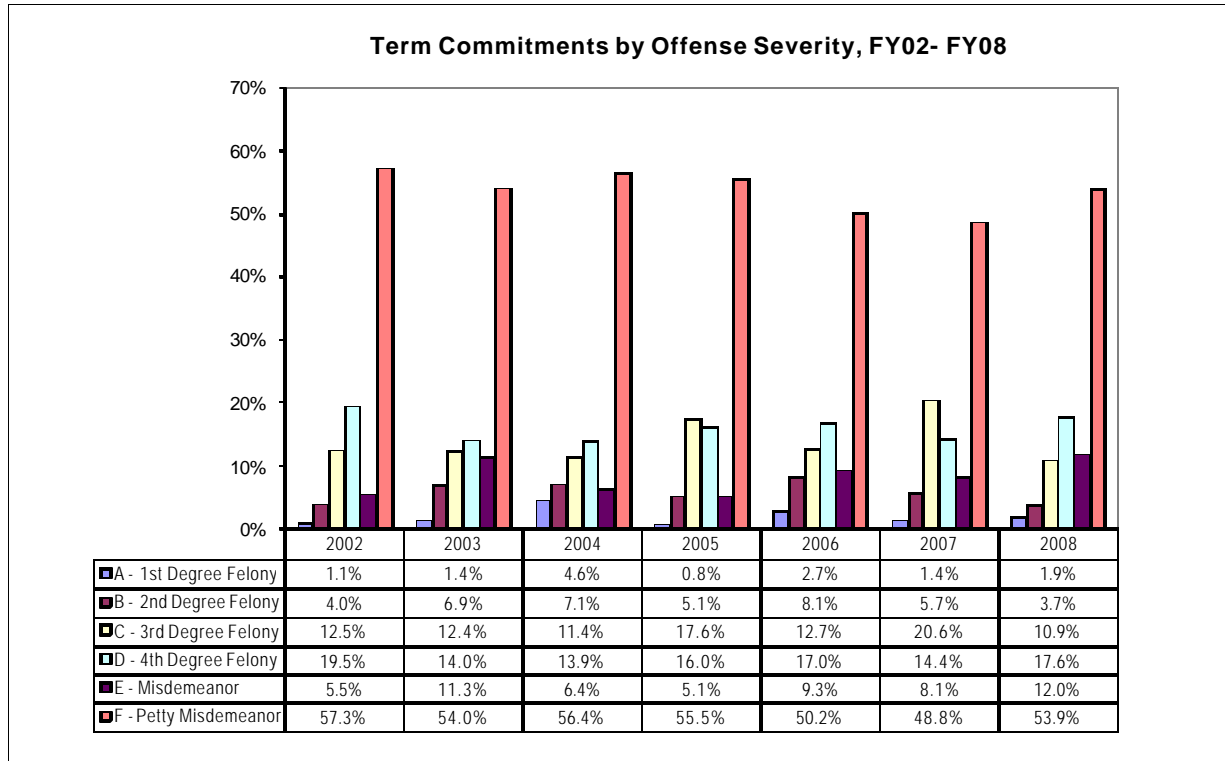
Note: Gang affiliation data based on reports from clients and others, and cannot be verified.



FY02-FY08 Commitments – Technical Violation vs. Delinquent



Source: Commitments FY02 – FY08



Source: Commitments FY02 – FY08



FY08 SDM Risk Level of Committed Clients

FY08	High		Medium		Low		Missing		Total	
	#	%	#	%	#	%	#	%	#	%
Class A	1	0.4%	4	1.5%		0.0%		0.0%	5	1.9%
Class B	4	1.5%	4	1.5%	1	0.4%	1	0.4%	10	3.7%
Class C	25	9.4%	3	1.1%	1	0.4%		0.0%	29	10.9%
Class D	40	15.0%	2	0.7%	2	0.7%	3	1.1%	47	17.6%
Class E	25	9.4%	4	1.5%		0.0%	3	1.1%	32	12.0%
Class F	141	52.8%	1	0.4%		0.0%	2	0.7%	144	53.9%
Total	236	88.4%	18	6.7%	4	1.5%	9	3.4%	267	100.0%

Source: FY02 – FY08 Commitments Updated

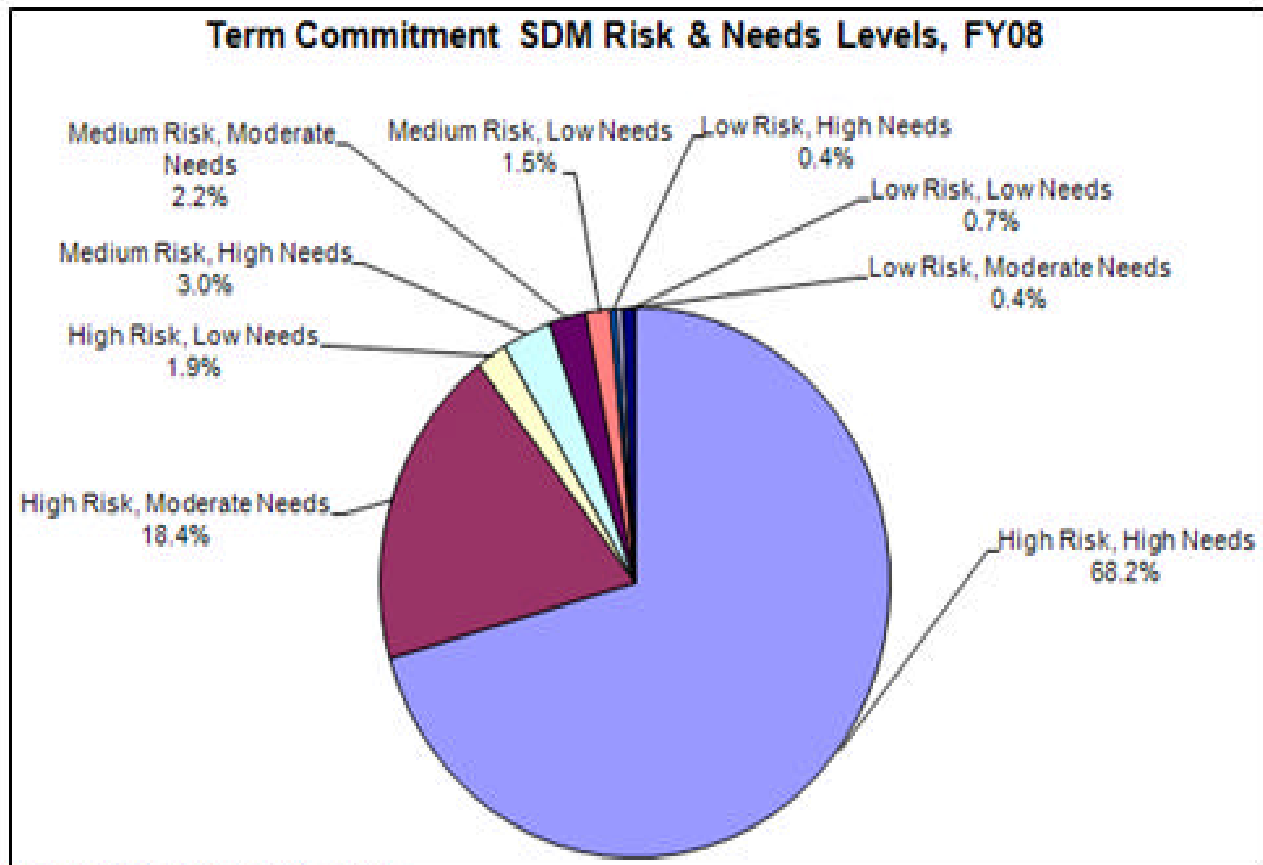
NOTE: Shaded cells indicate a commitment recommendation per SDM instrument.

- Class A – 1st Degree Felony
- Class B – 2nd Degree Felony
- Class C – 3rd Degree Felony
- Class D – 4th Degree Felony
- Class E – High Misdemeanor
- Class F – Petty Misdemeanor

Legend:

- Commitment
- Commitment or Community Supervision

Risk and Needs Scores of Committed Clients at Admission



Source: Commitments FY02 – FY08

Term Commitment SDM Risk & Needs Levels, FY02 - FY08							
	FY02	FY03	FY04	FY05	FY06	FY07	FY08
High Risk, High Needs	39.1%	46.2%	49.3%	78.0%	73.6%	73.7%	68.2%
High Risk, Moderate Needs	9.6%	10.7%	7.8%	13.3%	17.4%	7.2%	18.4%
High Risk, Low Needs	0.6%	0.3%	0.0%	1.2%	0.0%	1.0%	1.9%
Medium Risk, High Needs	29.1%	28.8%	28.9%	4.3%	5.0%	6.7%	3.0%
Medium Risk, Moderate Needs	11.9%	13.6%	8.9%	2.4%	2.7%	2.4%	2.2%
Medium Risk, Low Needs	0.6%	0.0%	0.0%	0.8%	0.8%	1.0%	1.5%
Low Risk, High Needs	4.7%	1.4%	3.3%	0.0%	0.0%	0.0%	0.4%
Low Risk, Moderate Needs	3.8%	1.2%	1.5%	0.0%	0.0%	0.5%	0.4%
Low Risk, Low Needs	0.6%	0.0%	0.4%	0.0%	0.4%	0.0%	0.7%

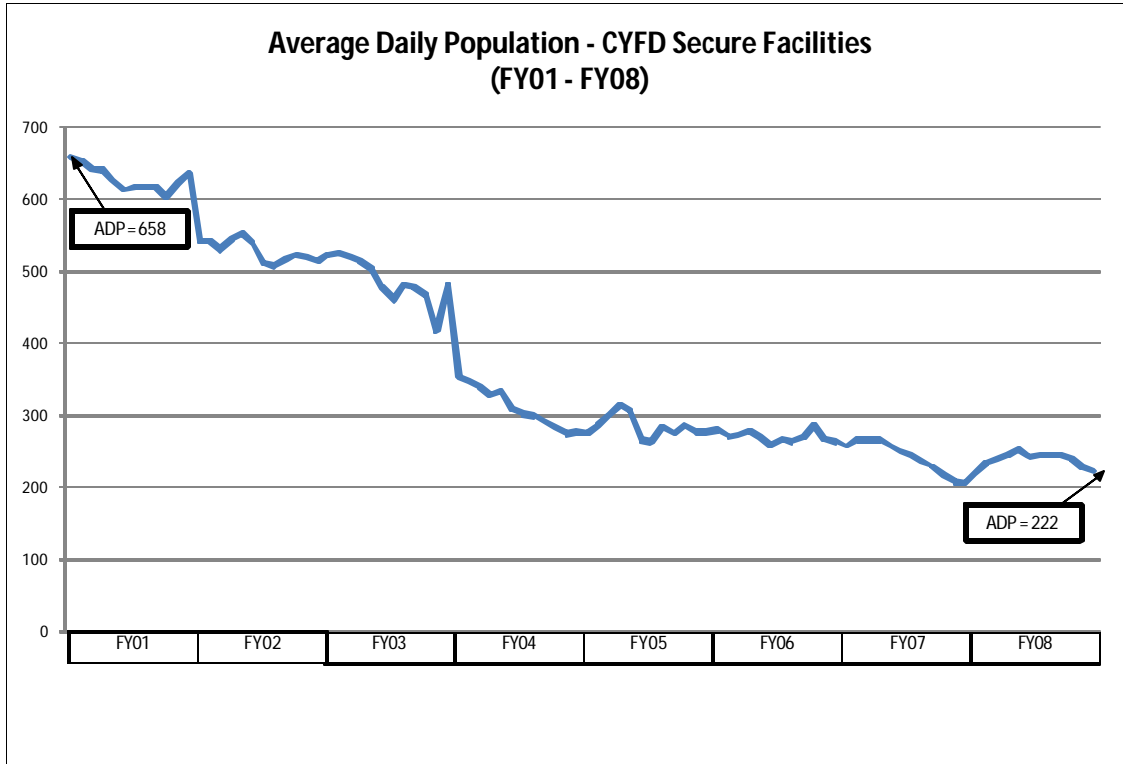
Source: Commitments FY02 – FY08

Note: The revalidated SDM tool went into effect in July 2004. This may account for the differences between FY04 and FY05.

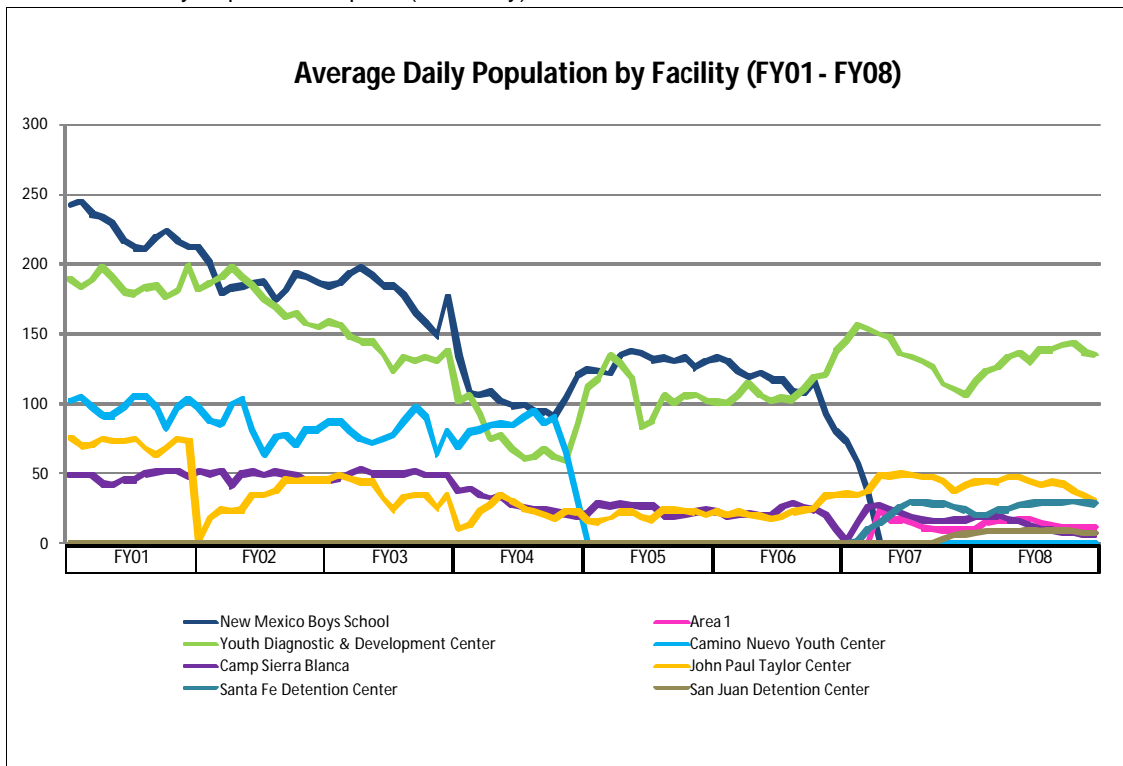


Average Daily Facility Population

In the chart below one can see the almost linear decline in population from FY01-FY08.



Source: JJS Daily Population Reports (Summary)



Source: JJS Daily Population Reports (Summary)



Average Daily Facility Population and Facility Profiles

	CSB		NMBS		Area 1		YDDC		CNYC		JPTC		SFDC		SJDC		ABC		ADP	
	N	%Δ	N	%Δ	N	%Δ	N	%Δ	N	%Δ	N	%Δ	N	%Δ	N	%Δ	N	%Δ	N	%Δ
FY02	49		188		0		176		84		32		0		0		--		529	
FY03	50	2%	179	-5%	0		140	-21%	81	-3%	37	18%	0		0		--		487	-8%
FY04	29	-42%	105	-41%	0		76	-46%	79	-3%	22	-40%	0		0		--		311	-36%
FY05	25	-14%	130	24%	0		109	42%	0	-100%	20	-10%	0		0		--		284	-9%
FY06	22	-12%	114	-12%	0		110	2%	0		24	17%	0		0		--		270	-5%
FY07	18	-16%	14	-88%	10		134	21%	0		44	88%	20		1		--		241	-11%
FY08	13	-30%	0	-100%	14	35%	133	0%	0		42	-4%	26	34%	9	538%	1		238	-2%
%Δ (FY02 - FY08)		-74%		-100%		--		-24%		-100%		32%		--	--	--	--			-68%

Note: ABC transitioned from a juvenile reintegration center to a secure facility on June 17, 2008. The juvenile reintegration center population is not shown here.

- CSB = Camp Sierra Blanca
- NMBS = New Mexico Boys' School
- YDDC = Youth Diagnostic & Development Center
- CNYC = Camino Nuevo Youth Center
- JPTC = John Paul Taylor Center
- SFDC = Santa Fe Detention Center
- SJDC = San Juan Detention Center
- ABC = Albuquerque Boys' Center
- ADP = Average Daily Population

SELECTED FACILITY PROFILES							
Information Current as of December 2008							
	Area 1	ABC ^(a)	CNYC	JPTC	NMBS	SJDC	YDDC
Capacity	20	12	60	48	22	10	147
In-House Population (6/30/2008)	10	10	0	28	24	7	108
FY07 ADP ^(b)	10	3	0	44	26	1	108
FY08 ADP	14	9	0	42	23	9	110
FY08 Op Budget	\$1,705,700	\$1,149,883	\$0	\$5,020,500	.. ^(c)	-	\$121,85,400
FY08 Professional Services Contracts	\$5,000	\$16,000	\$0	\$50,000	.. ^(c)	\$843,200	\$25,000
Security Level	Low to Medium	Low to Medium	Low to High	Low to High	Low to High	Low to High	Low to High
Population Profiles	Males Transferred from another JJS facility	Committed Males received directly from Central Intake, or referred for transfer from a facility by MDT team	Males and Females, Mental Health, High Risk	Males Up To 20 Years Old, Low-Escape Risk, Community Program, Limited to Non-Wheel Chair Disability	Females, General Population, Mental Health, High Risk, Central Intake of Clients & Diagnostic Evaluation	Males 14-18 years old (clients 19-21 are reviewed on a case by case basis). Clients reside in San Juan County or Northern NM region only	Males, Mental Health, High Risk, Central Intake of Clients, Diagnostic Evaluation, Sex Offender Program

- (a) Albuquerque Boys' Center was reclassified from a juvenile reintegration center to a secure facility on June 17, 2008
- (b) Out-of-house population was not counted separately until February 8, 2007
- (c) The budget amounts listed for YDDC are the total for both YDDC and the NMBS



Facility Programs & Services Matrix

Services	Area 1	ABC	CNYC	JPTC	SJDC	YDDC
Education						
At-Risk Student Dropout Prevention					v	
Library Services		v	v	v	v	v
Life Skills	v	v			v	
Post Secondary	v	v	v	v	v	v
Pre-GED and GED Testing		v	v	v	v	v
Secondary	v	v	v	v	v	v
Vocational		v	v			v
Other ^(a)		v	v	v	v	v
Behavioral Health						
Behavior Management	v	v	v	v	v	v
Cambiar				v		
Family		v		v	v	
Group	v	v	v	v	v	v
Individual	v	v	v	v	v	v
PB&J/Grad Dads/Young Fathers	v	v	v			v
Parenting Classes				v		
Sex Offender Treatment			v			v
Substance Abuse Program	v	v	v	v	v	v
Other ^(b)	v	v	v	v	v	
Cultural/Spiritual						
Faith Based Participation	v	v	v	v	v	v
Sweat Lodge	v	v	v		v	v
Other ^(c)		v	v		v	v
Work/Service Programming						
Community Service/Work Programs	v	v		v		v
Adopt-a-Median				v		
Habitat for Humanity				v		
Greenhouse				v		
Sports/Recreational Programming						
Recreational Programs	v	v	v	v	v	v
Horticulture					v	
Intramural Sports	v	v	v			v
Weekly Reward Activity			v			v
Music					v	v
Special Events/Holiday Sports Tournaments	v			v		
New Mexico Athletic Association			v			
Medical Services						
Psychotropic Management Plan	v	v	v	v	v	v
Physician/Nurse Practitioner	v	v	v	v	v	v
Medication Administration	v	v	v	v	v	v
Nursing Coverage	v	v	v	v	v	v
Dental Services	v	v	v	v	v	v
Dental Hygiene	v	v	v	v	v	v
Optometry Services	v	v	v	v	v	v
Laboratory Services	v	v	v	v	v	v
Community Providers	v	v	v	v	v	v
Other						
Gender Specific Programs	v	v	v	v		v
Other ^(d)		v	v	v	v	v

Source: FACTS Facility Production Queries

(a) Other educational services may include the following: 15-Day Educational Services, ACT Testing, Accuplacer Testing, Boys and Girls Dance, Central Intake Educational Services, Community Tutors, Driver's Education, Educational Diagnostic Testing at Intake and Discharge, English as a Second Language (ESL), Hearing Screenings, Graduate Teaching Assistants, New Mexico Activities



Association (NMAA), New student transition and orientation services, Parent-Teacher Association, Peer Tutoring, Placement testing for post-secondary, Plato Learning System, Research-Based Reading Intervention Program (Read 180), Research-Based Mathematics Intervention (Accelerated Math), School Newspaper, School-wide Guided Reading, Self-Advocacy Skills, Short-cycle assessments- reading, Short-cycle assessments- math, Special Education, Special Education Diagnostic Testing, State-Mandated Testing, Student Assistance Team, Student Council, Student IDs, Student progress reports and report cards, Young Dads Reading Program

(b) Other behavioral health services may include Art Therapy, Alcoholics Anonymous, Anger Management, Community Group, Dialectical Behavior Therapy, Family Visitation, Phoenix Curriculum, Psycho-Educational Classes, Resiliency/Emotional Intelligence, and Teaching Tolerance Curriculum

(c) Other Cultural/Spiritual Services include Culture of Poverty, Drumming (Native Boys'), Media Arts (Native Boys'), Religion Through Art, Religious Concerts, First Holy Communion

(d) Other programs may include Arts and Crafts Program, Art Class- Mural, Business Dinner, Career Readiness, Community Advisory Board, Creating Lasting Families, Current Events, Family Day, Family Night, Fresh Eyes Photography, Dance Choreography, Exploring Cultures, Girls' Circle, Men's Wellness, Mentor/Family/Community Members Holiday Banquet, Phoenix New Freedom, Photography Class, Poetry Workshop, Quarterly Dinners/Etiquette Program, Restorative Justice, Ropes Course, Summer Fun Day, Talking Circles, Tattoo Removal, Team Building, and Welding, Yoga



APPENDICES

Acronym List

ABC	Albuquerque Boys' Center	JJAC	Juvenile Justice Advisory Committee
AGRC	Albuquerque Girls' Reintegration Center	JJS	Juvenile Justice Services
ACA	American Correctional Association	JPTC	J. Paul Taylor Center
ADP	Average Daily Population	JPB	Juvenile Parole Board
BCJDC	Bernalillo County Juvenile Detention Center	JPPO	Juvenile Probation and Parole Officer
CCA	Children's Court Attorney	JRC	Juvenile Reintegration Center
CCRF	Carlsbad Community Reintegration Center	LCC	Luna Community College
CFARS	Children's Functional Assessment Rating Scale	LPRC	La Placita Reintegration Center
CIU	Central Intake Unit	MCO	Managed Care Organizations
CNYC	Camp Nuevo Youth Center	MDT	Multi-Disciplinary Team
CPS	Child Protective Services	MOU	Memo of Understanding
CSB	Camp Sierra Blanca	MST	Multi-Systemic Therapy
CSO	Community Support Officer	NCCD	National Council on Crime and Delinquency
CSW	Clinical Social Worker	NMBS	New Mexico Boys' School
CYFD	Children, Youth and Families Department	NMGS	New Mexico Girls' School
DOC	Department of Corrections	OJJDP	Office of Juvenile Justice and Delinquency Prevention
ENRC	Eagle Nest Reintegration Center	PBB	Performance-Based Budgeting
FACTS	Family Automated Client Tracking System	PI	Preliminary Inquiry
FINS	Families in Need of Supervision	RJCC	Restorative Justice Community Circles
FFT	Functional Family Therapy	SDE	State Department of Education
FS	Family Services	SDM	Structured Decision Making
FTE	Full-Time Employee	SFJDC	Santa Fe Juvenile Detention Center
GED	General Education Diploma	SJJDC	San Juan Juvenile Detention Center
HIPAA	Health Insurance Portability Act	TABE	Test of Adult Basic Education
ICJ	Interstate Compact on Juveniles	TCM	Targeted Case Management
ISS	Intensive Specialized Supervision	TDM	Team Decision Making
JCC	Juvenile Community Corrections	YDDC	Youth Diagnostic and Development Center
JCO	Juvenile Corrections Officer	YFS	Youth and Family Services
JDAI	Juvenile Detention Alternative Initiative		
JIPS	Juvenile Intensive Probation Supervision		



Common Definitions

Term	Description
Administrative Discharge	The release of a client not on parole from the commitment to and custody of CYFD at the conclusion of the period of commitment and custody specified the endorsed order of disposition by the committing Court.
Affidavit for Arrest	A signed and notarized affidavit by a JPPO or law enforcement officer in the form stating the reasons a juvenile has committed a delinquent act or violated a term of probation required by the New Mexico Supreme Court (NMRA 1999, 9-209 or 10-409) for the issuance of an Arrest Warrant (NMRA 1999, 9-210A or 10-410).
Amenability to Treatment Report	A report prepared by a licensed mental health provider on a client charged in the Delinquency Act petition as a youthful offender, for a disposition hearing (NMSA, 1978, § 32A-2-17(A)(3)).
Biopsychosocial Assessment	A report prepared by a CYFD CSW for a Plan of Care (POC), a Predisposition Report (PDR) or a Preliminary Inquiry (PI).
Clinical Assessment Unit (CAU)	Unit comprised of clinical social workers providing services to probation and parole clients.
Central Intake Unit (CIU)	Unit within Juvenile Justice Services designated by CYFD to receive, classify, and assign clients committed to the custody of CYFD.
Client Family Baseline Assessment (CFBA)	A report prepared for use after the disposition of a client's case and the transfer of custody to CYFD by an order of the court or the placement of a client on probation or under supervision by an order of the court.
Commitment Order	A court order committing an adjudicated juvenile to the custody of CYFD. The order frequently is titled Judgment and Disposition.
Community Supervision Level Matrix	A matrix for CYFD use to establish the level of supervision for a client based on the severity level of the offense and level of risk resulting from the SDM.
Conditional Release	JPPO supervises and monitors court-ordered conditions for a client who has been released from detention.
Consent Decree	A plea of no contest by the respondent to the allegations in the petition and an agreement to participate in a court ordered six month treatment plan with subsequent dismissal of the petition with prejudice.
Delinquent Referral	A referral to the juvenile justice system for a criminal act.
Dispositional Hearing	A court hearing held after the adjudicatory hearing which determines the consequence for a delinquent act under the Children's Code.
Endorsed Court Order	An order of the court, signed by the judge or stamped for signature of the judge and filed with the clerk of the court and bearing the stamp of the clerk of the court as a filed document.
Fifteen-Day Diagnostic Evaluation	An examination of an adjudicated juvenile transferred by order of the court to the Youth Diagnostic and Development Center (YDDC) for the purpose of diagnosis and evaluation of the juvenile to be presented at the disposition hearing.
Home Study Report	A report requested by a CYFD facility or ordered by the court to determine the suitability of a prospective placement for a client on probation.
Informal Conditions	Specific tasks, monitored by JPPOs, clients handled informally are required to complete. (A fight at school that results in an offense could involve completing mediation.)



Term	Description
Informal Supervision	JPPO supervises a client handled informally through contact with the client at least once each month. This client is more at risk of re-offending than a client on informal conditions and needs additional supervision.
Intensive and Specialized Services (ISS)	A system of targeted services and activities which address the needs and supervision requirements of clients who are at greatest risk of re-offending and whose behavior demonstrate a high risk to the community or themselves. The client may be supervised several times a day at an intense level. A Community Support Officer also makes contact with the client at least once per day, including weekends.
Intensive and Specialized Services (ISS) Includes: Juvenile Intensive Probation and Parole Services (JIPPS)	Targeted services and activities are designated to address the issues of community safety and the issues causing delinquent behavior through exacting supervision requirements for a client with the greatest risk of re-offending and with behavior demonstrating high risk to the community. JIPPS includes structured and intensive supervision, activities and services provided to a client and the client's family which address continuing delinquent behavior escalating in severity or frequency, or for a client demonstrating a pattern of noncompliance and the client exhibits limited benefit from the use of other, less structured services, with commitment of the client imminent.
Interstate Compact Parole	Interstate agreement in which a parole client from another state is supervised by one of our JPPO offices.
Interstate Compact Probation	Interstate agreement in which a probation client from another state is supervised by one of our JPPO officers.
Isolation Confinement	Confinement of a client to an individual cell/room, separated from the general population of a facility.
Isolation Confinement Unit	Housing for a client under secure confinement, separated from the general population of a facility
Juvenile Parole Retake Warrant	An administrative warrant issued by the Juvenile Services Director/designee to law enforcement or CYFD staff to detain and/or transport to a CYFD facility, a client on parole, after a preliminary parole revocation hearing has been conducted by CYFD.
Managed Care Organization (MCO)	Managed care organization includes HMO/BHO that provides integrated health care for Medicaid eligible clients.
Multi-Disciplinary Team (MDT)	The MDT, with the assistance and cooperation of medical services staff, psychological services staff and education staff, evaluate and assesses a client and the client's file in order to recommend the classification decision. The MDT uses the Facility Options Matrix to apply the information available from the court, the district office, the assessments and evaluations from medical services, psychological services and education services through the MDT to recommend a classification decision and the facility placement of a client.
Minimum Service Contact Standards	A matrix for use by CYFD employees to establish frequency and type of contact between the JPPO and the client on probation or other formal supervision.
Non-Delinquent Referral	A referral to the juvenile justice system for a noncriminal act that would be considered illegal only for juveniles.
Parole Revocation Hearing	A hearing conducted by the Juvenile Parole Board to determine the disposition of an alleged parole violation.



Term	Description
Parole	Supervision by JPPOs for clients that have been paroled from a juvenile facility by the Juvenile Parole Board.
Plan of Care (POC)	<p>The treatment and supervision plan of clients in the custody of or under the supervision of CYFD from entry into the system until release. The purpose of the Plan of Care is to</p> <ul style="list-style-type: none"> • provide focus and blueprint of recommended ways to address delinquency to the client and staff on the issues that brought the client into the system and what tasks the client needs to complete to be successfully discharged from the system; • guide client, parent/guardian/custodian and staff to focus on outcomes; • identify goals whose objectives provide for specific interventions for the client, parent/guardian/custodian, staff, and interested parties; • decrease the duplication of services by providers; • provide precise, measurable objectives to evaluate CYFD interventions; and • outline case manager activities. <p>Staff assesses local and statewide resources in preparing a POC, developing goals and action steps to assist the client and family address primary needs areas identified by the needs assessment, as well as, reducing the risk of re-offending. Programs and services are included. This is applicable for probation services and facility services. Each office maintains a list of state and local resources and providers, including the resource manual produced by Family Services. The Plan of Care delineates services and programs for the client based on the SDM, subject to availability of funds and access.</p>
Predisposition Report (PDR)	A written report ordered by the court, prepared by the JPPO after adjudication of a juvenile and submitted to the Court and counsel, for use at the disposition hearing.
Preliminary Inquiry (PI)	A decision making process for a decision by a JPPO required by the Delinquency Act of the Children’s Code (NMSA 1978, § 32A-2-7) and the Children’s Court Rules (NMRA 1999, 10-204) to determine the need for a petition of delinquency or other resolution of a charge or complaint alleging a delinquent act by a juvenile.
Probation Agreement and Order	An order of the court, including an agreement by the client, which places conditions and limitations on a client, and the client’s parent/guardian/custodian if made party to the case, for the period of time set forth in the order.
Probation/Parole Agreement	When a client is placed on informal or formal probation, the JPPO reviews the conditions of supervision with the client and parent/guardian/custodian, both of whom sign the agreement and are given copies. The signed agreement is indicative that the client and parent/guardian/custodian understand the conditions of supervision. The JPPO documents the review in the master file.
Probation	JPPO will supervise a client found to have committed a delinquent offense and ordered supervision by the court. The client may be supervised several times a day down to once a month. The court order may be a consent decree, judgment or Youthful Offender.
SDM	Staff utilizes the Structured Decision Making (SDM) tool to assess the client’s risk of re-offending and the areas of need. Staff assesses a client’s risks, including the risk of re-offending and the client and client’s family’s strengths and needs to formulate the Plan of Care (POC) for a client. The SDM is only completed when formal charges have been filed and the client has been adjudicated delinquent or admitted to one or more of the charges contained in the petition or consent decree.



Term	Description
Sex Offender Program	A program of structured and intensive supervision, activities and services for a client and the client's family to address illegal sexual behavior for which a client was adjudicated delinquent.
Supervision Plan	A term referring to the probation agreement and order, or the parole agreement, and the Plan of Care. The Supervision Plan for a client includes information obtained from the PDR, CFBA, SDM risk and needs assessments, and evaluations. The Probation/Parole Agreement and Plan of Care guide the client, parent/guardian/custodian, and staff in identifying the services that are needed for the client to successfully complete probation and/or parole. The JPPO develops the supervision plan focusing on the client's strength and needs with input from the client, parent/guardian/custodian, and significant others. The plan includes information gathered from Pre-Disposition Reports, Client Family Baseline Assessment, Risk and Needs Assessments, and evaluations.
Community Support Officer (CSO)	An employee who assists the JPPO by observing clients on probation or under supervision for compliance with the probation agreement and order or other court order of supervision.
Technical Violation	A violation of the conditions of probation that does not constitute a delinquent act.
Time Waiver	An agreement between the public defender and the District Attorney's Office that the client will not incur another referral for six months. The JPPO monitors any conditions associated with the agreement (e.g., community service or restitution).
Transitional Parole Officer (TPO)	The transitional probation/parole officer whose duties may include coordination of aftercare services for any client.
Violent Crime Index	Includes murder and non-negligent manslaughter, forcible rape, robbery, and aggravated assault.
Zero Tolerance	Language used in a Court order that allows no exceptions for violation of specified conditions of probation.